

WORTHINGTON CITY COUNCIL

AGENDA

**7:00 P.M. - Monday, February 14, 2011
City Hall Council Chambers**

- A. CALL TO ORDER**
- B. INTRODUCTIONS AND OPENING REMARKS**
- C. AGENDA ADDITIONS/CHANGES AND CLOSURE**
 - 1. Additions/Changes
 - 2. Closure
- D. CONSENT AGENDA**
 - 1. CITY COUNCIL MINUTES (WHITE)
 - a. City Council Minutes of Regular Meeting January 24, 2011
 - 2. MINUTES OF BOARDS AND COMMISSIONS (PINK)
 - a. Water & Light Commission Minutes of Regular Meeting February 7, 2011
 - b. Airport Advisory Board Minutes of February 3, 2011
 - c. Worthington Economic Development Authority Minutes of January 24, 2011
 - d. Park & Recreation Advisory Board Minutes of December 2, 2010
 - 3. CITY COUNCIL BUSINESS - ADMINISTRATION (WHITE)
 - Case Item
 - 1. Application for Exemption from Lawful Gambling Permit
- E. CITY COUNCIL BUSINESS - ADMINISTRATION (WHITE)**
 - Case Items

PLEASE NOTE: All utility expenditures are listed as 601,602,and 604, and are approved by the Water and Light Commission

3. Purchase of Parcels #31-3935-000 and #31-3936-000
4. Resolution of Commitment of Funds for 59 North Industrial and Commercial Park Intersection
5. District 518 Use Agreement for Joint Tennis Court Project
6. Remaining 2011 Rate Approvals for Prairie View Golf Links
7. 2011 Industrial Wastewater Facility Fund Budget

F. CITY COUNCIL BUSINESS - ENGINEERING (BLUE)

Case Items

1. Release Easement Interests in TH 60 Right-of-Way and Grant Temporary Easements

G. CITY COUNCIL BUSINESS - COMMUNITY/EC DEVELOPMENT (GRAY)

Case Items

1. Change of Zone Application (First Reading) - City of Worthington & Rickbeil's Inc.

H. COUNCIL COMMITTEE REPORTS

1. Mayor Oberloh
2. Alderman Ten Haken
3. Alderman Kuhle
4. Alderman Nelson
5. Alderman Wood
6. Alderman Woll

I. CITY ADMINISTRATOR REPORT

J. CLOSED SESSION - PERFORMANCE EVALUATION (CLOSED UNDER MINNESOTA STAT. § 13D.05, SUBD. 3.(A))

1. Motion to Close Meeting
2. Evaluation Discussion

3. Re-Open Meeting

K. ADJOURNMENT

**WORTHINGTON CITY COUNCIL
REGULAR MEETING, JANUARY 24, 2011**

The meeting was called to order at 7:00 p.m. in City Hall Council Chambers by Mayor Alan E. Oberloh with the following Aldermen present: Lyle Ten Haken, Mike Kuhle, Scott Nelson, Ron Wood, Mike Woll.

Staff present: Craig Clark, City Administrator; Dwayne Haffield, Director of Engineering; Brad Chapulis, Director of Community/Economic Development; Janice Oberloh, City Clerk.

Others present: Jacob Holck.

AGENDA APPROVED

The motion was made by Alderman Ten Haken, seconded by Alderman Kuhle and unanimously carried to approve the agenda as presented.

CONSENT AGENDA APPROVED

The motion was made by Alderman Ten Haken, seconded by Alderman Wood and unanimously carried to approve the consent agenda as follows:

- City Council Minutes of Regular Meeting January 10, 2011.
- Minutes of Boards and Commissions: Water and Light Commission Minutes of Regular Meeting January 10, 2011; Airport Advisory Board Minutes of January 4, 2011; Park and Recreation Advisory Board Minutes of January 6, 2011; Worthington Housing and Redevelopment Authority Board of Commissioners Minutes of November 16, 2010.
- Bills payable and totaling \$703,026.18 be ordered paid.

**WORTHINGTON REGIONAL ECONOMIC DEVELOPMENT CORPORATION (WREDC)
REQUEST FOR CITY SUPPORT OF 2011 BIOSCIENCE CONFERENCE APPROVED**

Council discussed a request from Glenn Thuringer of WREDC for City sponsorship in the amount of \$1,500 for the 2011 Bioscience Conference scheduled for April 7th and 8th, 2011. The 2011 budget does not include any funding for the conference, however, there is \$14,000 remaining in the Economic Development Authority levy from which the appropriation could be made. Craig Clark, City Administrator, noted it would need to be done through advertising, which is allowed by statutes, and would include attendance of four representatives from the City.

The motion was made by Alderman Nelson, seconded by Alderman Wood and unanimously carried to approve the participation through advertising of the 2011 Bioscience Conference in the amount of \$1,500.

**RESOLUTION NO. 3457 ADOPTED AUTHORIZING CREATION OF JOINT AIRPORT
ZONING BOARD**

Staff presented a resolution authorizing creation of a Joint Airport Zoning Board, which is one of the first steps in updating of the airport zoning ordinance as approved by Council at their December 27, 2010 regular meeting. The resolution also identifies the City's right to appoint two representatives to the Board. Appointments will be made at a future meeting and cannot be Council members.

The motion was made by Alderman Wood, seconded by Alderman Kuhle and unanimously carried to adopt the following resolution:

RESOLUTION NO. 3457

AUTHORIZING THE CREATION OF A JOINT AIRPORT ZONING BOARD

(Refer to Resolution File for complete copy of Resolution)

APPLICATION AUTHORIZED FOR 2011 MINNESOTA CITY PARTICIPATION PROGRAM

Staff was requesting Council authorization to submit an application for the Minnesota City Participation Program (MCP) offered through the Minnesota Housing Finance Agency (MHFA). Brad Chapulis, Director of Community/Economic Development, provided a usage summary of the MCP in previous years, noting the program does not require a local match or administration.

The motion was made by Alderman Woll, seconded by Alderman Kuhle and unanimously carried to authorize staff to submit an application for the 2011 MCP program.

RESOLUTION NO. 3458 ADOPTED APPROVING THE DECERTIFICATION OF TAX INCREMENT FINANCING DISTRICT NO. 4 (THOMPSON HOTEL) IN THE CITY OF WORTHINGTON, MINNESOTA

Council considered a resolution approving the decertification of TIF District No. 4, (Thompson Hotel) which is mandatory per State Statute to occur 25 years from the date the first increment is collected (1985). Brad Chapulis, Director of Community/Economic Development, noted the City provided \$165,000 through bond issuance toward the redevelopment expenditures of the Hotel, and in 2002 the TIF plan was amended to allow the City to recuperate as much as possible of the \$177,969 in bond payments it incurred while the Hotel property was in tax forfeiture status. To date, \$93,564 has been recovered.

The Worthington Economic Development Authority approved the decertification by adoption of Resolution No. 3456 EDAu at their meeting on January 24, 2011.

The motion was made by Alderman Wood, seconded by Alderman Ten Haken and unanimously carried to adopt the following resolution approving the decertification:

RESOLUTION NO. 3458

APPROVING THE DECERTIFICATION OF TAX INCREMENT FINANCING DISTRICT NO. 4 (THOMPSON HOTEL) IN THE CITY OF WORTHINGTON, MINNESOTA

(Refer to Resolution File for complete copy of Resolution)

AMENDMENT TO COOPERATIVE AGREEMENT WITH NEW CASTLE TOWNHOMES APPROVED

Staff presented an amendment to the cooperative agreement with the Southwest Minnesota Housing Partnership approved by Council in 2008 in support of a Small Cities Application for the New Castle Townhomes development. The agreement stated the City would sponsor/apply for the program funds for the project and the Partnership would be responsible for all costs related to the application and administer the grant at no cost, if awarded. In its annual project review, the MN Department of Employment and Economic Development (DEED) indicated that language regarding the compliance of all applicable laws and regulations provision in paragraph 8 of the agreement was not sufficient, and was requesting a language change to the following:

“At least 51% of the project units must be rented to low to moderate income households whose total income from all members does not exceed 80% of the current Area Median Income, adjusted for household size as published by the Department of Housing and Urban Development (HUD). Incomes must be verified by a third party. Rents on these units must also be affordable which is defined as the Fair Market Rate or Section 8 voucher “payment standard” for the number of bedrooms in each unit or a rent that will be affordable to households at 60% of area median, adjusted for household size.”

Brad Chapulis, Director of Community/Economic Development, noted the amendment has no impact on the project or the City of Worthington.

The motion was made by Alderman Woll, seconded by Alderman Wood and unanimously carried to approve the amendment to the Cooperative Agreement with Southwest Minnesota Housing Partnership for New Castle Townhomes.

COUNCIL COMMITTEE REPORTS

Mayor Oberloh - noted it was great that so many Councilmen were interested in attending the

CGMC's Legislative Action Day in St. Paul, but was concerned at the same time at having almost the entire Council go because of costs. He doesn't think the Legislators want to discuss projects this year but rather just the deficit.

Alderman Ten Haken - Discussed a letter done and sent out by the School Board Association - the deficit will hit us all the way around. Also mentioned discussion at a meeting about Common Cents Taxpayer Approach - only one citizen showed up along with several elected officials and the City Administrator. Very disappointing.

Alderman Kuhle - nothing to report.

Alderman Nelson - attended an Economic Development Ad Hoc Committee meeting with Alderman Kuhle - talked about "pillars" (education, transportation, bioscience, and retail). There is some talk of wanting to create a transportation committee, and additional talk about a community information officer, maybe a collaborative effort.

Alderman Wood - met with HRA and talked about security issues at the Atrium - a special committee will be meeting on that in February. Had an LEC and Dispatch meeting and basically said "thank you" and decided to go home. May still have three partners in this. Also commented on impact of state-wide public sector layoffs if LGA is cut - any savings would be reduced by unemployment, etc. He would rather see a 5% payroll cut across the board.

Alderman Woll - will be doing a punch list at the Auditorium on Wednesday - it looks terrific. Will be having a Health Insurance meeting this week. The first event at the Auditorium will be early April.

CITY ADMINISTRATOR'S REPORT

Craig Clark, City Administrator, noted most of what he had to report had already been talked about. Did note that since 2003 we've lost \$1.2 million in LGA, and provided an explanation of "certified LGA."

ADJOURNMENT

The motion was made by Alderman Ten Haken, seconded by Alderman Kuhle and unanimously carried to adjourn the meeting at 8:11 p.m.

Janice Oberloh
City Clerk

UNAPPROVED

**WATER AND LIGHT COMMISSION MINUTES
REGULAR MEETING
FEBRUARY 7, 2011**

The regular meeting of the Water and Light Commission was called to order in the Worthington Public Utilities Conference Room at 3:05 P.M., CST, by Vice-President Randy Thompson with the following members present: Randy Thompson, James Elsing and Ron Wood. Commissioner Demuth arrived at 3:10 p.m.

Staff members present were Scott Hain, General Manager; Deb Scheidt, Secretary to the Commission

Others present: None

AGENDA ADDITIONS/CLOSURE

A motion was made by Commissioner Wood, seconded by Commissioner Hoffmann and unanimously carried to close the agenda as presented.

WATER AND LIGHT COMMISSION MINUTES

A motion was made by Commissioner Elsing, seconded by Commissioner Hoffmann and unanimously carried to approve the Water and Light Commission minutes of the regular meeting held January 18, 2011.

LEWIS & CLARK PROJECT

Scott Hain, General Manager, provided the Commission with information on funding for the Lewis and Clark Regional Water System project.

SUBSTATION TIE TRANSMISSION PROJECT

Scott Hain, General Manager, provided the Commission with an update on the proposed substation tie transmission project.

HIGHWAY 60 STREET LIGHTING PROJECT

Scott Hain, General Manager, provided the Commission with an update on the Highway 60 street lighting project.

MUNICIPAL WASTEWATER PLANT DISCHARGE PERMIT REISSUANCE

Scott Hain, General Manager, provided the Commission with an update on the reissuance of the discharge permit for the municipal wastewater plant.

WORTHINGTON REGIONAL ECONOMIC DEVELOPMENT CORPORATION (WREDC) RESTRUCTURING

A brief discussion was held on the proposed restructuring of Worthington Regional Economic Development Corporation (WREDC) in an effort to improve private sector funding for WREDC.

MISSOURI RIVER ENERGY SERVICES MEMBER POLICY MAKERS SURVEY

Members of Missouri River Energy Services (MRES) have expressed an interest in opportunities for receiving more in depth information for their policy makers. In order to meet this request, Missouri River Energy Services provided a survey that member policy makers were asked to complete and return to MRES. Commission members each completed the survey which will be forwarded to MRES by utility staff.

WORTHINGTON AREA CHAMBER OF COMMERCE AND CONVENTION & VISITORS' BUREAU ANNUAL MEETING

The Worthington Area Chamber of Commerce and the Convention & Visitor's Bureau will hold their 80th annual meeting on February 18, 2011. A copy of the invitation was provided to Commission members. Commission members are invited to attend as Chamber of Commerce members through Worthington Public Utilities.

MINNESOTA MUNICIPAL UTILITIES ASSOCIATION WINTER LEGISLATIVE CONFERENCE

Minnesota Municipal Utilities Association (MMUA) will hold their Winter Legislative Conference on March 30 through April 1, 2011, in Bloomington, Minnesota. A copy of the tentative agenda was provided. Commission members were instructed to contact utility staff if interested in attending.

UTILITY BILLS PAYABLE

A motion was made by Commissioner Wood, seconded by Commissioner Hoffmann and unanimously carried to approve the utility bills payable totaling \$200,179.09 for January 21, January 28 and February 4, 2011.

ADJOURNMENT

A motion was made by Commissioner Thompson, seconded by Commissioner Hoffmann and unanimously carried to adjourn the meeting at 3:53 P.M., CST. President Demuth declared the meeting adjourned.

Deb A. Scheidt
Secretary to the Commission

**Airport Advisory Board
February 3, 2011**

The meeting was called to order at 7:00 a.m. by Rod Elsing at the Airport Terminal Building.

Members Present: Rolf Carlson (7:24 a.m.), Rod Elsing, Cameron Johnson, Mike Kuhle, Rod Sankey, Keith Wilson
Members Excused: Rich Lowe (excused)
Staff Present: Jim Laffrenzen, Director of Public Works; Julie Haack, Secretary
Others Present: Matt Wagner, Mead & Hunt

Airport Advisory Board Business

Approval of Minutes

Rod Sankey motioned to approve the minutes of the January 4, 2011, meeting. The motion was seconded by Keith Wilson and passed unanimously.

T-Hangar Presentation by Matt Wagner, Mead & Hunt

Matt Wagner presented four options for the proposed T-hangar. Possible locations were northwest of the existing hangars to continue the row or to begin a new row south of the existing hangars. A six unit nested hangar with storage on each end and a five unit hangar to include four nested hangars, two storage areas, and an end bay with 53 feet of clearance were the options for the hangar layout. Two options for a 60' x 60' hangar to accommodate Jim Arnt's spray plane were also presented.

The possible locations, the five bay or six bay options, and the option of a stand alone hangar were discussed. A five bay hangar located to the south of the existing hangars with immediate access to the taxi lane would be sufficient. The spray pad could be located across the taxi lane from the proposed hangar. Matt Wagner will develop a cost estimate for the five bay hangar located to the south of the existing hangars.

Rod Sankey motioned to approve the five bay hangar to be located south of the existing hangars and to move forward with the project provided the cost estimate is within budget. The motion was seconded by Rolf Carlson and passed unanimously.

Update on Fuel Project

Matt Wagner reviewed the status of the fuel project. A new solenoid had to be ordered and would soon be installed. The AV gas and Jet A fuel pumps should both be fully functional at the end of the day; however, the project would not be complete until site work and reseeding was

completed in the spring. The State will participate in the cost of \$15,367 for the extra work. Jim Laffrenzen explained that there was a meeting with Westmor, the contractor, regarding the cost of the extra work. It was agreed between City staff and Matt Wagner that it would be very difficult to prove whether pumping of the water well located a considerable distance from the tank install site would have had an impact. It was also agreed that since Westmor passed on the actual cost of the extra work, done at local wage rates not state wage rates, with no additional fees added, trying to negotiate a lower cost would be counter productive as Westmor could counter with a request for state wage rates.

FBO Request to Lease the Ohlsen Hangar

Cameron Johnson presented a request to lease the Ohlsen Hangar, which will be vacated upon completion of the new hangars, as part of the FBO Operating Lease Agreement. He is willing to make improvements as required by the Board in exchange for the lease. Jim Laffrenzen noted that the cost of demolishing the building would be about \$5000 of which \$2500 would be City share. The hangar would be an amendment to the agreement with Integrity and would become a negotiable item if Integrity no longer served as the FBO. The improvements would be need to completed prior to amending the lease.

Rolf Carlson motioned to approve the proposal which would allow the Ohlsen Hangar to be part of the FBO Operating Lease Agreement in exchange for work done on the hangar by the FBO to include door repair, painting, patching the roof, and building maintenance as needed to keep it in good looking condition. The motion was seconded by Mike Kuhle and passed unanimously.

Report on Airport Promotion and Marketing Meeting

Mike Kuhle reported on the Airport promotional meeting he attended along with Integrity, WREDC, the Chamber of Commerce, a representative from Headliners marketing, and others. He noted that WREDC and the Chamber will be including the airport promotional postcard in their packets and that the group will now meet quarterly.

Jim Laffrenzen and Cameron Johnson will meet with others at the Chamber on February 9 to discuss possible funding for airport promotion. It may be possible to pay for an ad in Midwest Flyer magazine with lodging tax dollars if a fly in packaged were developed that included an overnight stay.

Informational Item: Lease Rates for Old Hangars

Although the Airport Advisory Board recommended that the lease rate for old hangars remain at \$350 per year, City Council raised the rate to \$500 per year. Cameron Johnson has received complaints regarding the increase due to the quality of the hangars and that they are only usable in good weather. The sliding doors freeze closed during the winter due to the build up of snow and ice and it is not possible to use the hangars for about four months a year.

After discussion, Keith Wilson motioned to request that the City Council reduce the lease rates to \$350 per year. The motion was seconded by Rod Elsing and passed unanimously.

The request will be placed on a council agenda for their consideration. It was suggested that Cameron Johnson and Rod Elsing attend the council meeting to support the request.

Placement of Amelia Earhart Drive Signs

Rod Elsing has often mentioned that the terminal entrance drive should be called Amelia Earhart Drive because she vacationed in Worthington with her parents during the summers of 1907 through 1911. After discussion regarding placement of Amelia Earhart Drive signs on the drive or placement of a display and sign in the terminal, no action was taken on the item.

FBO Report

Cameron Johnson had nothing more to report.

Adjournment

As there was no other business before the Board, the meeting adjourned at 8:17 a.m.

Julie Haack
Secretary

City of Worthington
Park and Recreation Advisory Board Minutes
7:00 a.m. Tuesday, December 2, 2010

The meeting was called to order at 7:07 a.m. by Ryan McGaughey in City Hall Council Chambers.

Members present: Lynnette Faragher, Shawn Fritz, Ryan McGaughey, Mike Woll
Members absent: Sara Ricker (excused), Phil Benson (unexcused)
Staff present: Jim Laffrenzen, Scott Rosenberg, Julie Haack
Others present: None

Approval of Minutes

Lynnette Faragher motioned to approve the minutes of the September 28, 2010 meeting. The motion was seconded by Mike Woll and passed unanimously.

Establish 2011 Fees for Olson Campground, Park Shelters and Band Shell

Discuss Usage of Park Open Spaces

The proposed fee increases for Olson Campground were discussed. The fee increases range from .50 for Sites 13-63 to \$10.00 for monthly rent. A usage meter was used on a large camper to determine electric use during a stay. It was only about two dollars so it is not true that the larger campers consume a lot of electricity. It was noted that the tent sites are significantly down graded sites. Therefore, it was recommended not to increase the fee for tent sites.

Jim Laffrenzen stated that campground revenue was up significantly this year due to the number extended stays by contractors working on the wind generators and the school. The extended stays worked very well and did not detract from the family atmosphere. It was agreed extended stays shall be at the discretion of the campground attendant and Superintendent of Public Works, or Park Supervisor in the Superintendent's absence, and to eliminate the restrictions currently in place for long term camping.

No fee increase was proposed for the enclosed park shelters or the Band Shell for 2011. Requests to reserve the open park shelters are frequently received. A fee of \$25 was suggested to reserve the open shelters. However, they would still be available at no charge on a first come, first served basis if they are not reserved. They will be posted the same way as the Band Shell.

Special events may be held in the park open spaces for a \$40 user fee and the submission of a certificate of insurance to protect the City. Some events, such as the Honor Flight fund raiser and the fire department fund raiser, are community events that are open to the public and do not hinder use of the park. However, two events this year, the JBS employee recognition banquet and the Local Union 1161 members' celebration, have grown too large for the park space and have taxed the electrical services of the park facilities to the point that an electrician had to be called for the employee recognition event. The Board discussed the size of special events that the parks could actually accommodate and the other venues available for larger gatherings. After discussion, the Board determined that proposals for events that will have 50 people or more must be submitted to the Board for review.

Mike Woll motioned to recommend increasing the fees for Olson Campground as presented except that the tent site fee will be unchanged, to recommend permitting extended stays as discussed, to recommend no increase to the Band Shell, enclosed park shelter fees, and to the open space fee, to establish a fee of

\$25 to reserve the open park shelters, and to require that proposals for events to be held in the park open spaces shall be submitted to the Board for review and approval if the event will include 50 people or more. The motion was seconded by Shawn Fritz and passed unanimously.

Tennis Court Discussion

School District 518 is considering constructing an eight court complex that would include lights, outlets, walking paths, and a storage building with a restroom and concession stand. The School District, City, and several additional sources would fund the project. The School District requested the Centennial and Pleasant tennis courts be appropriately rebuilt. City Council concurred with the request.

Three options for court reconstruction were reviewed. Option 1 would reconstruct the courts to a tournament play facility and would include subbase, proper drainage, and a post tension concrete surface at an estimated project cost of \$180,000 to \$200,000 per site. Option 2 would reconstruct the courts to a high level recreational play surface. The reconstruction would be similar to that for a tournament court but the surface would be asphalt. The estimated project cost is \$115,000 per site. Option 3 would include milling and filling the larger cracks and placing an asphalt overlay over the entire surface. The reflective cracking would reappear in a short period of time, but the courts would remain even and would be a playable recreational court for many years. The estimated project cost is \$65,000 per site.

After discussion the three options, the Board determined that the best option would be to mill and overlay the courts (Option 3).

Update on Park Projects

Jim Laffrenzen reviewed the park projects including the fishing pier, outdoor pool site, Ehlers Park boat landing, the, multi-purpose path/sidewalk, Millard Walker Park restrooms, and the areas around the Chautauqua Park shelters.

The fishing pier has been ordered. The projected cost for the project is \$ 19,000 rather than \$ 26,000 due to the reconfiguration of the pier. It is anticipated the pier will be transported by a local trucking firm as a back haul load from the State Correction facility in Stillwater, where it is being constructed, to save on delivery cost.

The Ehlers Park boat landing parking lot and outdoor pool site projects are still be investigated.

The multi use path would run approximately 200 feet from the 7th Avenue/Lake Street/Lake Avenue intersection and would narrow to a sidewalk from that point to include in front of the home at 620 Lake Avenue finally connecting to the existing sidewalk on the easterly property line. The homeowner, Joe Bigner, is not in favor of installing a sidewalk in front of his property. However, the sidewalk would be located in public right of way. The Board requested that Mr. Bigner attend a Park and Rec Advisory Board meeting so that they may discuss the project with him.

The Millard Walker restrooms project is ready to go out for bids. The bids will be brought to the Board for review.

Scott Rosenberg and Jim Laffrenzen have looked at installing pavers in the areas around the Chautauqua Park shelters with Mark Boltjes. Five nearby evergreens have shallow roots and digging down the required seven inches would result in root damage that may kill the trees. Other options including wood chips and river rock were discussed.

Park Supervisor's Report

The park department has been busy trimming trees in parks, repairing picnic tables, and cleaning up leaves from the ditches and lakeshore.

Other Business

Evening Meetings

After discussion, the Board decided to move the meetings to evening. The meetings will now be held on the second Tuesday of every month at 7:00 p.m., except the January meeting, which will be Thursday, January 6, 2011, at 7:00 p.m.

Adjournment

The meeting adjourned at 8:06 a.m.

Julie Haack

Secretary

WORTHINGTON ECONOMIC DEVELOPMENT AUTHORITY
JANUARY 24, 2011

The meeting was called to order at 6:45 p.m. in City Hall Council Chambers by President Alan E. Oberloh with the following members present: Lyle Ten Haken, Mike Kuhle, Scott Nelson, Ron Wood, Mike Woll.

Staff present: Craig Clark, City Administrator; Brad Chapulis, Director of Community/Economic Development; Janice Oberloh, City Clerk.

MINUTES APPROVED

The motion was made by Scott Nelson, seconded by Mike Kuhle and unanimously carried to approve the Worthington Economic Development Authority Minutes of December 13, 2010.

RESOLUTION NO. 3456 ADOPTED APPROVING DECERTIFICATION OF TAX INCREMENT FINANCING DISTRICT NO. 4 (THOMPSON HOTEL)

Staff presented a resolution approving the decertification of Tax Increment Financing (TIF) District No. 4 (Thompson Hotel). The TIF District was established in 1986, and State Statute provides that decertification of the redevelopment TIF district is mandatory 25 years from the date of the first increment collected (1985). Based on the TIF plan, the City provided \$165,000 through bond issuance to be used toward the redevelopment expenditures of the Hotel. In 2002, the TIF plan was amended to allow the City to recuperate as much as possible of the \$177,969 in bond payments it incurred while the Hotel property was in tax forfeiture status. Mr. Chapulis noted that to date, \$93,564 has been recovered. The required decertification date was December 31, 2010, so the property will be on the tax rolls this year. The decertification will be considered by City Council at their regular meeting January 24, 2011.

The motion was made by Ron Wood, seconded by Scott Nelson and unanimously carried to adopt the following resolution approving the decertification of TIF District No. 4:

RESOLUTION NO. 3456 EDAu

(Refer to Resolution File for complete copy of Resolution)

ADJOURNMENT

The motion was made by Ron Wood, seconded by Mike Woll and unanimously carried to adjourn the meeting at 6:57 p.m.

Janice Oberloh, CMC
Secretary

ADMINISTRATIVE SERVICES MEMO

DATE: FEBRUARY 14, 2011
TO: HONORABLE MAYOR AND CITY COUNCIL
SUBJECT: ITEMS REQUIRING CITY COUNCIL ACTION OR REVIEW

CONSENT AGENDA CASE ITEMS

1. APPLICATION FOR EXEMPTION FROM LAWFUL GAMBLING PERMIT

The following application for Exemption from Lawful Gambling Permit has been received:

Organization:	Nobles County Pheasants Forever, Chapter 14
CEO:	Scott Rall
Type of Activity:	Raffles
Date of Event:	March 25, 2011
Location:	Long Branch Saloon, 206 Tenth St, Worthington, Minn.

Council action is requested on the application shown as *Exhibit 1*.

CASE ITEMS

2. PURCHASE OF PARCELS #31-3935-000 AND #31-3936-000

Council convened in closed session pursuant to Minnesota Statutes 13D.05 Subd. 3 (C) on December 13, 2010 to discuss the purchase of property owned by Rickbeil's Incorporated adjacent to the intersection of 10th Street and 1st Avenue. At this meeting Council prescribed the parameters of the purchase of the two properties.

As was discussed at this meeting the acquisition of these two properties is necessitated by the anticipated road closure of 1st Avenue between 9th and 10th Street as well as 9th Street between 1st and 2nd Avenue for purposes of construction of a new fire station.

As you will recall, failure to secure the Rickbeil property would create an orphan track to which we would have to maintain services. As a general rule, if someone else were proposing the vacation of a street we would look for it to be vacated from street to street and not creating a dead end, and this purchase is simply an equal expectation upon the City.

The proposed purchase price is \$23,640. The agreement (included as *Exhibit 2*) also includes the following provisions:

- Buyer agrees to pay cost associated with closing

- Successful vacation of 1st Avenue and 9th Street as previously mentioned
- Participation of seller in the rezoning process (completed)
- Lease back of the existing structure for \$1.00 until April 30, 2011 and optional lease back until September 30, 2011 for \$50 per month.

Council action is requested to allow the Mayor and Clerk to sign on behalf of the City the purchase agreement for \$23,640 and accompanying provisions.

3. **RESOLUTION OF COMMITMENT OF FUNDS FOR 59 NORTH INDUSTRIAL AND COMMERCIAL PARK INTERSECTION**

DEED and MNDOT have outlined several requirements for the City as we move forward on 59 North Commercial and Industrial Park Intersection that need to be completed or making substantial progress towards completion by June 30, 2011. Attached is *Exhibit 3* where DEED outlines four necessary elements. Item 3 requires that the City to adopt a resolution committing the necessary funds for the match. Included in *Exhibit 3* is a prepared resolution that itemizes the importance of the project for safety, flood mitigation and certainly the promotion of economic development. The State funds for the grant will provide \$3.3 million and require a City match of \$1.4 million. This is a 70% State and 30% City funded project.

The remaining items will be advanced by staff to meet the June 30, 2011 deadline.

Council action is requested to authorize the Mayor to sign and Clerk attest to the resolution included in *Exhibit 3*.

4. **DISTRICT 518 USE AGREEMENT FOR JOINT TENNIS COURT PROJECT**

Council had asked for a use agreement to stipulate the provisions of the City's partnership for the joint tennis court project with District 518. Attached as *Exhibit 4* is a proposed agreement that would grant the general public use of the courts, ensure 518 is responsible for the on-going maintenance of the facility and be in effect for a 10 year period.

It should be noted that Attorney Shepherd drafted the agreement, and with his position on the School Board, Council should be aware of this fact. It is staff's opinion that this agreement is simple and straight forward enough that it does not cause any concern.

Council action is requested to approve the use agreement, and authorize the Mayor to sign and Clerk attest the document outlining the provisions for a joint tennis court project between the City and ISD 518.

5. **REMAINING 2011 RATE APPROVALS FOR PRAIRIE VIEW GOLF LINKS**

City Council previously approved the 2011 annual rates for Prairie View Golf Links. Attached as *Exhibit 5* is the rate structure proposed by Dakota Golf Management (DGM). Generally speaking the fee structure increases by only a nominal amount of \$1 for the various rates.

The biggest change is the addition of the "Prairie View Card" option. This alternative is structured to provide an intermediate option for individuals who may be more than an occasional golfer but not golf enough to justify an annual membership. While the creation of this option does present implications for the cost sharing agreement between the City and DGM it is accommodated by Mr. Jansa's commitment to do a final assessment of the year end totals and do a reconciliation of the revenues as compared to 2010. In addition, the City gets a graduated percentage above the \$50,000 from the cost share formula.

The other modification is making some adjustments for the annual cart rental charges. Instituting some flexibility for the cart rental allows PVGL to better ensure all cart users are paying for the use of the cart. Previous cart rentals could have allowed an annual passholder to have other individuals ride free of charge. The new fee for family passholders will continue be the \$350 as was previously adopted. Instituting an individual rate and weekday only rate will allow alternatives for individuals to find a more cost effective alternative while enforcing a policy that anyone riding a cart pays for that privilege. Mr. Tom Jansa of Dakota Golf Management will be present to go over the proposed rate structure.

Council action is requested to approve the proposed rate structure for cart rentals, daily fees and the Prairie View Card as presented.

6. **2011 INDUSTRIAL WASTEWATER FACILITY FUND BUDGET**

Exhibit 6 is the proposed 2011 Industrial Wastewater Facility Fund Budget, Equipment Revolving Schedule, and Capital Improvement Program. Swift had 30 days in which to respond to the proposed budget and no comments have been received affecting the proposed budget.

Council action is requested for approval of the 2011 Industrial Wastewater Facility Fund Budget.

LG220 Application for Exempt Permit

An exempt permit may be issued to a nonprofit organization that:
 - conducts lawful gambling on five or fewer days, and
 - awards less than \$50,000 in prizes during a calendar year.

Application fee for each event If application postmarked or received:	
less than 30 days before the event \$100	more than 30 days before the event \$50

ORGANIZATION INFORMATION

Organization name: **Nobles County Pheasants Forever, Chapter 14**
 Previous gambling permit number: **X-04682-10-002**

Type of nonprofit organization. Check one.
 Fraternal Religious Veterans Other nonprofit organization

Mailing address: **P.O. Box 1033**
 City: **Worthington** State: **MN** Zip Code: **56187** County: **Nobles**

Name of chief executive officer (CEO): **Scott Rall**
 Daytime phone number: **507-372-7888**
 Email address: **rall@knology.net**

Attach a copy of ONE of the following for proof of nonprofit status. Check one.

- Do not attach a sales tax exempt status or federal ID employer numbers as they are not proof of nonprofit status.
- Nonprofit Articles of Incorporation OR a current Certificate of Good Standing.
 Don't have a copy? This certificate must be obtained each year from:
 Secretary of State, Business Services Div., 180 State Office Building, St. Paul, MN 55155 Phone: 651-296-2803
 - IRS income tax exemption [501(c)] letter in your organization's name.
 Don't have a copy? To obtain a copy of your federal income tax exempt letter, have an organization officer contact the IRS at 877-829-5500.
 - IRS - Affiliate of national, statewide, or international parent nonprofit organization (charter)
 If your organization falls under a parent organization, attach copies of both of the following:
 - a. IRS letter showing your parent organization is a nonprofit 501(c) organization with a group ruling, and
 - b. the charter or letter from your parent organization recognizing your organization as a subordinate.
 - IRS - proof previously submitted to Gambling Control Board
 If you previously submitted proof of nonprofit status from the IRS, no attachment is required.

GAMBLING PREMISES INFORMATION

Name of premises where gambling activity will be conducted (for raffles, list the site where the drawing will take place)
Long Branch

Address (do not use PO box): **206 10th Street**
 City: **Worthington** Zip Code: **56187** County: **Nobles**

Date(s) of activity (for raffles, indicate the date of the drawing)
March 25, 2011

Check the box or boxes that indicate the type of gambling activity your organization will conduct:
 Bingo* Raffles Paddlewheels* Pull-Tabs* Tipboards*

* Gambling equipment for pull-tabs, bingo paper, tipboards, and paddlewheels must be obtained from a distributor licensed by the Gambling Control Board. EXCEPTION: Bingo hard cards and bingo number selection devices may be borrowed from another organization authorized to conduct bingo.

To find a licensed distributor, go to www.gcb.state.mn.us and click on List of Licensed Distributors, or call 651-639-4000.

Also complete
Page 2 of this form.

LOCAL UNIT OF GOVERNMENT ACKNOWLEDGMENT

If the gambling premises is within city limits, a city official must check the action that the city is taking on this application and sign the application.

- The application is acknowledged with no waiting period.
- The application is acknowledged with a 30 day waiting period, and allows the Board to issue a permit after 30 days (60 days for a 1st class city).
- The application is denied.

Print city name _____
 On behalf of the city, I acknowledge this application.

Signature of city official receiving application

Title _____ Date ____ / ____ / ____

If the gambling premises is located in a township, a county official must check the action that the county is taking on this application and sign the application.
A township official is not required to sign the application.

- The application is acknowledged with no waiting period.
- The application is acknowledged with a 30 day waiting period, and allows the Board to issue a permit after 30 days.
- The application is denied.

Print county name _____
 On behalf of the county, I acknowledge this application.
 Signature of county official receiving application

Title _____ Date ____ / ____ / ____

(Optional) TOWNSHIP: On behalf of the township, I acknowledge that the organization is applying for exempted gambling activity within township limits. [A township has no statutory authority to approve or deny an application [Minnesota Statute 349.166]]

Print township name _____

Signature of township official acknowledging application

Title _____ Date ____ / ____ / ____

CHIEF EXECUTIVE OFFICER'S SIGNATURE

The information provided in this application is complete and accurate to the best of my knowledge. I acknowledge that the financial report will be completed and returned to the Board within 30 days of the date of our gambling activity.

Chief executive officer's signature  Date 1-20-11

Complete a separate application for each gambling activity:
 - one day of gambling activity,
 - two or more consecutive days of gambling activity,
 - each day a raffle drawing is held

Send application with:
 - a copy of your proof of nonprofit status, and
 - application fee for each event.
 Make check payable to "State of Minnesota."

To: Gambling Control Board
 1711 West County Road B, Suite 300 South
 Roseville, MN 55113

Financial report and recordkeeping required
 A financial report form and instructions will be sent with your permit, or use the online fill-in form available at www.gcb.state.mn.us. Within 30 days of the activity date, complete and return the financial report form to the Gambling Control Board.

[Print Form](#)

[Reset Form](#)

This form will be made available in alternative format (i.e. large print, Braille) upon request.
Data privacy notice: The information requested on this form (and any attachments) will be used by the Gambling Control Board (Board) to determine your organization's qualifications to be involved in lawful gambling activities in Minnesota. Your organization has the right to refuse to supply the information requested; however, if your organization refuses to supply this information, the Board may not be able to determine your organization's qualifications and, as a consequence, may refuse to issue a permit. If you supply the information requested,

the Board will be able to process your organization's application. Your organization's name and address will be public information when received by the Board. All other information provided will be private data until the Board issues the permit. When the Board issues the permit, all information provided will become public. If the Board does not issue a permit, all information provided remains private, with the exception of your organization's name and address which will remain public. Private data are available to: Board members, Board staff whose work requires access to the

information; Minnesota's Department of Public Safety; Attorney General; Commissioners of Administration, Minnesota Management & Budget, and Revenue; Legislative Auditor, national and international gambling regulatory agencies; anyone pursuant to court order; other individuals and agencies specifically authorized by state or federal law to have access to the information; individuals and agencies for which law or legal order authorizes a new use or sharing of information after this Notice was given; and anyone with your written consent.

PURCHASE AGREEMENT

Worthington, Minnesota

Dated: February __, 2011

Rickbeil's, Inc., a corporation organized under the laws of the State of Minnesota, with corporate offices located at 208 9th Street, Worthington, Minnesota 56187, as Seller, hereby acknowledge receipt from the City of Worthington, a municipal corporation organized under the laws of the State of Minnesota, as Buyer, the sum of Good and Valuable Consideration as earnest money and in part payment for the purchase of property situated in the County of Nobles, State of Minnesota, and legally described on Exhibit 'A', a copy of which is attached hereto and made a part hereof. The total purchase price for the above described property is the sum of Twenty-three Thousand Six Hundred Forty and No/100 (\$23,640.00), which Buyer agrees to pay at closing.

This sale is subject to the following terms and conditions:

1. REAL ESTATE TAXES

The parties shall pro-rate the real estate taxes due and payable in the year of closing and Buyer shall pay such real estate taxes due and payable thereafter.

2. ASSESSMENTS

In the event that the property is encumbered by assessments, Seller agrees to pay such assessments on or before the date of closing.

3. DATE OF POSSESSION

Seller agrees to deliver possession of the premises not later than the date of closing provided that all of the terms and conditions of this sale shall have been met.

4. RISK OF LOSS AND INSURANCE

Risk of loss of the property shall remain with the Seller until the date of closing or the date of possession, whichever occurs first. In the event this property is substantially damaged or destroyed by fire or any other cause before the risk of loss passes from Seller to Buyer, this agreement shall become null and void and all monies paid hereunder shall be refunded to the Buyer. Risk of loss of the property shall pass to the Buyer on the date of closing or the date of possession, whichever occurs first. In the event that the risk of loss passes from Seller to Buyer before the date of closing, Buyer shall obtain insurance of a type to be approved by Seller; and Seller shall be named as a loss payee on such insurance until the date of closing.

5. FIXTURES OR ITEMS THAT REMAIN WITH THE PROPERTY

Seller agrees that items of property hereinafter listed shall be considered to be a part of the real estate for the purpose of this purchase agreement.

None.

6. CONVEYANCE OF TITLE

Subject to the performance by the Buyer, Seller agrees to deliver to Buyer a Warranty Deed conveying marketable title subject to the following exceptions:

- A. Building and zoning laws, ordinances, State and Federal regulations.
- B. Restrictions relating to the use or improvement of the premises without effective forfeiture provisions.
- C. Reservation of any minerals or mineral rights to the State of Minnesota.
- D. Utility or drainage easements which do not interfere with present improvements.
- E. Any other easements of record.

7. WARRANTIES OF SELLER

In addition to the warranties, if any, contained in the deed of conveyance, Seller covenants that the buildings, if any, are entirely within the boundary lines of the property. In addition, Seller warrants that all appliances, heating equipment, air conditioning, wiring and plumbing used and located on the property are in proper working order at date of possession or date of closing, whichever is first.

8. ABSTRACT OF TITLE AND OBJECTIONS TO TITLE

The Seller shall, within a reasonable time after the date of this agreement, furnish an abstract of title or a certificate of title certified to date to include proper searches covering bankruptcies, and State and Federal liens and judgments. The Buyer shall be allowed 10 days after receipt thereof for examination of said title and the making of any objections to title. Said objections shall be in writing and, if not in writing, shall be deemed to be waived. If any objections are made, the Seller shall be allowed 120 days to make title marketable. Pending correction of title, the payments hereunder shall be postponed, but upon correction of title and within 10 days after written notice to Buyer, the parties shall perform this agreement according to its terms.

If the title is not marketable and is not made so within 120 days from the date of written objections thereto as provided above, this agreement shall be, at the option of the Buyer, null and void and neither party shall be liable for damages to the other party. All money theretofore paid by Buyer shall be refunded.

9. DEFAULT

Provided that Seller has complied with the terms and conditions of this contract and Buyer defaults, Seller may terminate this contract and retain all the payments made upon this contract. This provision shall not deprive either party of the right of enforcing the specific performance of this contract provided that the contract has not been terminated as aforesaid and further provided that the action to enforce such specific performance is commenced within six months after the right of action arises.

10. REPRESENTATIONS OF PARTIES

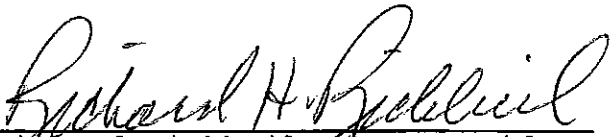
This contract contains the entire agreement between the parties, and neither party has relied upon any verbal or written representations, agreements, or understandings not set forth herein, whether made by an agent or a party hereto. Buyer states that he has relied on his own inspection of the premises.

11. ADDITIONAL TERMS AND CONDITIONS

- A. Buyer agrees to pay all costs associated with closing, including abstracting; deed preparation; deed tax; and recording fees.
- B. This Agreement is contingent upon the City successfully vacating that portion of First Avenue located between Ninth and Tenth Streets and that portion of Ninth Street between First and Second Avenues.
- C. Seller agrees to cooperate in the vacation of the streets and avenues identified in 11. B. above as well as in any change of zoning sought by the City as to the subject property and the former Campbell Soup property.
- D. Buyer agrees that Seller shall have the option, upon the payment of One Dollar (\$1.00), to lease back the warehouse located upon the subject property until 12:00 a.m. on April 30, 2011. Seller shall also have the option to continue to lease the warehouse on a monthly basis from Buyer from and after May 1, 2011 through 11:59 p.m. on September 30, 2011 upon payment to Buyer in the sum of \$50.00 on the 1st day of each month. Seller may vacate the premises at any time but will be obligated to pay rent through the end of the month in which the premises is vacated.

IN WITNESS WHEREOF, the parties hereto have set their hands the day and year first written above.

RICKBEIL'S, INC.


Richard Rickbeil, its President

CITY OF WORTHINGTON

BY: ALAN OBERLOH, MAYOR

ATTEST: JANICE OBERLOH, CLERK

That part of the Southeast Quarter of the Southeast Quarter of Section 23, Township 102 North, Range 40 West of the Fifth Principal Meridian, bounded and described as follows: Beginning at the point of intersection of the Southeasterly extension of the Southwesterly line of Tenth Street and the Southeasterly line of First Avenue; Thence Northeasterly, along said Southeasterly line of First Avenue, a distance of 90 feet; thence Southeasterly, along a line at right angles to the last described course, an approximate distance of 46 feet to a point distant 9 feet Northwesterly, as measured at right angles, from the center line of a Spur track (I.C.C. No. 158) of the Chicago, St. Paul, Minneapolis and Omaha Railway Company, as said track is now located and established; thence Southwesterly, along a line parallel with said Spur track center line, a distance of 90 feet, more or less, to the point of intersection of said Southeasterly extension of the Southwesterly line of Tenth Street; thence Northwesterly, along said extension of the Southwesterly line of Tenth Street, to the point of beginning.

AND

That part of the Southeast Quarter of the Southeast Fractional Quarter of Section 23, Township 102 North, Range 40 West of the 5th Principal Meridian, bounded as follows: On the Northwest by the Southeasterly line of First Avenue; on the Southwest by a line drawn at right angles to said Southeasterly line of First Avenue from a point on said Southeasterly line which is distant 313 feet Northeasterly, as measured along said Southeasterly line, from the Southeasterly extension of the Southwesterly line of Ninth Street; on the Southeast by a line drawn parallel with and distant 50 feet Northwesterly, as measured at right angles, from the center line of the main track of the Chicago, Saint Paul, Minneapolis and Omaha Railway Company, as now located and established; and on the Northeast by the Southeasterly extension of the Southwesterly line of Tenth Street.

Exhibit 'A'

Exhibit 2E

348'

TEN!

70'

TOTAL 2 LOTS = 9495 M
BUILDING 1775 M
\$25,016
8875 = 5,000
16, M = 170

348'

FIRST AVENUE

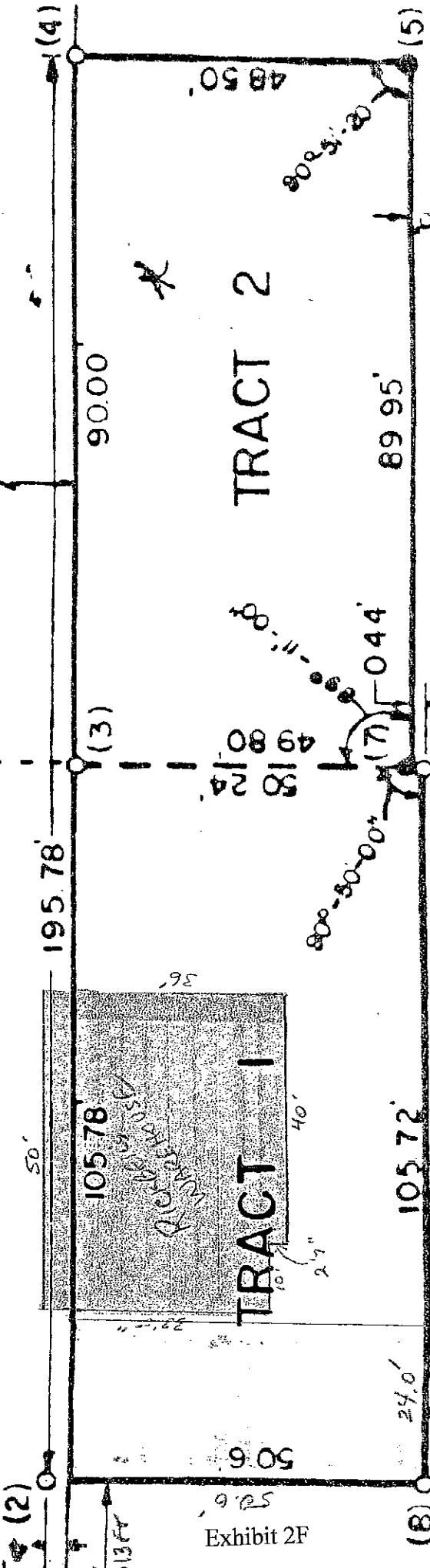


Exhibit 2F

C., ST P, M., & O. RAILWAY CO

TRACT 1
DEED NO. 73431

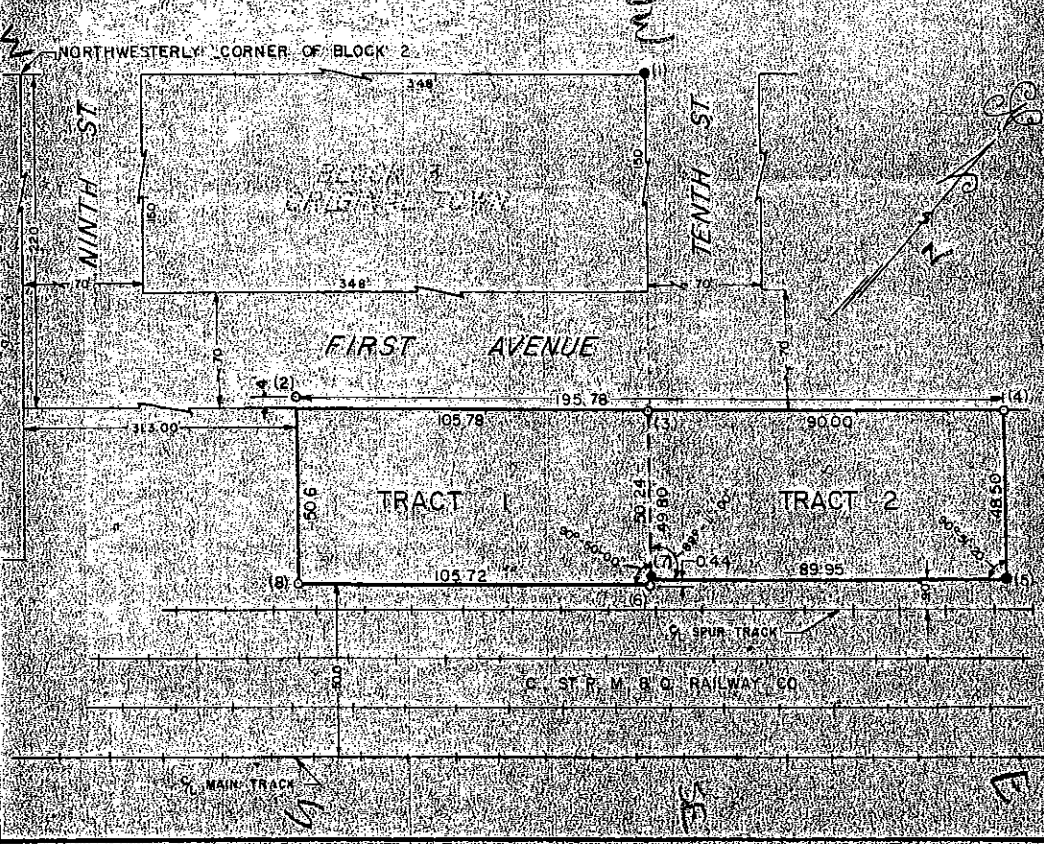
That part of the Southeast Quarter of the Southeast Quarter of Section 23, Township 102 North, Range 40 West of the Fifth Principal Meridian, bounded as follows: On the Northwest by the Southeastly line of First Avenue; on the Southwest by a line drawn at right angles to said Southeastly line of First Avenue from a point on said Southeastly line which is distant 313 feet Northeastly, as measured along said Southeastly line, from the Southeastly extension of the Southwestly line of Ninth Street; on the Southeast by a line drawn parallel with and distant 50 feet Northwestly, as measured at right angles, from the center line of the main track of the Chicago, Saint Paul, Minneapolis and Omaha Railway Company, as now located and established; and on the Northeast by the Southeastly extension of the Southwestly line of Tenth Street.

TRACT 2
DEED NO. 73431

That part of the Southeast Quarter of the Southeast Quarter of Section 23, Township 102 North, Range 40 West of the Fifth Principal Meridian, bounded and described as follows: Beginning at the point of intersection of the Southeastly extension of the Southwestly line of Tenth Street and the Southeastly line of First Avenue; thence Northeastly, along said Southeastly line of First Avenue, a distance of 90 feet; thence Southeastly, along a line at right angles to the last described course, a distance of 48.50 feet to a point distant 3 feet Northwestly, as measured at right angles, from the center line of a spur track (H.C.C. No. 150) of the Chicago, St. Paul, Minneapolis and Omaha Railway Company, as now located and established; thence Southwestly, along a line parallel with said Spur track center line, a distance of 89.95 feet, to the point of intersection of said Southeastly extension of the Southwestly line of Tenth Street; thence Northwestly, along said extension of the Southwestly line of Tenth Street, to the point of beginning.

REFERENCE

1. 1" Iron Pipe in Place of M.W. Corner of Block 1
2. Placed 5/8" X 3/4" Iron Stake
3. Placed "X" in Concrete
4. Placed "X" in Concrete
5. 2" Iron Stake in Place
6. Placed 1" X 2" Iron Stake
7. 1" Iron Stake in Place
8. Placed 5/8" X 3/4" Iron Stake



APPROVED FOR	RICKBELL, INC. - NORTHINGTON	I HEREBY CERTIFY THAT THIS SURVEY, PLAN OR DEED WAS PREPARED BY ME OR UNDER MY DIRECT SUPERVISION AND THAT I AM A DULY LICENSED LAND SURVEYOR UNDER THE LAWS OF THE STATE OF MINNESOTA.
LOCATION	SE 1/4 SEC. 23 - 102-40	
REASON	Subdiv. Tracts	
OWNER, INC.	NZ 1115 - SCALB. 1115-401	
DATE	3-10-72	

John P. Schumaker
 3-22-72

January 19, 2011

Craig Clark
City of Worthington – Community Development
303 Ninth Street
Worthington, MN 56187

RE: TED Phase II Funding Requirements

Dear Mr. Clark,

Thank you for visiting with us last week to discuss the next steps of your Highway 59 Infrastructure project. As we discussed, some specific steps need to be completed prior to June 30, 2011 to finalize the awarding of your Transportation Economic Development (TED) awards. The documentation you need to provide DEED prior to June 30, 2011 is:

1. ROW Acquisition Update
2. Mn/DOT District approval
3. City Resolution committing necessary funding
4. Update on environmental approval

When this packet of documentation is provided to DEED, a grant agreement will be sent to the city. If the city is unable to provide the necessary documentation prior to June 30, 2011, it may jeopardize receiving these funds.

If you have any questions or issues arise on the project, please feel free to contact me.

Sincerely,



Jeremy LaCroix
Business and Community Development Representative

Enclosure

cc: Matt Shands, Mn/DOT

CITY OF WORTHINGTON RESOLUTION NO. _____

**HWY. 59 NORTH COMMERCIAL AND INDUSTRIAL PARK
INTERSECTION IMPROVEMENTS**

WHEREAS, The City of Worthington has taken several steps to open up the first phase (114 acres) of the new 750 acre Worthington North Industrial/Commercial Park on the west side of TH 59 as well as improve access to the newer 50 acre Worthington Bioscience Park on the east side of TH 59; and

WHEREAS, Access improvements will be provided that will safely and efficiently serve the growing vehicular and trucking traffic demands to and from the new job center; and

WHEREAS, Infrastructure improvements include:

- Extend the 4-lane divided section on TH 59 north 1,200 feet
- Construction of turn lanes at TH 59 and Bioscience Drive
- Relocate County Ditch 12
- Construct an improved water crossing of County Ditch 12 on TH 59
- Sanitary Sewer and Watermain extensions in Bioscience Drive from east of TH 59 through the County Ditch 12 crossing; and

WHEREAS, To safely accommodate the expansion of the two major industrial growth areas, intersection improvements at Bioscience Drive are necessary to ensure the regional travelers on TH 59 as well as the truckers and laborers who work in the industrial areas are safe while commuting or moving goods and services; and

WHEREAS, County Ditch 12 causes flooding in the community due to the floodplain and the culvert under TH 59 is severely undersized and the construction of an improved waterway crossing on TH 59 will allow peak flows to be adequately accommodated; and

WHEREAS, Economic Development is the primary driver of the City's investment in opening up the first phase (114) acres of the new 750 acre Worthington North Industrial/ Commercial Park and further enhancing the 50 acre Bioscience Park on the east side of TH 59; and

WHEREAS, Infrastructure improvements are necessary to help facilitate the improvements for growth and job creation; and

WHEREAS, The State of Minnesota has established a funding program to promote economic development within the Department of Transportation and Department of Employment and Economic Development for intersections for economic development on an up to 70% State and 30% Local funding distribution;

NOW, THEREFORE, BE IT RESOLVED THAT THE City of Worthington has committed \$1.4 million from existing City fund balances for the total project cost of \$4.7.

Adopted by the City Council of the City of Worthington this _____ day of _____, 2011.

SEAL

Mayor

Attest: _____
City Clerk

COOPERATIVE USE OF TENNIS COURT FACILITY AGREEMENT

This Agreement made and entered into this ____ day of ____, 2011 by and between the City of Worthington, hereinafter called the "City", and Independent School District #518, hereinafter called the "School".

WHEREAS, School is planning a construction project to include eight (8) tennis courts, an equipment storage, and restroom facilities all of which are to be located upon School property and shall hereafter be referenced as the "tennis court facility"; and

WHEREAS, construction of the tennis court facility is estimated to cost approximately \$800,000.00; and

WHEREAS, School desires that the tennis court facility be utilized for School tennis team practices and meets as well as for educational classes; and

WHEREAS, the City desires that the tennis court facilities be utilized by the general public for recreational tennis as well as by the City, or its designee for the summer recreation program for the youth of the community; and

WHEREAS, Minn. Stat. 471.191 allows municipalities and school districts to expend monies for such a tennis court facility;

NOW THEREFORE, for and in consideration of the mutual Agreements and Covenants and Conditions expressed herein, it is hereby agreed as follows:

1. The City will contribute the sum of \$235,000.00 toward the tennis court facility.
2. The tennis court facility will be located upon School property.
3. School will use the tennis court facility for boys and girls tennis team practices and meets as well as for various education classes. Members of the general public may use the facility for recreational tennis and the City of Worthington, or its designee, may use the facility for the summer youth recreation program.
4. Reservations for use of the tennis court facility will be managed by School personnel. Initially, such reservations will be managed at the Worthington Middle School and/or District Office. If the reservation management is changed to another facility, School agrees to provide notice to City and to generally publicize such change.

5. The School reservation office will regularly post a schedule of use of the facilities at a prominent location at the facility which will allow members of the general public to know when the facility is open for use by the public. The reservation office will ensure that one group of courts (pod of four) at the facility is available at various times during each day of the outdoor season for use by the general public and that the use schedule is balanced between school and general public use.
6. School will provide all maintenance and upkeep of the facility and shall be responsible to insure the facility both for property damage and for liability. School shall also be responsible for all utilities, including lighting and electricity at the facility. The School would become the decision making authority (with City input) since all costs are the school's responsibility once the project is completed so long as the terms of this agreement are otherwise adhered to.
7. School and City agree that the facility will be used for tennis activities and that all school property rules will apply to the tennis court facility.
8. School and City agree that the term of this agreement shall be for a period of 10 years from and after the date set forth above. The term of this agreement is based on the percentage of contribution to the total project.
9. This agreement will be reviewed every five (5) years and adjusted as agreed to ensure current practices, behaviors and agreements are updated.

IN WITNESS WHEREOF, the parties hereto have caused this Agreement to be executed as of the day and year first above written.

INDEPENDENT SCHOOL DISTRICT
#518

CITY OF WORTHINGTON

By: _____
It's Chair

By: _____
It's Mayor

It's Clerk

It's Clerk

PRAIRIE VIEW GOLF LINKS RATES & PROGRAMS - 2011

Daily Green Fees

	2010	2011	w/ Prairie Card (\$60 cost)
9 Holes	\$ 14.00	\$ 15.00	\$ 8.00
18 Holes	\$ 21.00	\$ 22.00	\$ 11.00
2 nd 9	\$ 8.00	\$ 7.00	\$ 3.00
Weekend 9		\$ 17.00	\$ 9.00
Weekend 18		\$ 24.00	\$ 12.00

Golf Carts

	2010	2011	w/ Prairie Card (\$60 cost)
9 Holes	\$ 10.00	\$ 10.00	\$ 7.00
18 Holes	\$ 14.00	\$ 15.00	\$ 10.00

Driving Range

	2010	2011	w/ Prairie Card (\$60 cost)
Warm up		\$ 3.50	\$ 2.00
Regular	\$ 4.81	\$ 5.00	\$ 3.00
Reg. w/ Range Pass		\$ 1.00	

The Prairie Card

With The Prairie Card, golfers are eligible for substantial discounts on green fees, golf carts, and driving range. The Prairie Card is non-refundable and may only be used by the purchaser.

	2010	2011	Reg Rate (proposed)
Card fee		\$ 60.00	
9 Holes		\$ 8.00	\$ 15.00
18 Holes		\$ 11.00	\$ 22.00
2 nd 9		\$ 3.00	\$ 8.00
Weekend 9		\$ 9.00	\$ 17.00
Weekend 18		\$ 12.00	\$ 24.00
½ Cart - 9 Holes		\$ 7.00	\$ 10.00
½ Cart - 18 Hole		\$ 10.00	\$ 15.00
Range - Warm up		\$ 2.00	\$ 3.50
Range - Regular		\$ 3.00	\$ 5.00

Annual Golf Cart Rental

	2010	2011	Thru 3-31-11
Family	\$350.00	\$390.00	\$350.00
Single		\$330.00	\$300.00
9 Hole Weekday		\$250.00	\$225.00

Annual golf cart passes are for the passholder only. All players without an annual golf cart pass must pay the applicable fee to ride. All cart riders, both passholders and daily fee players, will ride with another player if a seat is available rather than take a separate cart. If a golfer with a 9 hole weekday cart pass wishes to play 18, they will pay the regular rate of \$5 for their 2nd 9. For the family cart pass, only one cart can be on the course at any given time.

CITY OF WORTHINGTON, MINNESOTA

605	INDUSTRIAL WASTEWATER FACILITY FUND REVENUE (30000) PROPRIETARY OPERATING REVENUES (37000)	2008 ACTUAL	2009 ACTUAL	'10 REVISED BUDGET	2010 PROJECTED	2011 BUDGET
	OTHER OPERATING REVENUES (37100)					
37189- 0000	OTHER REVENUES	16,156	30,036	10,000	16,750	10,000
37192- 0000	FACILITY COMPENSATION	2,233,595	2,592,011	1,880,243	1,786,790	1,763,130
37192- 0000	FACILITY COMPENSATION*	0	167,251	0	0	0
	TOTAL OTHER OPERATING REVENUES	2,249,751	2,789,298	1,890,243	1,803,540	1,773,130
	NON-OPERATING REVENUES (38000)					
38001- 0000	INTEREST EARNINGS	23,358	7,822	5,921	5,921	5,051
38012- 0000	REFUNDS & REIMBURSEMENTS-PY	115,559	0	0	0	0
	TOTAL NON-OPERATING REVENUES	138,917	7,822	5,921	5,921	5,051
	TOTAL REVENUES BEFORE OTHER FINANCING SOURCES	2,388,668	2,797,120	1,896,164	1,809,461	1,778,181
	OTHER FINANCING SOURCES (39000)					
39209- 0000	OTHER TRANSFERS - OPERATING PROCEEDS FROM LONG-TERM DEBT (39300)	0	0	390,740	390,740	682,010
39310- 0000	BOND PROCEEDS	0	0	743,700	0	766,000
39320- 0000	AMORTIZED PREMIUM ON BONDS	3,076	3,076	0	0	0
	TOTAL REVENUES BEFORE USE OF RETAINED EARNINGS	2,391,744	2,800,196	3,030,604	2,200,201	3,226,191
	USE OF RETAINED EARNINGS (26000)					
	USE OF RESERVED BALANCES (26300)					
26307- 0000	EQUIPMENT REVOLVING	59,111	0	33,668	33,668	86,763
	USE OF UNRESERVED UNDESIGNATED RETAINED EARNINGS					
26499- 0000	UNRESERVED UNDESIGNATED RETAINED	0	0	0	0	0
	TOTAL USE OF RETAINED EARNINGS	59,111	0	33,668	33,668	86,763
	TOTAL INDUSTRIAL WASTEWATER FACILITY FUND SOURCES	2,450,855	2,800,196	3,064,272	2,233,869	3,312,954

ADDITIONAL INFORMATION:

605- 37189- 0000 \$6,000 Wgtn Rendering proceeds
 37192- 0000 *Project design costs to be reimbursed as incurred.
 39209- 0000 Transfer from Fund 311 for City's portion of bond payment

CITY OF WORTHINGTON, MINNESOTA

605	INDUSTRIAL WASTEWATER FACILITY FUND EXPENDITURES (40000) DEBT SERVICE (47000)	2008 ACTUAL	2009 ACTUAL	'10 REVISED BUDGET	2010 PROJECTED	2011 BUDGET
	GENERAL OBLIGATION REVENUE BONDS (47200)					
47221	GO REVENUE BONDS - 2003A					
6611	BOND INTEREST	138,200	114,125	89,150	89,150	62,010
6621	FISCAL AGENT FEES	431	431	431	431	431
	TOTAL GO REVENUE BONDS - 2003A	138,631	114,556	89,581	89,581	62,441
	TOTAL DEBT SERVICE	138,631	114,556	89,581	89,581	62,441
	OPERATIONS (49400)					
	STABILIZATION POND PURIFICATION (49430)					
49439	OPERATIONS - SOURCE MISCELLANEOUS					
	PERSONNEL SERVICES					
1121	PERA CONTRIBUTIONS	0	1	0	0	0
1122	FICA CONTRIBUTIONS	0	1	0	0	0
1131	HEALTH INSURANCE ADMIN/CLAIMS	0	5	0	0	0
	TOTAL PERSONNEL SERVICES	0	7	0	0	0
	OTHER SERVICES AND CHARGES					
3307	MANAGEMENT FEES	6,000	6,000	6,000	6,000	6,000
3319	MISC PROFESSIONAL SERVICES	1,519,795	1,563,597	1,416,173	1,345,350	1,397,000
3361	GENERAL LIABILITY INSURANCE	7,515	7,845	7,900	8,636	8,800
3362	PROPERTY INSURANCE	3,862	4,101	4,200	3,900	4,000
3403	IMPROVEMENTS OTHER THAN BUILDINGS	7,974	776	5,000	2,000	5,000
3404	MACH & EQUIP - REPAIR & MAINT	3,850	0	21,732	8,332	7,500
3419	MISC RENTALS	532	252	500	1,000	1,000
3437	LICENSES AND TAXES	9,174	8,924	8,600	8,974	9,000
	TOTAL OTHER SERVICES AND CHARGES	1,558,702	1,591,495	1,470,105	1,384,192	1,438,300
	TOTAL OPERATIONS-SOURCE MISCELLANEOUS	1,558,702	1,591,502	1,470,105	1,384,192	1,438,300
49499	GENERAL MISCELLANEOUS					
	DEBT SERVICE/TRANSFERS					
6612	OTHER LONG-TERM OBLIGATION INTERE	0	0	4,012	4,012	2,045
	TOTAL DEBT SERVICE/TRANSFERS	0	0	4,012	4,012	2,045
	TOTAL MISCELLANEOUS	0	0	4,012	4,012	2,045
	TOTAL OPERATIONS	1,558,702	1,591,502	1,474,117	1,388,204	1,440,345
	ADMINISTRATION (49600)					
	WASTEWATER ADMINISTRATION (49610)					
49619	GENERAL ADMINISTRATION MISCELLANEOUS					
	OTHER SERVICES AND CHARGES					
3301	AUDITING AND ACCOUNTING SERVICES	13,235	11,089	11,202	11,202	13,324
3361	GENERAL LIABILITY	63	1,655	1,700	910	1,000
3438	REFUNDS AND REIMBURSEMENTS	0	232,272	0	0	0
	TOTAL OTHER SERVICES AND CHARGES	13,298	245,016	12,902	12,112	14,324
	TOTAL GENERAL ADMINISTRATION MISC	13,298	245,016	12,902	12,112	14,324
	TOTAL EXPENDITURES BEFORE FIXED ASSETS	1,710,631	1,951,074	1,576,600	1,489,897	1,517,110
	FIXED ASSETS (49700)					
49769	FA MISCELLANEOUS					
5549	MACHINERY & EQUIPMENT	40,091	0	33,668	33,668	164,157
	TOTAL FA MISCELLANEOUS	40,091	0	33,668	33,668	164,157

CITY OF WORTHINGTON, MINNESOTA

605	INDUSTRIAL WASTEWATER FACILITY FUND FIXED ASSETS (49700)	2008 ACTUAL	2009 ACTUAL	'10 REVISED BUDGET	2010 PROJECTED	2011 BUDGET
49771	FACILITY IMPROVEMENTS TO INCREASE CAPACITY					
5539	IMPROVEMENT MISCELLANEOUS	0	167,251	0	0	0
	TOTAL FACILITY IMPR TO INCR CAPACITY	0	167,251	0	0	0
49772	REPLACE SEWER FROM MANHOLE 9 TO EAST					
5539	IMPROVEMENT MISCELLANEOUS	0	0	507,800	0	523,000
	TOTAL REPL SEWER FROM MANHOLE 9 TO EAST	0	0	507,800	0	523,000
49773	TUNNEL NEW SEWER UNDER 1-90					
5539	IMPROVEMENT MISCELLANEOUS	0	0	235,900	0	243,000
	TOTAL TUNNEL NEW SEWER UNDER 1-90	0	0	235,900	0	243,000
49774	NEW CHEMICAL FEED LINES					
5539	IMPROVEMENT MISCELLANEOUS	0	0	0	0	30,000
	TOTAL NEW CHEMICAL FEED LINES	0	0	0	0	30,000
49775	NEW RAW LIFT FORCE MAIN					
5539	IMPROVEMENT MISCELLANEOUS	0	0	0	0	95,000
	TOTAL NEW RAW LIFT FORCE MAIN	0	0	0	0	95,000
	TOTAL FIXED ASSETS	40,091	167,251	777,368	33,668	1,055,157
	TOTAL EXPENDITURES BEFORE INTERFUND LIABILITIES AND INCREASE IN RETAINED EARNINGS	1,750,722	2,118,325	2,353,968	1,523,565	2,572,267
	LIABILITY PAYMENTS (20000)					
214XX- 0000	PRINCIPAL-BIO SOLIDS REMOVAL	0	0	49,163	49,163	49,084
21810- 0000	BOND PRINCIPAL	535,000	555,000	590,000	590,000	620,000
	TOTAL PRINCIPAL	535,000	555,000	639,163	639,163	669,084
	INCREASE IN RETAINED EARNINGS (26000)					
	INCREASE IN RESERVES (26300)					
26307- 0000	EQUIPMENT REVOLVING	82,014	73,193	71,141	71,141	71,603
	INCREASE IN UNRESERVED UNDESIGNATED RETAINED EARNINGS (26400)					
26499- 0000	UNRESERVED UNDESIGNATED RETAINED EARNINGS	83,119	53,678	0	0	0
	TOTAL INCREASE IN RETAINED EARNINGS	165,133	126,871	71,141	71,141	71,603
	TOTAL INDUSTRIAL WASTEWATER FACILITY FUND USES	2,450,855	2,800,196	3,064,272	2,233,869	3,312,954

ADDITIONAL INFORMATION:

605- 49439- 2229	Rip Rap and gravel materials
3319	Contract to operate plant, other professional services
3403	Labor costs for fence repairs, graveling, plowing, weed mowing, Rip Rap on dike, etc.
3404	Install standby clarifier mechanism
3419	Snow plow, blade, tractor and mower, two ton trucks, hauling gravel, Rip Rap, etc. End loader - loading gravel, Rip Rap, etc.
3437	Use of pay loader for clean up of dead trees and brush
3437	NPDES annual permit fee
49499- 6612	Interest on loan for Bio solids removal
49769- 5549	Replace raw lift pump check valves \$14,100, replace blower from ERS \$74,057, replace and upgrade anaerobic lift station pump \$76,000 (\$12,706 from ERS)

CITY OF WORTHINGTON, MINNESOTA
 CAPITAL IMPROVEMENT PROGRAM
 FOR THE YEARS 2011 - 2015
 (AMOUNTS IN DOLLARS)

I.	2011	INDUSTRIAL WASTEWATER FACILITY	PROPOSED BUDGETARY FUND/ACCOUNTS	PROJECT TOTALS	GENERAL TAX FINANCING	CAPITAL RESERVE FINANCING	UTILITY REVENUE FINANCING	SPECIAL ASSESSMENT FINANCING	G.O. BOND FINANCING	G.O. REV BOND FINANCING	STATE AID FINANCING	FEDERAL AID FINANCING	OTHER
	11	REPLACE SEWER FROM MANHOLE	605-49772-55XX	523,000					523,000				
	12	TUNNEL NEW SEWER UNDER I-90	605-49773-55XX	243,000					243,000				
	13	NEW CHEMICAL FEED LINES	605-49774-55XX	30,000			30,000						
	14	NEW RAW LIFT FORCE MAIN	605-49775-55XX	95,000			95,000						
	2011	INDUSTRIAL WASTEWATER FACILITY TOTALS		891,000	0	0	125,000	0	786,000	0	0	0	0
I.	2012	INDUSTRIAL WASTEWATER FACILITY											
	11	FACILITY IMPR TO INCR CAPACITY	605-49771-55XX	2,500,000					2,500,000				
	2012	INDUSTRIAL WASTEWATER FACILITY TOTALS		2,500,000	0	0	0	0	2,500,000	0	0	0	0
I.	2013	INDUSTRIAL WASTEWATER FACILITY											
	11	RECON SEWER ALONG RR I-90 NORTH		351,250					351,250				
	2013	INDUSTRIAL WASTEWATER FACILITY TOTALS		351,250	0	0	0	0	351,250	0	0	0	0
I.	2014	INDUSTRIAL WASTEWATER FACILITY											
	11	INDUSTRIAL WASTEWATER FACILITY		0									
	2014	INDUSTRIAL WASTEWATER FACILITY TOTALS		0	0	0	0	0	0	0	0	0	0
I.	2015	INDUSTRIAL WASTEWATER FACILITY											
	11	INDUSTRIAL WASTEWATER FACILITY		0									
	2015	INDUSTRIAL WASTEWATER FACILITY TOTALS		0	0	0	0	0	0	0	0	0	0

CITY OF WORTHINGTON, MINNESOTA

EQUIPMENT REVOLVING SCHEDULE
FOR THE YEARS 2011-2015
(AMOUNTS IN DOLLARS)

Install Date	Equipment Description	Years of Useful Life	Replace in (Year)	Reserve Goal	12/31/2010 Reserve Balance	Add to Reserve for 2011	Withdraw for 2011	Carry-over from 2010	12/31/2011 Reserve Balance	DECEMBER 31 RESERVE BALANCES			
										2012	2013	2014	2015
INDUSTRIAL WASTEWATER FACILITY FUND - 605													
99	RAW INFLUENT PUMPS	15	2021	45,000	0	4,500			4,500	9,000	13,500	18,000	22,500
89	RECYCLE SLUDGE PUMPS	20	2016	17,130	16,932	33			16,965	16,998	17,031	17,064	17,097
89	WASTE AND SCUM PUMP	20	2016	9,510	8,508	167			8,675	8,842	9,009	9,176	9,343
89	ANAEROBIC EFF PUMP	22	2011	12,706	12,128	578	12,706		0	578	1,156	1,734	2,312
89	ANAEROBIC EFF PUMP	22	2016	12,706	10,843	311			11,154	11,465	11,776	12,087	12,398
99	AUTOMATIC SAMPLER	15	2015	10,225	7,876	469			8,345	8,814	9,283	9,752	10,221
89	CLARIFIER MECHANISM W/O DR	20	2014	30,000	19,126	2,719			21,845	24,564	27,283	30,000	1,500
06	AERATION DIFFUSERS (1000)	6	2012	12,000	11,332	333			11,665	12,000	2,000	4,000	6,000
	AERATION DIFFUSERS (1350)	6	2013	42,335	8,100	2,700			10,800	13,500	16,200	18,900	21,600
	AERATION DIFFUSERS (1350)	6	2014	43,600	5,400	2,700			8,100	10,800	13,500	16,200	18,900
89	AERATION BLOWER	22	2011	74,057	70,691	3,366	74,057		0	3,366	6,732	10,098	13,464
89	AERATION BLOWER	22	2015	74,057	59,440	2,923			62,363	65,286	68,209	71,132	74,055
89	AERATION BLOWER SPARE				0	0			0	0	0	0	0
89	ELECTRIC INSTRUMENT	20	2015	84,400	76,557	1,568			78,125	79,693	81,261	82,829	84,397
03	GENERATOR	20	2024	29,300	7,600	1,550			9,150	10,700	12,250	13,800	15,350
04	GRAVITY BELT THICKENER	15	2019	260,000	90,479	17,810			108,289	126,099	143,909	161,719	179,529
04	NETZSCH PROG CAVITY PUMP	15	2019	15,000	4,616	1,154			5,770	6,924	8,078	9,232	10,386
04	SOD-ALUM PULSAFEEDERS (2)	15	2019	21,700	4,174	835			5,009	5,844	6,679	7,514	8,349
04	GORMAN RUPP MIXER PUMP	15	2019	17,650	5,432	1,358			6,790	8,148	9,506	10,864	12,222
04	KSB DECONT PUMP	15	2019	7,500	2,308	577			2,885	3,462	4,039	4,616	5,193
04	CONTROL PANELS/MCC'S	15	2019	50,000	15,384	3,846			19,230	23,076	26,922	30,768	34,614
04	CLARIFIER DRIVE (SPARE)				0	0			0	0	0	0	0
04	AQUA DISK FILTERS(2)	20	2024	268,000	59,556	14,889			74,445	89,334	104,223	119,112	134,001
04	KSB FILTER PUMPS(2)	20	2024	22,000	4,888	1,222			6,110	7,332	8,554	9,776	10,998
04	FILTER PUMPS VFD DRIVES (2)	20	2024	17,000	3,776	944			4,720	5,664	6,608	7,552	8,496
SUBTOTAL INDUSTRIAL WASTEWATER FACILITY FUND - 605					505,146	66,552 *	86,763	0	484,935	551,489	607,708	675,925	712,925
INTEREST EARNINGS ERS (1.0%)					0	5,051			5,051	7,350	8,383	9,241	10,277
TOTAL INDUSTRIAL WASTEWATER FACILITY FUND - 605					505,146	71,603	86,763	0	489,986	558,839	616,091	685,166	723,202

*Used for facility compensation calculation.

ENGINEERING MEMO

DATE: FEBRUARY 10, 2011
TO: HONORABLE MAYOR AND COUNCIL
SUBJECT: ITEMS REQUIRING COUNCIL ACTION OR REVIEW

CASE ITEMS

1. RELEASE EASEMENT INTERESTS IN TH 60 RIGHT-OF-WAY AND GRANT TEMPORARY EASEMENTS

The Minnesota Department of Transportation (MnDOT) is acquiring portions of various parcels required for the TH 59/60 improvement project. In certain cases the City has utility and/or drainage easements within and adjacent to the property acquired for right-of-way. In order to obtain complete interest in the right-of-way, MnDOT is seeking the release of the City's easement interests in the parcels. Release of the easements by quitclaim deed as desired by MnDOT will release the easements as well as any other interest the City may have in the parcels. MnDOT is also seeking temporary easements from the City over the areas adjacent to these parcels which are within construction easements and have utility and/or drainage easements. In regard to a remnant parcel on County Road 57 south of the corporate limits(Parcel 63) , MnDOT has determined that the City had some type of roadway interest over the parcel. It is not clear what that roadway interest would have been nor what purpose it would have served. MnDOT is also seeking release of whatever interest the City may have in this parcel.

Included as a separate attachment to the agenda is a map showing the affected parcels and temporary easement areas. Also attached to the maps are the quitclaim deeds and temporary easements being requested by MnDOT.

Staff recommends that Council authorize execution of the deeds and easements by passing the resolution included in Exhibit 1.

Council may note that other City easements are involved in parcels being acquired through condemnation proceedings. Those easements are addressed in those proceedings.

RESOLUTION
AUTHORIZING EXECUTION OF QUIT CLAIM DEEDS
AND TEMPORARY EASEMENTS

WHEREAS, The State has requested the City to Quit Claim their interest in the following:

Parcel 13 as shown on Minnesota Department of Transportation Right of Way Plats numbered 53-33, 53-35, & 53-44,
Parcel 14 as shown on Minnesota Department of Transportation Right of Way Plat numbered 53-34,
Parcel 36 as shown on Minnesota Department of Transportation Right of Way Plats numbered 53-36 & 53-37,
Parcel 39 as shown on Minnesota Department of Transportation Right of Way Plat numbered 53-37,
Parcel 40 as shown on Minnesota Department of Transportation Right of Way Plat numbered 53-37,
Parcel 41 as shown on Minnesota Department of Transportation Right of Way Plats numbered 53-37 & 53-39,
Parcel 63 as shown on Minnesota Department of Transportation Right of Way Plat numbered 53-32;

AND WHEREAS, the State has also requested the City grant Temporary Easements, as marked on the right of plats by the temporary easement symbol and expiring December 1, 2015, for the following:

Parcel 13 as shown on Minnesota Department of Transportation Right of Way Plats numbered 53-33, 53-35, & 53-44,
Parcel 14 as shown on Minnesota Department of Transportation Right of Way Plat numbered 53-34,
Parcel 36 as shown on Minnesota Department of Transportation Right of Way Plats numbered 53-36 & 53-37,
Parcel 39 as shown on Minnesota Department of Transportation Right of Way Plat numbered 53-37,
Parcel 40 as shown on Minnesota Department of Transportation Right of Way Plat numbered 53-37,
Parcel 41 as shown on Minnesota Department of Transportation Right of Way Plats numbered 53-37 & 53-39.

NOW THEREFORE, BE IT RESOLVED BY THE CITY COUNCIL OF THE CITY OF WORTHINGTON, MINNESOTA:

1. The Mayor and Clerk are authorized to execute Quit Claim Deeds for said Parcels 13, 14, 36, 39, 40, 41, and 63.
2. The Mayor and Clerk are authorized to execute Temporary Easements pertaining to said Parcels 13, 14, 36, 39, 40, and 41.

Adopted by the City Council of the City of Worthington, Minnesota, this the 14th day of February, 2011.

(SEAL)

Mayor

Attest _____

City Clerk

COMMUNITY/ECONOMIC DEVELOPMENT MEMO

DATE: FEBRUARY 11, 2011
TO: HONORABLE MAYOR AND COUNCIL
SUBJECT: ITEMS REQUIRING COUNCIL ACTION OR REVIEW

CASE ITEMS

1. CHANGE OF ZONE APPLICATION (FIRST READING) - City of Worthington & Rickbeil's Inc.

The City of Worthington and Rickbeil's Inc., have submitted an application to rezone the properties they own between the northern half of the former Chicago, Rock Island, and Pacific Railroad Company right-of-way and 10th Street and from 2nd Avenue to the Union Pacific Railroad Company right-of-way. If approved, the applicants' properties would be rezoned from the current "M-1" - Light Manufacturing and "M-2" - General Manufacturing designations to "B-2" - Central Business District. The legal description of the subject property under consideration is as follows:

All of Block 3, Original Plat, City of Worthington, Nobles County, Minnesota.

Together with,

That part of Auditor's Subdivision of Block 2, Original Plat, City of Worthington, Nobles County, Minnesota, and that part of the SE $\frac{1}{4}$ SE $\frac{1}{4}$ and Government Lots 4 and 5 of Section 23, Township 102N, Range 40W, City of Worthington, Nobles County, Minnesota, and that part of the NE $\frac{1}{4}$ NE $\frac{1}{4}$ and Government Lots 1 and 2 of Section 26, Township 102N, Range 40W, City of Worthington, Nobles County, Minnesota, described as follows:

Beginning at the most northerly corner of Auditor's Subdivision of Block 2, Original Plat, City of Worthington, Nobles County, Minnesota, according to the recorded plat thereof; thence on an assumed bearing of south 42°09'26" east, along the northeasterly line of said Auditor's Subdivision, a distance of 220.00 feet; thence north 47°52'16" east a distance of 313.00 feet; thence south 42°07'44" east a distance of 50.87 feet; thence south 43°45'51" west a distance of 92.95 feet; thence south 44°03'32" west a distance of 80.89 feet; thence south 42°04'02" east a distance of 0.50 feet; thence south 47°56' west a distance of 557.55 feet to the southeasterly extension of the northeasterly line of Lot 12 of said Auditor's Subdivision; thence north 42°09'27" west, along said southeasterly extension, a distance of 18.80 feet to the most easterly corner of said Lot 12; thence continuing north 42°09'27" west, along the northeasterly line of said Lot 12, a distance of 140.02 feet to the most northerly corner of said Lot 12; thence south 47°52'26" west, along the northwesterly line of said Lot 12, a distance of 30.00 feet to the southwesterly line of the northeasterly 30.00 feet of said Lot 12; thence south 42°09'27" east, along said southwesterly line, a distance of 140.02 feet to the southeasterly line of said Auditor's Subdivision; thence south 47°52'16" west, along said southeasterly line, a distance of 448.53 feet to the east line of Government Lot 2 of said Section 26; thence south 0°29'15" east, along said east line and the southeasterly line of said Auditor's Subdivision, a distance of 8.02 feet; thence south 47°52'27" west, along said southeasterly line, a distance of 69.96 feet to the northeasterly line of the southwesterly 6.00 feet of Lot 19 of said Auditor's Subdivision; thence northwesterly, along said northeasterly line, along a non-tangential curve, concave to the northeast, having a radius of 1141.83 feet, a central angle of 13°48'33", the chord of said curve bears north 31°44'19" west, a chord distance of 274.53 feet, an arc distance of 275.20 feet to the northwesterly line of said Auditor's Subdivision; thence north 47°52'26" east, along said northwesterly line, a distance of 922.17 feet to the point of beginning.

Together with,

That part of the Southeast Quarter of the Southeast Fractional Quarter of Section 23, Township 102 North, Range 40 West of the 5th P.M., bounded as follows: Beginning at the point of intersection of the southeasterly extension of the southwesterly line of Tenth Street and the southeasterly line of First Avenue; thence northeasterly along said southeasterly line of First Avenue, a distance of 90 feet; thence southeasterly, along a line at right angles to the last described course, an approximate distance of 46 feet to a point distant 9 feet northwesterly, as measured at right angles, from the center line of a Spur Track (I.C.C. No. 158) of the Chicago, St. Paul, Minneapolis and Omaha Railway Company, as said track is now located and established; thence southwesterly, along a line parallel with said Spur Track center line, a distance of 90 feet, more or less, to the point of intersection of said southeasterly extension of the southwesterly line of Tenth Street; thence northwesterly, along said extension of the southwesterly line of Tenth Street, to the point of beginning.

and

That part of the Southeast Quarter of the Southeast Fractional Quarter of Section 23, Township 102 North, Range 40 West of the 5th P.M., bounded as follows: on the northwest by the southeasterly line of First Avenue; on the southwest by a line drawn at right angles to said southeasterly line of First Avenue from a point on said southeasterly line which is distant 313 feet northeasterly, as measured along said southeasterly line, from the southeasterly extension of the southwesterly line of Ninth Street; on the southeast by a line drawn parallel with and distance 50 feet northwesterly, as measured at right angles, from the center line of the main track of the Chicago, St. Paul, Minneapolis and Omaha Railway Company, as now located and established; and on the northeast by the southeasterly extension of the southwesterly line of Tenth Street. Except easements of record.

The Planning Commission considered the change of zone application at its February 1, 2011, meeting. The Commission believes the proposed zoning classification would conform with the definition and intent of downtown mixed use as outlined in the City's Comprehensive Plan. It also believes that industrial land uses are not desired or compatible with the purpose and intent of the downtown / central business district. The proposed change eliminates any chance of any future industrial opportunities and, as a result, would strengthen the character of the downtown neighborhood. They unanimously recommended approval of the change of zone application as presented in Exhibit 1. Their recommendation was based on the following considerations:

1. Approximately 8 acres in size, the properties in question are currently zoned "M-1" - Light Manufacturing and/or "M-2" - General Manufacturing. A copy of the zoning map of the subject area is provided in Exhibit 1. These properties were originally platted in 1872 and have been utilized for many commercial / industrial purposes over the years, including the following: creamery, freight storage, bulk petroleum station, grocery store, lumberyard, grain storage, and poultry processing. The City owns the property formally known as the former Campbell Soup property while Rickbeil's Inc., owns the property located at the intersection of 1st Avenue and 10th Street. A map illustrating the breakdown in property ownership is also provided in Exhibit 1.

The applicants are requesting that the properties be rezoned from "M-1" and "M-2" to "B-2" - Central Business District. The applicants believe that industrial development is not an appropriate land use in the downtown and that a change of zone is necessary to facilitate redevelopment of the subject area. The "B-2" designation was selected to

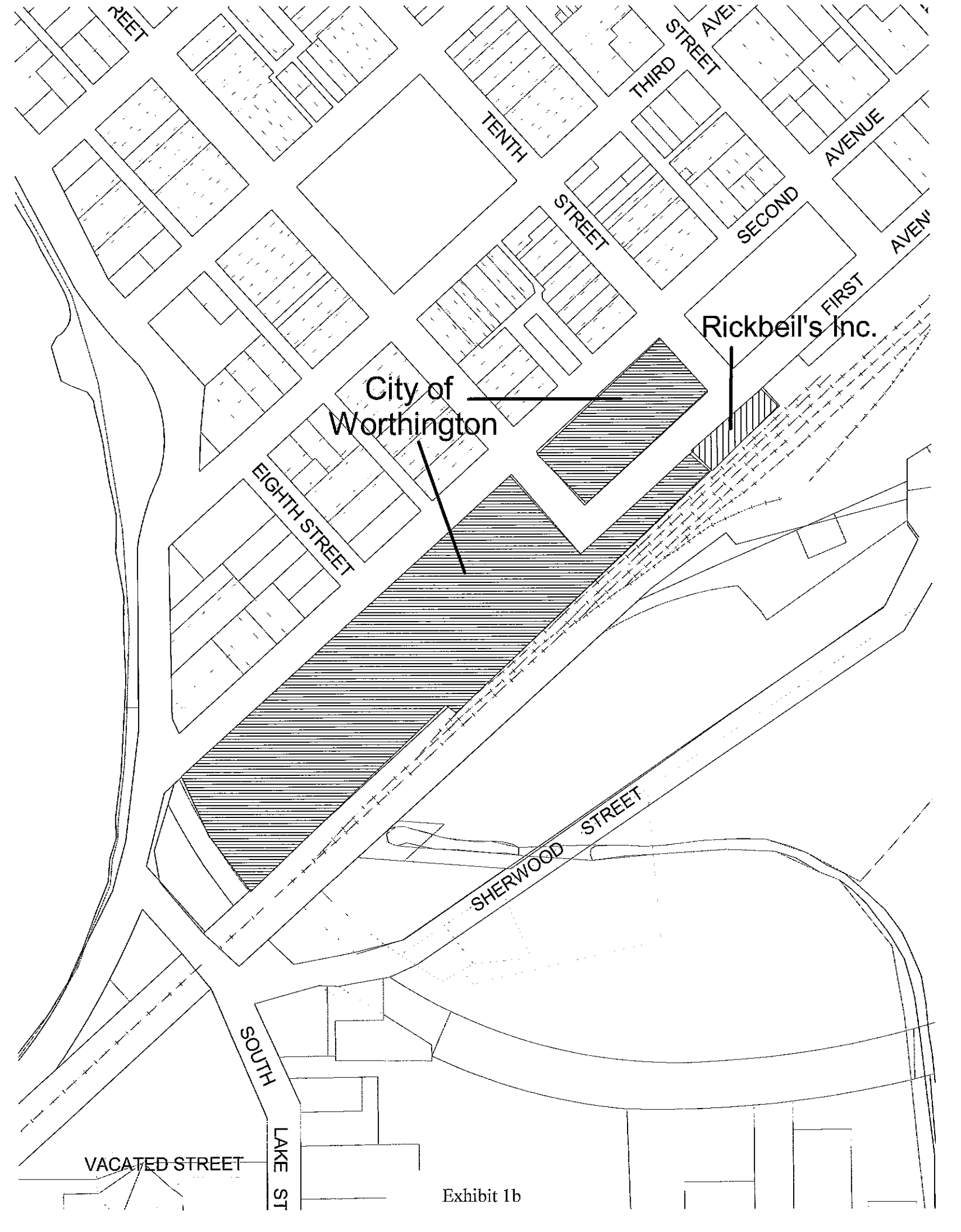
reflect the goals and objectives of the Comprehensive Plan (see Consideration #2) and to allow for compatible redevelopment opportunities, including the fire station being considered by the City of Worthington. A copy of the schedule of uses for the existing and proposed zoning classifications is included in Exhibit 1 for the Council's use and reference.

2. The Comprehensive Plan is a tool that is used to guide growth, redevelopment, and improvements in Worthington. Included in the Plan is a Land Use Map, which describes the use of property and enforces land use patterns, identifies places where change is needed and sets the form and location for future growth. A copy of the current Land Use Map is included as Exhibit 1.

The Land Use Map designates the subject area for downtown mixed use. Downtown mixed use is described as the transitional area on the periphery of downtown as well as the corridors leading into downtown. This category anticipates redevelopment of these corridors to provide a mixture of residential, office, commercial, and civic uses that will add additional population base and services/products which compliment the downtown core. Furthermore, the Comprehensive Plan identifies the importance of the redevelopment of the former Campbell Soup property in the vitality of downtown and the role it plays in the connection of the downtown and Lake Okabena. A copy of the Downtown Mixed Use section of the Comprehensive Plan is included as Exhibit 1.

3. The subject property is surrounded by an array of land uses ranging from single family residential to commercial/industrial. Below is a summary of the surrounding land uses.

North -	Commercial
South -	Commercial / Open Space
East -	U.P. Railroad / industrial
West -	Commercial and single family residential



City of
Worthington

Rickbeil's Inc.

VACATED STREET

SOUTH

LAKE ST

Exhibit 1b

APPENDIX E: TABLE 5. SCHEDULE OF USE REGULATIONS

SCHEDULE OF USE REGULATIONS																	
RESIDENTIAL USE GROUPS	KEY: P - Permitted Use S - Special Development A - Accessory Use																
	RESIDENTIAL								BUSINESS				INDUSTRIAL			OTHER	
	R-1	R-2	R-3	R-4	R-5	R-6	R-7	B-1	B-2	B-3	B-4	M-1	M-2	I	S	TZ	L
A. Single Family	P	P	P	P	S	S	P	P	S	-	-	-	-	S	-	P	-
B. Townhouse	S	P	P	P	P	-	-	S	-	-	-	-	-	S	-	S	-
C. Two family	S	P	P	P	S	-	-	S	-	-	-	-	-	-	-	S	-
D. Multi-family	S	S	S	P	P	-	-	-	S	-	-	-	-	-	-	-	-
E. Mobile Homes	-	-	-	-	-	P	-	-	-	-	-	-	-	-	-	-	-
F. Home Occupations	A	A	A	A	A	A	A	A	A	-	-	-	-	A	-	A	-
G. Boarding Houses	-	-	S	S	S	-	-	S	S	-	-	-	-	S	-	-	-
H. Guest Home	-	-	-	S	S	-	-	-	S	S	-	-	-	S	-	-	-
I. Fraternity & Sorority Houses	-	-	-	S	P	-	-	-	S	-	-	-	-	S	-	-	-
J. Child Care	S	S	S	S	P	S	S	S	S	S	S	-	-	S	-	-	-
K. Convalescent, Nursing and Rest Homes	-	-	S	S	S	-	-	-	S	-	-	-	-	S	-	-	-
L. Hospitals	-	-	S	S	S	-	-	S	-	-	-	-	-	P	-	-	-
M. Motels	-	-	-	S	S	-	-	-	P	P	S	-	-	S	-	-	-
N. Seasonal Residential	-	-	-	-	-	-	-	-	-	S	-	-	-	-	S	S	-
O. Clubs	-	-	S	S	P	-	-	S	P	P	S	-	-	S	-	-	-
P. Civic	S	P	P	P	P	P	P	S	P	S	S	-	-	S	S	-	-
Q. Public Service	-	-	-	-	-	-	-	-	S	S	-	S	P	-	-	S	-
R. Utility Stations	P	P	P	P	S	P	P	S	S	P	S	P	P	S	S	S	-
S. Recreational: ¹	P	P	P	P	S	S	P	S	-	S	S	S	-	-	P	-	-
T. Recreational: ²	S	P	P	P	S	P	P	-	-	S	S	S	S	S	P	S	-

SCHEDULE OF USE REGULATIONS

KEY: P - Permitted Use
S - Special Development
A - Accessory Use

RESIDENTIAL USE GROUPS	RESIDENTIAL										BUSINESS			INDUSTRIAL			OTHER		
	R-1	R-2	R-3	R-4	R-5	R-6	R-7	B-1	B-2	B-3	B-4	M-1	M-2	I	S	TZ	L		
U. Public Institutional and Cultural	S	S	S	P	P	S	S	S	S	S	S	S	S	P	S	S	-		
V. Major Educational	-	-	-	-	S	S	-	-	-	-	-	-	-	-	-	-	-		
W. Agricultural	-	-	-	-	-	-	-	S	-	P	P	P	P	P	S	P	-		
X. Greenhouse	-	-	-	S	-	-	-	S	S	S	S	S	S	S	S	-	-		
Y. Cemetery	-	S	-	S	-	-	S	-	-	-	-	S	-	-	-	P	-		
Z. Parking Lots	S	S	S	S	P	S	S	P	P	P	P	P	P	P	S	S	-		

FOOTNOTES:
 1. Public and quasi-public
 2. Private
 3. Temporary Occupancy

KEY: P - Permitted Use
S - Special Development
A - Accessory Use

SCHEDULE OF USE REGULATIONS

NON-RESIDENTIAL USE GROUPS	RESIDENTIAL										BUSINESS				INDUSTRIAL			OTHER		
	R-1	R-2	R-3	R-4	R-5	R-6	R-7	B-1	B-2	B-3	B-4	M-1	M-2	I	S	TZ	L			
A. Daily Retail	-	-	-	S	S	-	-	P	P	P	P	S	-	S	-	-	-	-		
B. Convenience Goods	-	-	-	-	S	-	-	P	P	P	P	-	-	-	-	-	-	-		
C. Shopper Common Goods	-	-	-	-	-	-	-	-	P	P	P	-	-	-	-	-	-	-		
D. Shopper Occasional Goods	-	-	-	-	-	-	-	-	P	P	P	-	-	-	-	-	-	-		
E. Home Furnishings	-	-	-	-	-	-	-	-	P	P	P	-	-	-	-	-	-	-		
F. Restaurants	-	-	-	-	S	-	-	-	P	P	P	S	-	S	-	-	-	-		
G. Restaurants (Drive-In)	-	-	-	-	-	-	-	-	-	S	S	S	-	-	-	-	-	-		
H. Entertainment (Public)	-	-	-	-	-	-	-	-	P	S	S	S	-	-	-	-	-	-		
I. Open Air Recreation	-	-	-	-	-	-	-	-	-	P	S	S	-	-	-	-	-	-		
J. Daily Services	-	-	-	-	S	-	-	P	P	P	P	S	-	S	-	-	-	-		
K. Office Services	-	-	-	-	-	-	-	P	P	P	P	S	-	S	-	-	-	-		
L. Medical Services	-	-	-	-	S	-	-	-	P	P	P	S	-	S	-	-	-	-		
M. Household Goods - Repair Services	-	-	-	-	-	-	-	-	S	P	S	P	S	-	-	-	-	-		
N. Home Improvement Services	-	-	-	-	-	-	-	-	S	P	S	P	S	-	-	-	-	-		
O. Supplies	-	-	-	-	-	-	-	-	S	P	S	P	S	-	-	-	-	-		
P. Automotive and Farm Implement	-	-	-	-	-	-	-	-	S	S	S	S	P	-	-	-	-	-		
Q. Automotive Service	-	-	-	-	-	-	-	S	S	P	S	S	S	-	-	-	-	-		
R. Animal Services	-	-	-	-	-	-	-	-	-	S	S	S	S	-	-	-	-	-		
S. Mortuary	-	-	S	S	S	-	-	-	S	S	S	S	S	-	S	S	-	-		
T. Parking	-	-	-	S	S	-	-	S	P	P	P	P	P	S	-	-	-	-		

SCHEDULE OF USE REGULATIONS

**KEY: P - Permitted Use
S - Special Development
A - Accessory Use**

NON-RESIDENTIAL USE GROUPS	RESIDENTIAL								BUSINESS				INDUSTRIAL			OTHER		
	R-1	R-2	R-3	R-4	R-5	R-6	R-7	B-1	B-2	B-3	B-4	M-1	M-2	I	S	TZ	L	
	U. Terminals	-	-	-	-	-	-	-	-	P	P	S	P	S	AS	-	-	-
V. Printing Trades	-	-	-	-	-	-	-	-	P	P	S	P	P	-	-	-	-	
W. Cleaning	-	-	-	-	-	-	-	-	P	P	S	P	P	-	-	-	-	
X. Extractive and Recovery Industry	-	-	-	-	-	-	-	-	-	-	-	-	S	-	-	S	-	
Y. Manufacturing - Light Assembly	-	-	-	-	-	-	-	-	-	-	-	P	P	-	-	-	-	
Z. Figurines	-	-	-	-	-	-	-	-	-	-	-	P	P	-	-	-	-	
AA. Manufacturing- General	-	-	-	-	-	-	-	-	-	-	-	-	P	-	-	-	-	
BB. Manufacturing-Heavy	-	-	-	-	-	-	-	-	-	-	-	-	S	-	-	-	-	
CC. Manufacturing- Primary Production	-	-	-	-	-	-	-	-	-	-	-	-	S	-	-	-	-	
DD. Manufacturing- Special Process	-	-	-	-	-	-	-	-	-	-	-	-	S	-	-	-	-	
EE. Transient Amusement	-	-	-	-	-	-	-	-	-	-	-	-	-	-	-	S	-	
FF. Railroad Right-of-Way	-	-	-	-	-	-	-	-	P	P	P	P	P	S	-	P	-	
GG. Warehouse	-	-	-	-	-	-	-	-	-	P	-	S	P	-	-	-	-	
HH. Pet Stores	-	-	-	-	-	-	-	-	S	S	S	S	-	-	-	S	-	
II. Adult Oriented Businesses	-	-	-	-	-	-	-	-	-	-	-	S	-	-	-	-	-	
JJ. Contractor Yard	-	-	-	-	-	-	-	-	-	-	-	-	S	-	-	-	-	

('69 Code, Ch. 7 App. Table 5) (Am. Ord. 600, eff. 11-27-76; Am. Ord. 603, eff. 1-22-79; Am. Ord. 773, passed 1-13-92; Am. Ord. 820, passed 3-25-96; Am. Ord. 822, passed 4-8-96; Am. Ord. 829, passed 2-24-97; Am. Ord. 846, passed 9-8-97; Am. Ord. 852, passed 1-12-98; Am. Ord. 870, passed 10-12-98; Am. Ord. 933, passed 2-11-02)

TABLE OF USE GROUPS

PART I. RESIDENTIAL AND OTHER USE GROUPS

- A. SINGLE FAMILY - Single family detached dwellings.
- B. TOWNHOUSE - Single family attached and detached dwellings.
- C. TWO FAMILY - Two family dwellings.
- D. MULTI-FAMILY - Dwellings designed to contain more than two families.
- E. MOBILE HOME - Mobile home parks.
- F. HOME OCCUPATIONS
- G. BOARDING HOUSES
- H. GUEST HOME
- I. FRATERNITY AND SORORITY HOUSES
- J. CHILD CARE - Nursery schools, child care centers (not including dormitories), and family and group day care centers.
- K. CONVALESCENT, NURSING, AND REST HOMES
- L. HOSPITALS
- M. MOTELS - Hotels, motels and apartment hotels
- N. SEASONAL RESIDENTIAL - Summer cabins, camps, cottages and travel trailer parks, for seasonal and not permanent or year-around occupancy, temporary occupancy
- O. CLUBS - Clubs, fraternities, lodges and meeting places for other organizations, not including any use that is customarily conducted as a gainful business
- P. CIVIC - Convention center, community center, public library, public museum, public art gallery, public recreation, fire station, public botanical garden, public auditorium and similar uses, each without outdoor storage
- Q. PUBLIC SERVICE - Warehouses, garages, storage yards and shops that are owned and operated by a governmental unit, together with accessory administrative buildings

- R. UTILITY STATIONS - Static transformer stations, booster station, transmitters and other utility stations, when operating requirements necessitate locating in districts as determined by the Zoning Administrator
- S. RECREATIONAL (Public and Quasi-Public) - Public parks, playgrounds, recreation and community center buildings and grounds; golf courses, country clubs, tennis courts and similar recreational uses, all of a non-commercial nature
- T. RECREATIONAL (Private) - Private non-commercial recreation areas and facilities not listed above, including swimming pools, country club, and tennis club
- U. PUBLIC INSTITUTIONAL AND CULTURAL - Public, parochial and other private elementary, junior high or high school offering courses in general education, and not operated for profit. Churches, temples and other places of worship, monasteries, convents, rectories and parsonages, including church schools, public libraries, public museums, public art galleries and similar public cultural uses
- V. MAJOR EDUCATIONAL - Colleges, universities and seminaries, book stores, computer service centers, fraternity and sorority houses, dormitories and similar uses
- W. AGRICULTURAL - Outdoor nurseries, forestry, sod farming and crop farming
- X. GREENHOUSES - Nurseries, greenhouses
- Y. CEMETERY - Cemeteries and mausoleums
- Z. PARKING LOTS - Automobile parking lots and garages, excluding repair and parking of trucks, buses equipment and goods
('69 Code, Ch. 7 App. Table 5) (Am. Ord. 820, passed 3-25-96; Am. Ord. 822, passed 4-8-96)

PART II. NON-RESIDENTIAL USE GROUPS

- A. **DAILY RETAIL** - Any retail business supplying daily needs and commodities primarily for residents of the adjoining neighborhood, such as drugs, grocery, liquor for consumption off the premises, meats excluding slaughtering, and bakery and candy stores, including the baking and processing of food products when prepared for retail sale on the premises
- B. **CONVENIENCE GOODS** - Any retail business supplying only daily need commodities for the residents of the surrounding neighborhoods, such as supermarkets, drug stores, florists, gift and card, book and stationery, hardware, paint and wallpaper, coins and philately, cosmetics and perfume, hobbies and toys, office supplies, tobacco shops, photographic supply and cold storage lockers, excluding slaughtering
- C. **SHOPPER COMMON GOODS** - Such as apparel, variety, jewelry, shoes, and dry goods
- D. **SHOPPER OCCASIONAL GOODS** - Such as leather, luggage, furs and foundation ware
- E. **HOME FURNISHINGS** - Such as furniture, appliances, floor covering, draperies
- F. **RESTAURANTS** - Restaurants, cafes, delicatessens and tea rooms, but not including entertainment, dancing, alcoholic beverages not consumed with a meal or drive-in restaurants
- G. **RESTAURANTS (DRIVE-IN)** - Drive-in eating and drinking
- H. **ENTERTAINMENT (PUBLIC)** - Bars, taverns, cocktail lounges, night clubs, theaters, billiard parlors, pool halls, bowling alleys and massage parlors
- I. **OPEN AIR RECREATION** - Any type of commercial recreation including golf driving ranges, drive-in theaters, swimming pools, skating rinks, tennis clubs, but excluding auto race tracks
- J. **DAILY SERVICES** - Any service establishment performing services primarily for residents of the adjoining neighborhood such as a barber, beautician, self-service laundries, clothes cleaning and laundry pickup stations, shoe repair and shine, and tailor shops
- K. **OFFICE SERVICES** - Public and private offices, banks and financial, post office (not major distribution), utility office and collection, and photographers
- L. **MEDICAL SERVICES (EXCLUDING NON-HUMAN)** - Medical clinic, optometrist, optical services, and chiropody
- M. **HOUSEHOLD GOODS REPAIR SERVICES** - Including sales, parts and repair but not including appliance assembly or manufacturing, upholstery, watch and clock repair, locksmith, or pawn shop

- N. HOME IMPROVEMENT SERVICES - Carpenter shops, plumbing and heating repair, painting and paper hanging shops, janitorial services, excluding contractor yards
- O. SUPPLIES - Farm, feed and seed supply, lumber yards and lawn and gardening supplies
- P. AUTOMOTIVE AND FARM IMPLEMENT - Automotive sales, parts, repair or for hire, auto accessories, auto auction, used car lots, farm implement sales, parts and repair, recreation vehicle sales, parts and repair, mobile home sales and storage
- Q. AUTOMOTIVE SERVICE - Gas stations and car wash
- R. ANIMAL SERVICES - Kennels, animal hospitals, veterinarian clinics, animal auction, livestock buying and selling, extermination and pounds
- S. MORTUARY
- T. PARKING - Automobile parking lots and garages, excluding repairs
- U. TERMINALS - Ambulance and taxi service, bus, rail and rotocraft terminals excluding motor freight
- V. PRINTING TRADES - Publishing, job printing, lithographing, blue printing
- W. CLEANING - Clothes cleaning and dyeing, diaper service, laundries, linen supply and carpet and rug cleaning
- X. EXTRACTIVE AND RECOVERY INDUSTRY - This group includes the mining, quarrying, excavation, processing, storing, separating, cleaning or marketing of natural resources such as sand, gravel, earth, peat, coal, minerals, gas, and oil, etc., the establishment or operation of junk yards or the salvaging or reclamation of materials
- Y. MANUFACTURING - LIGHT ASSEMBLY - The manufacturing, compounding, assembling or treatment of products from the following previously prepared materials, bone, canvas, cellophane, cloth, cork, feathers, felt, fibre, fur, glass, hair, leather (tanned), horn, paper, plastics, precious or semi-precious metals or stones, sheet metal, shell, textiles, tobacco, wax, wood (except saw and planing mills) and yarns
- Z. FIGURINES - The manufacture of pottery, figurines or other similar products, using only previously pulverized clay, and kilns fired only by electricity or gas
- AA. MANUFACTURING - GENERAL - Any manufacturing use meeting performance standards (and not listed separately under MANUFACTURING: HEAVY, PRODUCTION, OR SPECIAL PROCESS)

- BB. MANUFACTURING, HEAVY - The manufacturing of acetylene in excess of 15 pounds pressure psi; and acid; asbestos; asphalt and concrete mixing but not manufacturing; automobile assembly; bleaching, cleaning and dyeing plant brewing or distilling of liquors, brick, pottery, tile and terra cotta manufacturing; petroleum bulk station; candle or sperm oil manufacturing; disinfectant, insecticide or poison manufacturing; crematory; cooperage works dextrine, starch or glucose manufacturing; emery cloth or sandpaper manufacturing; felt manufacturing; flour or grain mill; forge or foundry works; hair or hair products manufacturing; lime or lime products manufacturing; linoleum, oil cloth or oiled goods manufacturing; match manufacturing; meat packing, stockyards or slaughterhouses; paper and pulp manufacturing; perfume manufacturing; pickle, sauerkraut or sausage manufacturing; plaster manufacturing; poultry slaughter-house, including packing and storage for wholesale; printing ink manufacturing; radium products; sewage treatment plant; shoddy manufacturing; shoe blacking or polish manufacturing; steel fabrication; steam power plant, except where accessory to a permitted principal use; and stone and monument works
- CC. MANUFACTURING - PRIMARY PRODUCTION - Manufacturing uses involving primary production of asphalt, cement, charcoal and fuel briquettes; aniline dyes; ammonia, carbide, caustic soda, cellulose, chlorine, carbon black and bone black, creosote hydrogen, and oxygen, industrial alcohol, nitrates of an explosive nature, potash, plastic materials, and synthetic resins, pyroxylin, rayon yarn, and hydrochloric, nitric, phosphoric, picric, and sulphuric acids; coal, coke, and tar products, including gas manufacturing; explosive, fertilizers, gelatine, animal glue and size; turpentine, rubber soaps, including fat rendering
- DD. MANUFACTURING - SPECIAL PROCESS - The processes of nitrating of cotton or other materials; magnesium foundry; reduction, refining, smelting, and alloying of metal or metal ores; slag piles, refining petroleum products, such as gasoline, kerosene, naphtha, lubricating oil, distillation of wood or bones; storage, curing or tanning of raw, green or salted hides or skins
- EE. TRANSIENT AMUSEMENT - Circus, carnivals and other transient amusement enterprises, auto race tracks and county fairs
- FF. RAILROAD RIGHT-OF-WAY - Railroad right-of-way but not including terminals, transfer and storage tracks, nor accessory structures except incidentally provided for communication or switching equipment
- GG. WAREHOUSE - Wholesale warehouse and motor freight terminals
- HH. PET STORES
- II. ADULT ORIENTED BUSINESS
- JJ. CONTRACTOR YARD
- ('69 Code, Ch. 7 App. Table 5) (Am. Ord. 773, passed 1-13-92; Am. Ord. 829, passed 2-24-97; Am. Ord. 870, passed 10-12-98)

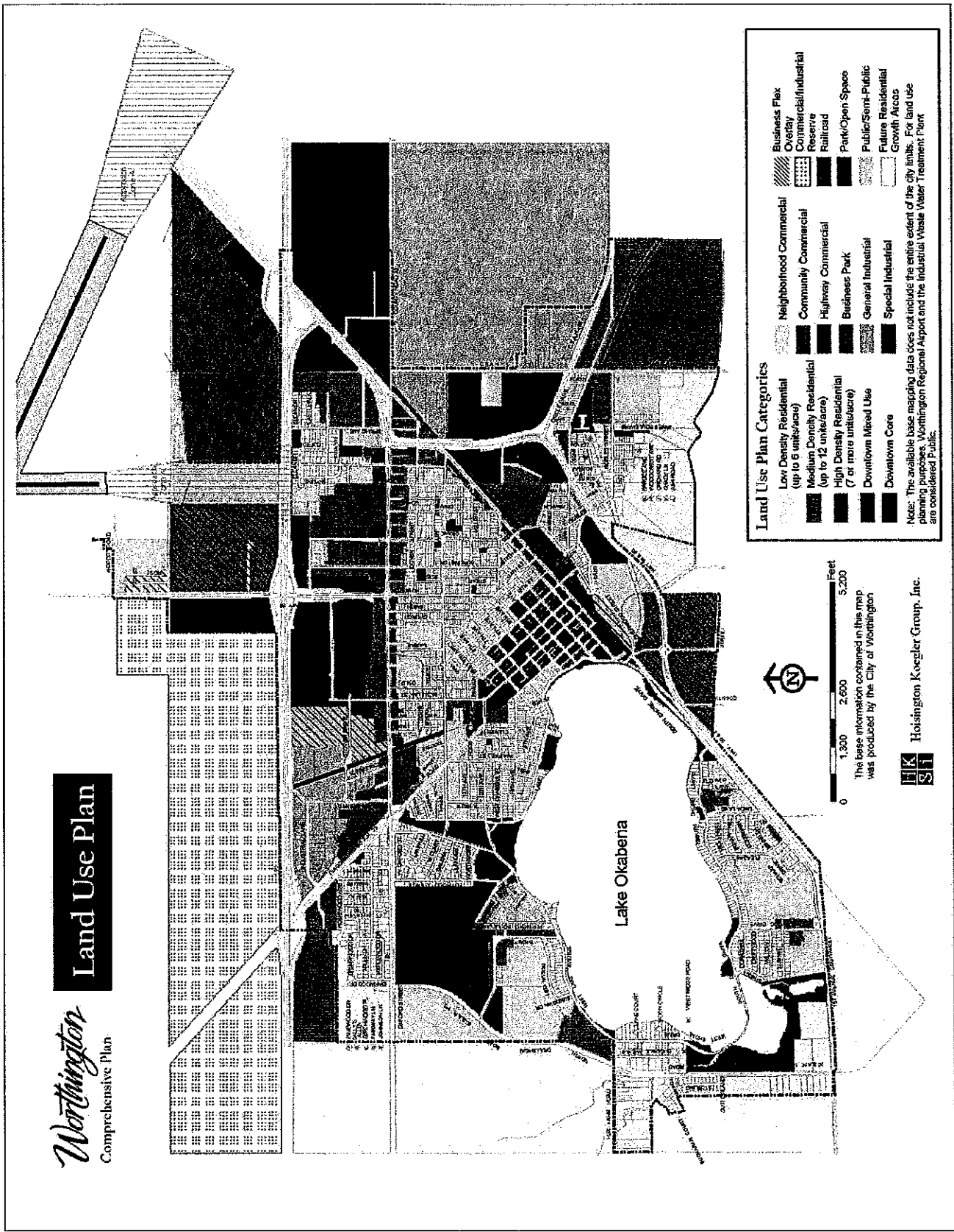


Figure 2-4
Land Use Plan

Land Use Map

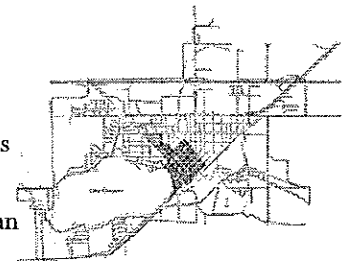
The Land Use Map shows the specific land use assigned to each parcel of land. The Plan as illustrated by this map evolved from input and evaluations received through the planning process. The Plan builds on the existing community pattern to achieve the desired vision for the future of Worthington.

Districts

The Land Use Plan divides Worthington into a series of planning districts. These districts are subareas of the community that share common land use and community development issues. This approach enables the Land Use Plan to provide a more detailed description of the objectives and policies for each district.

Downtown

Downtown is one of the most important districts in the Comprehensive Plan. Downtown defines the character and identity of the community. Downtown blends a mixture of land uses into a functioning and sustainable environment. Downtown provides a unique setting for commercial land uses. It is a collection of smaller retail, service and office uses. These uses can be mutually supportive, attracting people to multiple businesses not just single-purpose trips. The collection of uses and their close relationship creates an environment that is unlikely to be replicated in other commercial districts. Buildings and site design must be uniquely “downtown” and not influenced by highway commercial and suburban form.



Downtown District

The Plan encourages Downtown to serve as the civic core of the community. Currently, Downtown is home to such essential public/semi-public facilities as City Hall, Municipal Utility Offices, County Administration, YMCA, and Nobles County Library. These uses attract people to the Downtown. Each opportunity to visit the Downtown creates market potential for businesses. These uses should remain in the Downtown. New civic uses (such as a community center) should be located in the Downtown when feasible.

As civic uses age, the issue of long-term use becomes an important consideration. Central Elementary School provides an excellent



*Figure 2-5
Land Use Plan - Downtown District*

example of a civic use in transition. This building is no longer used for its original purpose as an elementary school. From the perspective of community character, Central Elementary School is part of the fabric and heritage of Worthington. Neighborhoods grew up and built connections with the school. Many long time residents attended this school. While reusing older elementary schools is a challenge, the Comprehensive Plan encourages maintaining this building. Public/civic uses of the school allow it to remain as a community and neighborhood gathering place. Housing is another potential use. Conversion of the school to housing loses the public aspects, but retains the character of the building.

Health care is a significant factor in the Downtown. The hospital, clinics and related businesses provide many benefits to the Downtown. Health care is a land use issue. The Comprehensive Plan must provide an adequate supply of land to sustain current uses and to provide the capacity for growth. Health care related uses should be encouraged to cluster in the Downtown District. Health care is an economic factor for the Downtown and for the community. The hospital and related businesses bring people into the Downtown, adding to the market for Downtown businesses. Health care related businesses create jobs and tax base. A Downtown location provides the opportunity for these businesses to create a catalyst for redevelopment.

Downtown mixes commercial and residential uses. Residential development in the Downtown district serves several functions.

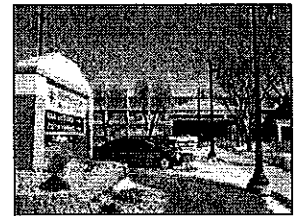
- The residents of Downtown housing provide potential customers for businesses.
- Residents add life to the Downtown.
- Downtown offers goods and services in close proximity to housing.
- Residential development may be a key to undertaking redevelopment.

Downtown is an excellent setting for higher density housing. The street system and adjacent land uses are often compatible with greater density. The location provides access to shopping, entertainment and health care. This housing creates additional economic capacity to facilitate redevelopment.

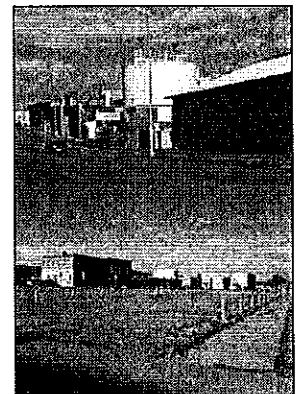
Despite the benefits of housing, it is not suited to every parcel in the Downtown. In commercial oriented locations, residential uses should be limited to second floor (and higher). Housing serves as an effective edge use, a transition between the commercial elements of Downtown and the adjacent residential neighborhoods.

Redevelopment of the ADI/Campbell's site is important to the Downtown and will not occur without city leadership. The facility is physically and economically obsolete with potential environmental issues. While small portions of the facility can be used, the majority of the property requires redevelopment. Without redevelopment, physical deterioration of the buildings will continue. This blight provides a disincentive for investment in this section of the Downtown.

A specific concept for the redevelopment of this property requires further planning and analysis. Continued planning for the ADI/Campbell's property should be guided by the following factors:



The Hospital and health care related businesses are key economic factors for the Downtown.



Redevelopment of the ADI/Campbell's site is an important element of the plan for the Downtown area.

- Industrial uses are not compatible with plans and objectives for the Downtown District.
- The size of the site and the cost of redevelopment increase the necessity for a mixture of uses on this site. The mixture may include retail, entertainment, office and housing. The site also offers potential location for a community center.
- Redevelopment of the site and the adjacent street will create a stronger link between the Lake and Downtown.
- This site is an essential part of building a stronger entry feature to Downtown from Highway 59/60.

Public improvements will play a role in the future development of the Downtown. Streetscape improvements have been made along 10th Street. The broader application of the streetscape beautifies and defines the core area of Downtown. While some form of streetscape should be considered throughout the retail core of the Downtown, attention should be given to the primary entry corridors, including 5th Avenue and 2nd Avenue.

Oxford West

Oxford West is an important commercial and industrial district. There are several different facets of the land use in this district:

- Commercial development along Ryan's Road and Humiston will be oriented to highway business and commercial uses. The highway access at this location supports commercial uses serving travelers and a broader market area.
- Commercial development along Oxford will be smaller in scale and oriented towards community uses. The Comprehensive Plan will encourage reinvestment and redevelopment along Oxford to maintain a strong and positive location for businesses.
- The remainder of the area focuses on promoting the retention and expansion of industrial land uses.

Individual lots and drive define access to the street. Efforts to facilitate redevelopment should explore ways to reduce access points and improve traffic safety.

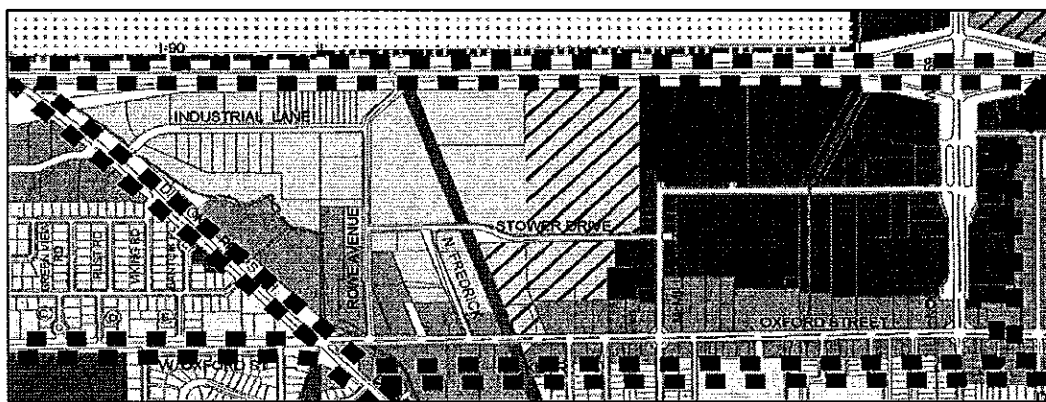
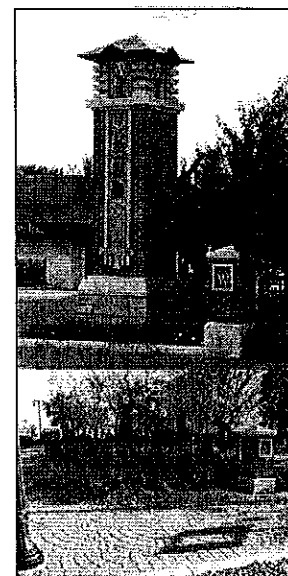
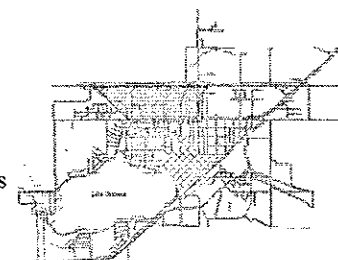


Figure 2-6
Land Use Plan - Oxford West District



Additional streetscape improvements will enhance the character and identity of the Downtown.



Oxford West District

VENDOR SORT KEY	DATE	DESCRIPTION	FUND	DEPARTMENT	AMOUNT
ANDERSON ALIGNMENT SERVICE	2/11/11	HUB CAP PLUGS	GENERAL FUND	PAVED STREETS	7.52
	2/11/11	AXLE SHAFT	GENERAL FUND	ICE AND SNOW REMOVAL	573.55
	2/11/11	BATTERIES, SERVICE CALL	GENERAL FUND	ICE AND SNOW REMOVAL	634.28
	2/11/11	PTO SHAFT, OIL CHANGE, HYD	GENERAL FUND	ICE AND SNOW REMOVAL	227.64
	2/11/11	PTO SHAFT, OIL CHANGE, HYD	GENERAL FUND	ICE AND SNOW REMOVAL	225.58
	2/11/11	PTO SHAFT, OIL CHANGE, HYD	GENERAL FUND	ICE AND SNOW REMOVAL	355.00
	2/11/11	OIL CHANGE, GREASE, 2 MOTO	GENERAL FUND	ICE AND SNOW REMOVAL	141.45
	2/11/11	OIL CHANGE, GREASE, 2 MOTO	GENERAL FUND	ICE AND SNOW REMOVAL	279.81
	2/11/11	OIL CHANGE, GREASE, 2 MOTO	GENERAL FUND	ICE AND SNOW REMOVAL	250.00
	2/11/11	OIL CHANGE, FUEL FILTERS	GENERAL FUND	ICE AND SNOW REMOVAL	100.41
	2/11/11	OIL CHANGE, FUEL FILTERS	GENERAL FUND	ICE AND SNOW REMOVAL	111.60
	2/11/11	OIL CHANGE, FUEL FILTERS	GENERAL FUND	ICE AND SNOW REMOVAL	93.00
	2/11/11	OIL CHANGE, AIR & FUEL FIL	GENERAL FUND	ICE AND SNOW REMOVAL	78.02
	2/11/11	OIL CHANGE, AIR & FUEL FIL	GENERAL FUND	ICE AND SNOW REMOVAL	110.94
	2/11/11	OIL CHANGE, AIR & FUEL FIL	GENERAL FUND	ICE AND SNOW REMOVAL	87.50
	2/11/11	OIL CHANGE, FUEL FILTERS	GENERAL FUND	ICE AND SNOW REMOVAL	104.15
	2/11/11	OIL CHANGE, FUEL FILTERS	GENERAL FUND	ICE AND SNOW REMOVAL	41.86
	2/11/11	OIL CHANGE, FUEL FILTERS	GENERAL FUND	ICE AND SNOW REMOVAL	93.00
	2/11/11	OIL CHANGE, FUEL FILTER	GENERAL FUND	ICE AND SNOW REMOVAL	140.43
	2/11/11	OIL CHANGE, FUEL FILTER	GENERAL FUND	ICE AND SNOW REMOVAL	140.93
	2/11/11	OIL CHANGE, FUEL FILTER	GENERAL FUND	ICE AND SNOW REMOVAL	72.50
	2/11/11	TRANSMISSION, OIL CHANGES	AIRPORT	O-GEN MISC	450.48
	2/11/11	TRANSMISSION, OIL CHANGES	AIRPORT	O-GEN MISC	3,135.49
	2/11/11	TRANSMISSION, OIL CHANGES	AIRPORT	O-GEN MISC	<u>2,645.00</u>
				TOTAL:	10,100.14
ARCTIC ICE INC	2/11/11	MIX	LIQUOR	NON-DEPARTMENTAL	<u>34.10</u>
				TOTAL:	34.10
ARNOLD MOTOR SUPPLY	2/11/11	BATTERY CORE RETURN	RECREATION	GOLF COURSE-GREEN	10.69-
	2/11/11	BATTERY CORE RETURN	ELECTRIC	O-DISTR UNDERGRND LINE	21.38-
	2/11/11	SANDING DISC FOR 101 WORK	ELECTRIC	O-DISTR UNDERGRND LINE	10.67
	2/11/11	SANDING DISC FOR 101 WORK	ELECTRIC	O-DISTR UNDERGRND LINE	9.08
	2/11/11	HOSE FITTING FOR 101	ELECTRIC	O-DISTR UNDERGRND LINE	4.47
	2/11/11	PAINT FOR 101	ELECTRIC	O-DISTR UNDERGRND LINE	6.94
	2/11/11	PAINT FOR 101	ELECTRIC	O-DISTR UNDERGRND LINE	<u>6.94</u>
				TOTAL:	6.03
BAHRS SMALL ENGINE	2/11/11	GAS CAP	RECREATION	TREE REMOVAL	<u>12.22</u>
				TOTAL:	12.22
BELLBOY CORP	2/11/11	MIX	LIQUOR	NON-DEPARTMENTAL	210.74
	2/11/11	FREIGHT	LIQUOR	O-SOURCE MISC	<u>35.12</u>
				TOTAL:	245.86
BEVERAGE WHOLESALERS INC	2/11/11	BEER	LIQUOR	NON-DEPARTMENTAL	800.75
	2/11/11	BEER	LIQUOR	NON-DEPARTMENTAL	5,603.05
	2/11/11	BEER	LIQUOR	NON-DEPARTMENTAL	90.00
	2/11/11	BEER	LIQUOR	NON-DEPARTMENTAL	5,215.90
	2/11/11	BEER	LIQUOR	NON-DEPARTMENTAL	331.65
	2/11/11	BEER	LIQUOR	NON-DEPARTMENTAL	<u>6,846.90</u>
				TOTAL:	18,888.25
BOLTON & MENK INC	2/11/11	PROFESSIONAL FEES	IMPROVEMENT CONST	TH 59 N & BIO DR DESIG	2,475.00
	2/11/11	PROFESSIONAL FEES	IMPROVEMENT CONST	TH 59 N & BIO DR DESIG	<u>4,307.00</u>
				TOTAL:	6,782.00

VENDOR SORT KEY	DATE	DESCRIPTION	FUND	DEPARTMENT	AMOUNT
BOUSEMA FARMS, INC	2/11/11	SNOW REMOVAL	GENERAL FUND	ICE AND SNOW REMOVAL	<u>1,050.00</u>
				TOTAL:	1,050.00
BTU INC	2/11/11	SERVICE CALL FOR HEATER	RECREATION	GOLF COURSE-GREEN	71.80
	2/11/11	FURNACE AT OLSON PARK	RECREATION	OLSON PARK CAMPGROUND	270.07
	2/11/11	FURNACE AT OLSON PARK	RECREATION	OLSON PARK CAMPGROUND	<u>175.00</u>
				TOTAL:	516.87
BUETOW AND ASSOCIATES INC	2/11/11	ARCHITECTURAL SERVICES	GENERAL FUND	FIRE ADMINISTRATION	<u>19,200.00</u>
				TOTAL:	19,200.00
BURNS LOCK & KEY	2/11/11	TRANSPONDER KEY	GENERAL FUND	PAVED STREETS	<u>72.75</u>
				TOTAL:	72.75
CHUCK WAGON VENDING INC	2/11/11	2 CASES COFFEE	GENERAL FUND	SECURITY CENTER	34.00
	2/11/11	2 CASES COFFEE	GENERAL FUND	SECURITY CENTER	<u>34.00</u>
				TOTAL:	68.00
CLARITUS	2/11/11	POSTAGE MACHINE SUPPLIES	DATA PROCESSING	COPIER/FAX	<u>64.34</u>
				TOTAL:	64.34
COCA-COLA ENTERPRISES-MIDWEST DIVISION	2/11/11	MIX	LIQUOR	NON-DEPARTMENTAL	<u>254.40</u>
				TOTAL:	254.40
CON-WAY	2/11/11	SHIPPING CABANK TO MAYSTE	ELECTRIC	M-DISTR UNDERGRND LINE	<u>350.22</u>
				TOTAL:	350.22
COOPERATIVE ENERGY CO	2/11/11	PREMIUM NL	GENERAL FUND	ICE AND SNOW REMOVAL	7.01
	2/11/11	QWIKLIFT HTB 2-10 QT	GENERAL FUND	ICE AND SNOW REMOVAL	64.77
	2/11/11	AUTO GOLD HMO 10W40	RECREATION	PARK AREAS	6.49
	2/11/11	SUPERLUBE TMS 10W30	RECREATION	PARK AREAS	82.85
	2/11/11	PREMIUM NL	LIQUOR	O-GEN MISC	<u>35.27</u>
				TOTAL:	196.39
ROXANNE M CRAYFORD	2/11/11	JANUARY CLEANING	COMMUNITY CTR/GRAN	COMMUNITY CENTER	<u>130.00</u>
				TOTAL:	130.00
CRYSSTEEL TRUCK EQUIPMENT INC	2/11/11	CABLE FOR LIFT GATE 106	ELECTRIC	O-DISTR UNDERGRND LINE	<u>55.69</u>
				TOTAL:	55.69
CULLIGAN WATER COND CO	2/11/11	MONTHLY SERVICE	GENERAL FUND	GENERAL GOVT BUILDINGS	66.00
	2/11/11	MONTHLY SERVICE	GENERAL FUND	OTHER GEN GOVT MISC	48.00
	2/11/11	MONTHLY SERVICE	GENERAL FUND	FIRE ADMINISTRATION	11.00
	2/11/11	MONTHLY SERVICE	GENERAL FUND	PAVED STREETS	5.00
	2/11/11	MONTHLY SERVICE	WATER	O-DISTR MISC	18.00
	2/11/11	MONTHLY SERVICE	MUNICIPAL WASTEWAT	O-SOURCE MAINS & LIFTS	18.00
	2/11/11	MONTHLY SERVICE	ELECTRIC	ACCTS-RECORDS & COLLEC	<u>48.00</u>
				TOTAL:	214.00
DACOTAH PAPER CO	2/11/11	BAGS	LIQUOR	O-GEN MISC	<u>206.80</u>
				TOTAL:	206.80
DAILY GLOBE	2/11/11	ONLINE ADS	GENERAL FUND	MAYOR AND COUNCIL	60.00
	2/11/11	SUMMARY BUDGET	GENERAL FUND	AUDITS AND BUDGETS	925.96
	2/11/11	PLANNING COMMISSION	GENERAL FUND	ECONOMIC DEVELOPMENT	362.81
	2/11/11	THIN ICE ADS	GENERAL FUND	LAKE IMPROVEMENT	<u>652.08</u>

VENDOR SORT KEY	DATE	DESCRIPTION	FUND	DEPARTMENT	AMOUNT
	2/11/11	WATER COLOR CLASS	COMMUNITY CTR/GRAN	COMMUNITY CENTER	96.00
	2/11/11	MILLARD WALKER RESTROOM	RECREATION	PARK AREAS	303.24
	2/11/11	BRIDAL SHOW AD	LIQUOR	O-GEN MISC	<u>99.63</u>
				TOTAL:	2,499.72
DAVIS TYPEWRITER CO INC	2/11/11	LEGAL PADS	GENERAL FUND	CLERK'S OFFICE	6.89
	2/11/11	5 DRAWER FILE CABINET	GENERAL FUND	ENGINEERING ADMIN	464.09
	2/11/11	FOLDERS, ENVELOPES, LABELS	GENERAL FUND	ENGINEERING ADMIN	43.11
	2/11/11	STAMP	GENERAL FUND	ENGINEERING ADMIN	5.56
	2/11/11	FOLDERS, ENVELOPES, LABELS	GENERAL FUND	ECONOMIC DEVELOPMENT	43.11
	2/11/11	BATTERIES	GENERAL FUND	ECONOMIC DEVELOPMENT	18.36
	2/11/11	NOTE CARDS	GENERAL FUND	FIRE ADMINISTRATION	81.39
	2/11/11	INK CARTRIDGE, LETTER POU	GENERAL FUND	PAVED STREETS	29.07
	2/11/11	STORAGE BOXES	WATER	ADMIN OFFICE SUPPLIES	12.63
	2/11/11	STORAGE BOXES	MUNICIPAL WASTEWAT	ADMIN OFFICE SUPPLIES	12.62
	2/11/11	STORAGE BOXES	ELECTRIC	ADMIN OFFICE SUPPLIES	25.26
	2/11/11	STACKABLE TRAY	ELECTRIC	ACCTS-RECORDS & COLLEC	2.92
	2/11/11	ICE MELT, BLACK THERMAL SH	LIQUOR	O-GEN MISC	120.07
	2/11/11	LABELER	LIQUOR	O-GEN MISC	37.61
	2/11/11	STAPLES, TONER CARTRIDGE,	DATA PROCESSING	DATA PROCESSING	120.10
	2/11/11	PRINTER CARTRIDGE	DATA PROCESSING	DATA PROCESSING	<u>84.21</u>
				TOTAL:	1,107.00
DEPARTMENT OF FINANCE	2/11/11	VOSS ADMIN FORFEITURE	PD TASK FORCE	BUFFALO RIDGE DRUG TAS	222.00
	2/11/11	LIENES ADMIN FORFEITURE	PD TASK FORCE	BUFFALO RIDGE DRUG TAS	260.50
	2/11/11	CHANTHARATH/KRUSE	PD TASK FORCE	BUFFALO RIDGE DRUG TAS	613.03
	2/11/11	INSIXIENGMAY ADMIN FORFEIT	PD TASK FORCE	BUFFALO RIDGE DRUG TAS	<u>17.00</u>
				TOTAL:	1,112.53
DIAMOND VOGEL PAINT	2/11/11	PAINT	MEMORIAL AUDITORIUM	MEMORIAL AUDITORIUM	<u>12.80</u>
				TOTAL:	12.80
DR PEPPER SNAPPLE GROUP	2/11/11	MIX	LIQUOR	NON-DEPARTMENTAL	<u>124.90</u>
				TOTAL:	124.90
ECHO GROUP INC	2/11/11	FLUORESCENT BULBS	GENERAL FUND	PAVED STREETS	49.70
	2/11/11	BATTERY FOR FIRE ALARM	ELECTRIC	O-SOURCE MISC	49.63
	2/11/11	LOCK OUT TAGS	ELECTRIC	O-DISTR MISC	57.14
	2/11/11	IGNITER FOR STREET LIGHTS	ELECTRIC	M-DISTR ST LITE & SIG	40.76
	2/11/11	PVC FITTINGS	ELECTRIC	FA DISTR UNDRGRND COND	492.81
	2/11/11	LED STREET LIGHT	ELECTRIC	FA DISTR ST LITE & SIG	<u>819.13</u>
				TOTAL:	1,509.17
FASTENAL COMPANY	2/11/11	EAR PLUGS, DUST MASKS	RECREATION	GOLF COURSE-GREEN	96.71
	2/11/11	TRASH CANS	RECREATION	PARK AREAS	35.42
	2/11/11	SAFETY VESTS, SHIRTS, EAR	SAFETY PROMO/LOSS	HEALTH/SAFETY/FITNESS	<u>2,317.47</u>
				TOTAL:	2,449.60
GRAHAM TIRE OF WORTHINGTON INC	2/11/11	TIRE PATCH	AIRPORT	O-GEN MISC	2.14
	2/11/11	TIRE PATCH	AIRPORT	O-GEN MISC	<u>13.00</u>
				TOTAL:	15.14
HAGEN BEVERAGE DISTRIBUTING INC	2/11/11	BEER	LIQUOR	NON-DEPARTMENTAL	242.50
	2/11/11	BEER	LIQUOR	NON-DEPARTMENTAL	1,747.75
	2/11/11	BEER	LIQUOR	NON-DEPARTMENTAL	4,069.20
	2/11/11	BEER	LIQUOR	NON-DEPARTMENTAL	<u>6,524.70</u>

VENDOR SORT KEY	DATE	DESCRIPTION	FUND	DEPARTMENT	AMOUNT
	2/11/11	MIX	LIQUOR	NON-DEPARTMENTAL	124.50
	2/11/11	BEER	LIQUOR	NON-DEPARTMENTAL	4,651.80
	2/11/11	BEER	LIQUOR	NON-DEPARTMENTAL	3,091.90
	2/11/11	BEER	LIQUOR	NON-DEPARTMENTAL	724.75
	2/11/11	BEER	LIQUOR	NON-DEPARTMENTAL	4,910.90
	2/11/11	MIX	LIQUOR	NON-DEPARTMENTAL	42.00
	2/11/11	SUPPLIES	LIQUOR	O-GEN MISC	<u>57.50</u>
				TOTAL:	26,187.50
HENKELS KELLY	2/11/11	REIMBURSE ART CLASS SUPPLI	COMMUNITY CTR/GRAN	COMMUNITY CENTER	<u>55.84</u>
				TOTAL:	55.84
HY-VEE INC-61609	2/11/11	SUPPLIES	WATER	ACCTS-RECORDS & COLLEC	2.04
	2/11/11	SUPPLIES	MUNICIPAL WASTEWAT	ACCT-RECORDS & COLLECT	2.05
	2/11/11	SUPPLIES	ELECTRIC	ACCTS-RECORDS & COLLEC	<u>4.06</u>
				TOTAL:	8.15
HY-VEE INC-61705	2/11/11	MIX	LIQUOR	NON-DEPARTMENTAL	19.00
	2/11/11	MIX	LIQUOR	NON-DEPARTMENTAL	18.00
	2/11/11	GLASS CLEANER, PAPER TOWEL	LIQUOR	O-GEN MISC	<u>61.72</u>
				TOTAL:	98.72
IDE@S	2/11/11	2 PLANTRONICS HEADSETS	GENERAL FUND	SECURITY CENTER	21.36
	2/11/11	2 PLANTRONICS HEADSETS	GENERAL FUND	SECURITY CENTER	<u>21.37</u>
				TOTAL:	42.73
INTEGRITY AVIATION INC	2/11/11	JANUARY FBO MANAGEMENT FEE	AIRPORT	O-GEN MISC	<u>1,995.00</u>
				TOTAL:	1,995.00
J & K WINDOWS	2/11/11	WINDOW CLEANING	LIQUOR	O-GEN MISC	<u>60.00</u>
				TOTAL:	60.00
JANITOR'S CLOSET LTD	2/11/11	VACCUUM BAGS	MEMORIAL AUDITORIU	MEMORIAL AUDITORIUM	<u>29.89</u>
				TOTAL:	29.89
JAYCOX IMPLEMENT INC	2/11/11	KUBOTA PARTS	RECREATION	PARK AREAS	19.61
	2/11/11	SNOWBLOWER PARTS	RECREATION	PARK AREAS	41.80
	2/11/11	KUBOTA PARTS	RECREATION	PARK AREAS	104.91
	2/11/11	SNOWBLOWER COUPLER	RECREATION	PARK AREAS	41.80
	2/11/11	CASE TRACTOR PARTS	RECREATION	PARK AREAS	<u>18.65</u>
				TOTAL:	226.77
JERRY'S AUTO SUPPLY	2/11/11	GREASE	GENERAL FUND	PAVED STREETS	3.24
	2/11/11	LAMP	GENERAL FUND	PAVED STREETS	9.39
	2/11/11	BELT	GENERAL FUND	PAVED STREETS	11.08
	2/11/11	PART	GENERAL FUND	ICE AND SNOW REMOVAL	1.78
	2/11/11	FITTING	GENERAL FUND	ICE AND SNOW REMOVAL	3.62
	2/11/11	SEAL BEARING	GENERAL FUND	ICE AND SNOW REMOVAL	8.37
	2/11/11	BULBS	GENERAL FUND	ICE AND SNOW REMOVAL	<u>27.76</u>
				TOTAL:	65.24
JOHNSON BROTHERS LIQUOR CO	2/11/11	WINE	LIQUOR	NON-DEPARTMENTAL	1,208.45
	2/11/11	LIQUOR	LIQUOR	NON-DEPARTMENTAL	8,667.18
	2/11/11	WINE	LIQUOR	NON-DEPARTMENTAL	1,934.50
	2/11/11	WINE	LIQUOR	NON-DEPARTMENTAL	125.94
	2/11/11	LIQUOR	LIQUOR	NON-DEPARTMENTAL	<u>929.27</u>

VENDOR SORT KEY	DATE	DESCRIPTION	FUND	DEPARTMENT	AMOUNT
	2/11/11	WINE	LIQUOR	NON-DEPARTMENTAL	<u>722.70</u>
				TOTAL:	13,588.04
THE JOSEPH COMPANY INC	2/11/11	MEMORIAL AUD RENOVATION	EVENT CENTER/AUDIT	NON-DEPARTMENTAL	5,516.30-
	2/11/11	MEMORIAL AUD RENOVATION	EVENT CENTER/AUDIT	MEMORIAL AUDITORIUM	<u>110,326.00</u>
				TOTAL:	104,809.70
KARLS CARQUEST AUTO PARTS INC	2/11/11	SWITCH-GEHL SKIDLOADER	GENERAL FUND	PAVED STREETS	11.24
	2/11/11	OIL FILTER-MULE	RECREATION	PARK AREAS	7.08
	2/11/11	WIPER BLADE	AIRPORT	O-GEN MISC	<u>9.13</u>
				TOTAL:	27.45
KOLANDER BRIAN	2/11/11	REIMBURSE EHLERS CONFERENC	GENERAL FUND	ACCOUNTING	<u>257.04</u>
				TOTAL:	257.04
KORTHALS BOBBIE	2/11/11	REIMBURSE SR CENTER DECORA	COMMUNITY CTR/GRAN	COMMUNITY CENTER	<u>10.94</u>
				TOTAL:	10.94
KRUSE MOTORS OF WORTHINGTON INC	2/11/11	TOW	GENERAL FUND	POLICE ADMINISTRATION	65.00
	2/11/11	TOW ELSINGS CAR TO VIRGIL	GENERAL FUND	POLICE ADMINISTRATION	45.00
	2/11/11	TOW	GENERAL FUND	POLICE ADMINISTRATION	65.00
	2/11/11	TOW	GENERAL FUND	POLICE ADMINISTRATION	<u>53.69</u>
				TOTAL:	228.69
LAMETTI & SONS INC	2/11/11	'10 TRUNK SANITARY & STORM	MUNICIPAL WASTEWAT	NON-DEPARTMENTAL	330.00-
	2/11/11	'10 TRUNK SANITARY & STORM	MUNICIPAL WASTEWAT	PROJECT #11	6,600.00
	2/11/11	'10 TRUNK SANITARY & STORM	STORM WATER MANAGE	NON-DEPARTMENTAL	350.00-
	2/11/11	'10 TRUNK SANITARY & STORM	STORM WATER MANAGE	PROJECT #12	<u>7,000.00</u>
				TOTAL:	12,920.00
LAMPERTS YARDS INC-2602004	2/11/11	NUTSETTER	GENERAL FUND	PAVED STREETS	<u>3.73</u>
				TOTAL:	3.73
LARSON CRANE SERVICE INC	2/11/11	HAUL SNOW	GENERAL FUND	ICE AND SNOW REMOVAL	<u>900.00</u>
				TOTAL:	900.00
LEAGUE OF MN CITIES INSURANCE TRUST	2/11/11	INSURANCE CLAIM #11075387	SAFETY PROMO/LOSS	HEALTH/SAFETY/FITNESS	<u>429.33</u>
				TOTAL:	429.33
LOCATORS & SUPPLIES INC	2/11/11	SAFETY VEST	ELECTRIC	O-DISTR MISC	<u>94.29</u>
				TOTAL:	94.29
MAC QUEEN EQUIPMENT INC	2/11/11	BACK UP PLATE	AIRPORT	O-GEN MISC	140.49
	2/11/11	CREDIT BACK UP PLATE	AIRPORT	O-GEN MISC	<u>127.80</u>
				TOTAL:	12.69
MATHISON COMPANY	2/11/11	20# BOND PAPER	GENERAL FUND	ENGINEERING ADMIN	<u>22.57</u>
				TOTAL:	22.57
MID AMERICAN SPECIALTIES INC	2/11/11	PROMOTIONAL PENCILS	GENERAL FUND	POLICE ADMINISTRATION	<u>468.62</u>
				TOTAL:	468.62
MINNESOTA ENERGY RESOURCES CORP	2/11/11	GAS SERVICE	GENERAL FUND	GENERAL GOVT BUILDINGS	1,361.23
	2/11/11	GAS SERVICE	GENERAL FUND	FIRE ADMINISTRATION	1,150.00
	2/11/11	GAS SERVICE	GENERAL FUND	PAVED STREETS	315.28
	2/11/11	GAS SERVICE	RECREATION	OLSON PARK CAMPGROUND	266.78

VENDOR SORT KEY	DATE	DESCRIPTION	FUND	DEPARTMENT	AMOUNT
	2/11/11	GAS SERVICE	ECONOMIC DEV AUTHO	MISC INDUSTRIAL DEVELO	101.49
	2/11/11	GAS SERVICE	ECONOMIC DEV AUTHO	MISC INDUSTRIAL DEVELO	439.72
	2/11/11	GAS SERVICE	WATER	O-DISTR MISC	13.36
	2/11/11	GAS SERVICE	MUNICIPAL WASTEWAT	O-PURIFY MISC	4,351.82
	2/11/11	GAS SERVICE	AIRPORT	O-GEN MISC	670.81
	2/11/11	GAS SERVICE	AIRPORT	O-GEN MISC	520.30
				TOTAL:	9,190.79
MINNESOTA GFOA	2/11/11	DEB OLSEN	GENERAL FUND	ACCOUNTING	60.00
	2/11/11	BRIAN KOLANDER	GENERAL FUND	ACCOUNTING	60.00
				TOTAL:	120.00
MINNESOTA POLLUTION CONTROL AGENCY	2/11/11	DENNIS APEL	MUNICIPAL WASTEWAT	O-PURIFY SUPERVISION	300.00
	2/11/11	BOB WIEME	MUNICIPAL WASTEWAT	O-PURIFY MISC	300.00
				TOTAL:	600.00
MINNESOTA RECREATION & PARK ASSOC	2/11/11	CERTIFIED PLAYGROUND COURS	SAFETY PROMO/LOSS	HEALTH/SAFETY/FITNESS	590.00
				TOTAL:	590.00
MISCELLANEOUS V BRAAKSMA JEREMY	2/11/11	CUSTOMER REBATE	ELECTRIC	CUSTOMER INSTALL EXPEN	21.00
FISHEL TAMARA	2/11/11	CUSTOMER REBATE	ELECTRIC	CUSTOMER INSTALL EXPEN	25.00
GARCIA MIRIAM & CARLA	2/11/11	REFUND OF DEPOSITS-ACCTS F	ELECTRIC	NON-DEPARTMENTAL	63.50
GARCIA MIRIAM & CARLA	2/11/11	REFUND OF DEPOSITS-ACCTS F	ELECTRIC	ACCTS-RECORDS & COLLEC	0.08
KNUTSON KENT M	2/11/11	REFUND OF DEPOSITS-ACCTS F	ELECTRIC	NON-DEPARTMENTAL	56.82
KNUTSON KENT M	2/11/11	REFUND OF DEPOSITS-ACCTS F	ELECTRIC	ACCTS-RECORDS & COLLEC	0.04
LINDNER ERIC	2/11/11	CUSTOMER REBATE	ELECTRIC	CUSTOMER INSTALL EXPEN	25.00
LINDNER ERIC	2/11/11	CUSTOMER REBATE	ELECTRIC	CUSTOMER INSTALL EXPEN	50.00
SAYGBE ARTHUR G	2/11/11	REFUND OF CREDITS-ACCTS FI	ELECTRIC	NON-DEPARTMENTAL	16.35
TESFAMARIAM BERIHU	2/11/11	CUSTOMER REBATE	ELECTRIC	CUSTOMER INSTALL EXPEN	50.00
				TOTAL:	307.79
MN DEPT OF NATURAL RESOURCES	2/11/11	AQUATIC PLANTS, ALGAE PERM	GENERAL FUND	LAKE IMPROVEMENT	20.69
				TOTAL:	20.69
MN DEPT TRANSPORTATION	2/11/11	MATERIAL TESTING & INSPECT	IMPROVEMENT CONST	RAY DR, RYAN'S RD, 59	209.44
				TOTAL:	209.44
MN POLLUTION CONTROL AGENCY	2/11/11	VOLUNTARY INVESTIGATION CL	IMPROVEMENT CONST	ADI DEVELOPMENT	437.50
				TOTAL:	437.50
MUNICIPAL PIPE TOOL CO LLC	2/11/11	2010 TRUNK SANITARY & STOR	MUNICIPAL WASTEWAT	NON-DEPARTMENTAL	1,093.88
	2/11/11	2010 TRUNK SANITARY & STOR	MUNICIPAL WASTEWAT	PROJECT #11	21,877.50
	2/11/11	2010 TRUNK SANITARY & STOR	STORM WATER MANAGE	NON-DEPARTMENTAL	710.87
	2/11/11	2010 TRUNK SANITARY & STOR	STORM WATER MANAGE	PROJECT #12	14,217.30
				TOTAL:	34,290.05
MURRAY COUNTY ATTORNEY'S OFFICE	2/11/11	LIENES ADMIN FORFEITURE	PD TASK FORCE	BUFFALO RIDGE DRUG TAS	521.00
				TOTAL:	521.00
NATIONAL GOLF FOUNDATION	2/11/11	ANNUAL MEMBERSHIP	RECREATION	GOLF COURSE-CLUBHOUSE	199.00
				TOTAL:	199.00
NOBLES COUNTY ATTORNEY	2/11/11	CHANTHARATH/KRUSE ADMIN FO	PD TASK FORCE	BUFFALO RIDGE DRUG TAS	1,226.06
	2/11/11	INSIXIENGMAY ADMIN FORFEIT	PD TASK FORCE	BUFFALO RIDGE DRUG TAS	34.00
				TOTAL:	1,260.06

VENDOR SORT KEY	DATE	DESCRIPTION	FUND	DEPARTMENT	AMOUNT
NOBLES COUNTY AUDITOR/TREASURER	2/11/11	CAD/RMS ZUERCHER CONTRACT	GENERAL FUND	POLICE ADMINISTRATION	33,031.65
	2/11/11	JANUARY LEGAL	GENERAL FUND	PROSECUTION	<u>11,690.25</u>
				TOTAL:	44,721.90
NOBLES COUNTY ENVIRONMENTAL SERVICES	2/11/11	RECYCLING CONTAINERS	GARBAGE COLLECTION	NON-DEPARTMENTAL	<u>120.00</u>
				TOTAL:	120.00
NOBLES COUNTY LANDFILL	2/11/11	GARLAND DISPOSAL	GENERAL FUND	MISC SPECIAL DAYS/EVEN	<u>30.69</u>
				TOTAL:	30.69
PAUSTIS & SONS	2/11/11	WINE	LIQUOR	NON-DEPARTMENTAL	2,677.14
	2/11/11	LIQUOR	LIQUOR	NON-DEPARTMENTAL	<u>453.02</u>
				TOTAL:	3,130.16
PEPSI COLA BOTTLING CO	2/11/11	MIX	LIQUOR	NON-DEPARTMENTAL	130.00
	2/11/11	MIX	LIQUOR	NON-DEPARTMENTAL	<u>54.75</u>
				TOTAL:	184.75
SCOTT PETERSEN	2/11/11	SCRUB STAGE FLOOR	MEMORIAL AUDITORIUM	MEMORIAL AUDITORIUM	<u>53.44</u>
				TOTAL:	53.44
PHILLIPS WINE & SPIRITS INC	2/11/11	LIQUOR	LIQUOR	NON-DEPARTMENTAL	4,394.45
	2/11/11	WINE	LIQUOR	NON-DEPARTMENTAL	1,080.77
	2/11/11	MIX	LIQUOR	NON-DEPARTMENTAL	34.25
	2/11/11	LIQUOR	LIQUOR	NON-DEPARTMENTAL	5,929.09
	2/11/11	WINE	LIQUOR	NON-DEPARTMENTAL	161.00
	2/11/11	LIQUOR	LIQUOR	NON-DEPARTMENTAL	1,792.10
	2/11/11	WINE	LIQUOR	NON-DEPARTMENTAL	1,095.41
	2/11/11	MIX	LIQUOR	NON-DEPARTMENTAL	<u>34.25</u>
				TOTAL:	14,521.32
PRINTERS THE	2/11/11	ENVELOPES	GENERAL FUND	CLERK'S OFFICE	127.19
	2/11/11	ENVELOPES	GENERAL FUND	ENGINEERING ADMIN	29.29
	2/11/11	ENVELOPES	GENERAL FUND	ECONOMIC DEVELOPMENT	117.14
	2/11/11	VISIT OUR FRIENDLY SKIES F AIRPORT		O-GEN MISC	<u>409.35</u>
				TOTAL:	682.97
PROBUILD NORTH LLC	2/11/11	PLYWOOD, 1X4 PINE	RECREATION	PARK AREAS	<u>28.56</u>
				TOTAL:	28.56
QUALITY WINE & SPIRITS	2/11/11	WINE	LIQUOR	NON-DEPARTMENTAL	216.00
	2/11/11	LIQUOR	LIQUOR	NON-DEPARTMENTAL	8,459.50
	2/11/11	WINE	LIQUOR	NON-DEPARTMENTAL	396.00
	2/11/11	WINE	LIQUOR	NON-DEPARTMENTAL	360.00
	2/11/11	WINE	LIQUOR	NON-DEPARTMENTAL	2,840.00
	2/11/11	LIQUOR	LIQUOR	NON-DEPARTMENTAL	<u>1,839.73</u>
			TOTAL:	14,111.23	
RACOM CORP	2/11/11	MICROPHONE	GENERAL FUND	PAVED STREETS	111.15
	2/11/11	SERVICE LABOR	GENERAL FUND	PAVED STREETS	<u>132.00</u>
				TOTAL:	243.15
ROCK COUNTY ATTORNEY'S OFFICE	2/11/11	VOS ADMIN FORFEITURE	PD TASK FORCE	BUFFALO RIDGE DRUG TAS	<u>444.00</u>
				TOTAL:	444.00
RUNNINGS SUPPLY INC-ACCT#9502440	2/11/11	SNOW SCOOP	ELECTRIC	O-DISTR MISC	71.59

VENDOR SORT KEY	DATE	DESCRIPTION	FUND	DEPARTMENT	AMOUNT
	2/11/11	TOOL BOX FOR #105	ELECTRIC	O-DISTR MISC	26.18
	2/11/11	WOOD SEALER	ELECTRIC	M-DISTR UNDERGRND LINE	<u>20.30</u>
				TOTAL:	118.07
RUNNINGS SUPPLY INC--ACCT#9502485	2/11/11	PAINT FOR MARKERS	RECREATION	GOLF COURSE-GREEN	25.26
	2/11/11	PAINT FOR MARKERS	RECREATION	GOLF COURSE-GREEN	38.38
	2/11/11	SNOWBLOWER PARTS	RECREATION	PARK AREAS	13.95
	2/11/11	SHOP VAC	MUNICIPAL WASTEWAT	O-PURIFY MISC	<u>170.99</u>
				TOTAL:	248.58
RYEN STEVEN P	2/11/11	REIMBURSE MILEAGE	LIQUOR	O-GEN MISC	<u>6.38</u>
				TOTAL:	6.38
S & K TRUCK LINE INC	2/11/11	FREIGHT	LIQUOR	O-SOURCE MISC	70.80
	2/11/11	FREIGHT	LIQUOR	O-SOURCE MISC	146.40
	2/11/11	FREIGHT	LIQUOR	O-SOURCE MISC	201.60
	2/11/11	FREIGHT	LIQUOR	O-SOURCE MISC	244.80
	2/11/11	FREIGHT	LIQUOR	O-SOURCE MISC	<u>400.80</u>
				TOTAL:	1,064.40
SCHAAP SANITATION INC	2/11/11	MONTHLY GARBAGE SERVICE	GENERAL FUND	GENERAL GOVT BUILDINGS	90.04
	2/11/11	MONTHLY GARBAGE SERVICE	GENERAL FUND	PAVED STREETS	85.81
	2/11/11	MONTHLY GARBAGE SERVICE	COMMUNITY CTR/GRAN	COMMUNITY CENTER	43.63
	2/11/11	MONTHLY GARBAGE SERVICE	RECREATION	PARK AREAS	173.70
	2/11/11	MONTHLY GARBAGE SERVICE	WATER	O-DISTR MISC	121.19
	2/11/11	MONTHLY GARBAGE SERVICE	ELECTRIC	O-DISTR MISC	134.25
	2/11/11	MONTHLY GARBAGE SERVICE	LIQUOR	O-GEN MISC	100.57
	2/11/11	MONTHLY GARBAGE SERVICE	AIRPORT	O-GEN MISC	68.04
	2/11/11	MONTHLY GARBAGE SERVICE	MEMORIAL AUDITORIUM	MEMORIAL AUDITORIUM	12.48
	2/11/11	DECEMBER 2010 SOLID WASTE	GARBAGE COLLECTION	SOLID WASTE/RECYCLE	60,470.32
	2/11/11	DECEMBER 2010 SOLID WASTE	GARBAGE COLLECTION	SOLID WASTE/RECYCLE	12,334.28
	2/11/11	DECEMBER 2010 SOLID WASTE	GARBAGE COLLECTION	CODE ENFORCEMENT	3,955.60
	2/11/11	DECEMBER 2010 SOLID WASTE	GARBAGE COLLECTION	CODE ENFORCEMENT	<u>278.18</u>
				TOTAL:	77,311.73
SCHWALBACH ACE HARDWARE-5930	2/11/11	DOUBLE CUT KEY	GENERAL FUND	POLICE ADMINISTRATION	2.87
	2/11/11	SNOW PUSHER	GENERAL FUND	FIRE ADMINISTRATION	48.08
	2/11/11	CREDIT FOR RETURN	GENERAL FUND	PAVED STREETS	3.99
	2/11/11	BOLTS	GENERAL FUND	PAVED STREETS	2.45
	2/11/11	CLEANING SUPPLIES	COMMUNITY CTR/GRAN	COMMUNITY CENTER	18.46
	2/11/11	1/2" DRILL	RECREATION	PARK AREAS	<u>142.13</u>
				TOTAL:	210.00
SCHWALBACH ACE #6067	2/11/11	SHORING EQUIPMENT LIFTING	WATER	O-DIST UNDERGRND LINES	5.96
	2/11/11	FLASHLIGHT	ELECTRIC	O-DISTR MISC	8.54
	2/11/11	RECLOSER	ELECTRIC	M-DISTR UNDERGRND LINE	3.20
	2/11/11	GLUE	ELECTRIC	M-DISTR UNDERGRND LINE	9.07
	2/11/11	CORD	ELECTRIC	M-DISTR UNDERGRND LINE	<u>22.42</u>
				TOTAL:	49.19
ARTHUR SHERER	2/11/11	JANUARY 11 SNOW REMOVAL	GENERAL FUND	ICE AND SNOW REMOVAL	480.00
	2/11/11	JANUARY 11 SNOW REMOVAL	COMMUNITY CTR/GRAN	COMMUNITY CENTER	195.00
	2/11/11	JANUARY 11 SNOW REMOVAL	MEMORIAL AUDITORIUM	MEMORIAL AUDITORIUM	<u>480.00</u>
				TOTAL:	1,155.00
SHINE BROS CORP OF MN	2/11/11	SQUARE TUBING-LADDER	MUNICIPAL WASTEWAT	M-SOURCE MAINS & LIFTS	37.26

VENDOR SORT KEY	DATE	DESCRIPTION	FUND	DEPARTMENT	AMOUNT
				TOTAL:	37.26
SOUTHWEST MINNESOTA HOUSING PARTNERSHI	2/11/11	CDAP070048OFY08 #44	SMALL CITIES GRANT	SW MN HOUSING	15,550.00
	2/11/11	CDAP090075OFY10 #5	SMALL CITIES GRANT	SW MN HOUSING	15,870.00
				TOTAL:	31,420.00
SOUTHWEST MN CHAPTER OF I.C.C.	2/11/11	2011 MEMBERSHIP	GENERAL FUND	ECONOMIC DEVELOPMENT	100.00
				TOTAL:	100.00
SOUTHWEST REGIONAL DEVELOPMENT COMM	2/11/11	ADMINISTRATIVE SERVICES	ECONOMIC DEV AUTHO	TRAINING/TESTING CENTE	258.56
	2/11/11	AIRPORT ZONING ORDINANCE	AIRPORT	O-GEN MISC	440.00
				TOTAL:	698.56
SOUTHWEST WHOLESALE CO INC	2/11/11	COFFEE	GENERAL FUND	GENERAL GOVT BUILDINGS	121.10
				TOTAL:	121.10
SOUTHWESTERN MINN OPPORTUNITY COUNCIL	2/11/11	REFUND-JOHANNA R CATALAN	ELECTRIC	NON-DEPARTMENTAL	22.00
	2/11/11	REFUND-JOHANNA R CATALAN	ELECTRIC	ACCTS-RECORDS & COLLEC	0.04
				TOTAL:	22.04
ROBIN STOYKE	2/11/11	CITY MATS	GENERAL FUND	GENERAL GOVT BUILDINGS	52.16
				TOTAL:	52.16
STUART C IRBY CO	2/11/11	METER LUGS FOR 120/208	ELECTRIC	FA DISTR METERS	128.25
				TOTAL:	128.25
TURFWERKS	2/11/11	VERTI-CUT BLADES	RECREATION	GOLF COURSE-GREEN	595.67
				TOTAL:	595.67
UNITED STATES GOLF ASSOC INC	2/11/11	2011 MEMBERSHIP	RECREATION	GOLF COURSE-CLUBHOUSE	110.00
				TOTAL:	110.00
VERIZON WIRELESS	2/11/11	WIRELESS PHONE SERVICE	GENERAL FUND	MAYOR AND COUNCIL	45.86
	2/11/11	WIRELESS PHONE SERVICE	GENERAL FUND	ADMINISTRATION	54.55
	2/11/11	WIRELESS PHONE SERVICE	GENERAL FUND	ENGINEERING ADMIN	68.20
	2/11/11	WIRELESS PHONE SERVICE	GENERAL FUND	ECONOMIC DEVELOPMENT	34.10
	2/11/11	WIRELESS PHONE SERVICE	GENERAL FUND	PAVED STREETS	68.20
	2/11/11	WIRELESS PHONE SERVICE	PD TASK FORCE	BUFFALO RIDGE DRUG TAS	431.15
	2/11/11	WIRELESS PHONE SERVICE	RECREATION	PARK AREAS	34.10
	2/11/11	WIRELESS PHONE SERVICE	RECREATION	OLSON PARK CAMPGROUND	34.10
	2/11/11	WIRELESS PHONE SERVICE	MEMORIAL AUDITORIUM	MEMORIAL AUDITORIUM	35.37
				TOTAL:	805.63
VON HOLDT BRAD	2/11/11	SNOW REMOVAL- APEL	GENERAL FUND	CODE ENFORCEMENT	25.00
	2/11/11	SNOW REMOVAL-CLARY	GENERAL FUND	CODE ENFORCEMENT	50.00
	2/11/11	SNOW REMOVAL-FOOD N FUEL	GENERAL FUND	CODE ENFORCEMENT	25.00
	2/11/11	SNOW REMOVAL-GRAND AVE	GENERAL FUND	CODE ENFORCEMENT	25.00
	2/11/11	SNOW REMOVAL-OSLO	GENERAL FUND	CODE ENFORCEMENT	50.00
				TOTAL:	175.00
MARGARET HURLBUT VOSBURGH	2/11/11	ORGANIZER	MEMORIAL AUDITORIUM	MEMORIAL AUDITORIUM	39.90
				TOTAL:	39.90
WAL MART BUSINESS	2/11/11	PRINTER	MUNICIPAL WASTEWAT	O-PURIFY LABORATORY	68.72
				TOTAL:	68.72

VENDOR SORT KEY	DATE	DESCRIPTION	FUND	DEPARTMENT	AMOUNT
WENDLAND SELLERS BROMELAND PA	2/11/11	LEGAL FEES	IMPROVEMENT CONST	RAY DR, RYAN'S RD, 59	<u>102.05</u>
				TOTAL:	102.05
WINE MERCHANTS	2/11/11	WINE	LIQUOR	NON-DEPARTMENTAL	<u>95.25</u>
				TOTAL:	95.25
WIRTZ BEVERAGE MINNESOTA WINE & SPIRIT	2/11/11	LIQUOR	LIQUOR	NON-DEPARTMENTAL	4,598.01
	2/11/11	MIX	LIQUOR	NON-DEPARTMENTAL	39.95
	2/11/11	WINE	LIQUOR	NON-DEPARTMENTAL	127.80
	2/11/11	LIQUOR	LIQUOR	NON-DEPARTMENTAL	1,451.31
	2/11/11	LIQUOR	LIQUOR	NON-DEPARTMENTAL	<u>360.89</u>
				TOTAL:	6,577.96
WORTHINGTON AUTO SUPPLY	2/11/11	WIPER BLADES ON 27	GENERAL FUND	POLICE ADMINISTRATION	38.96
	2/11/11	FUSES	WATER	O-DISTR MISC	<u>3.79</u>
				TOTAL:	42.75
WORTHINGTON EXCAVATING INC	2/11/11	SNOW REMOVAL	GENERAL FUND	FIRE ADMINISTRATION	120.00
	2/11/11	SNOW REMOVAL	GENERAL FUND	ICE AND SNOW REMOVAL	1,983.85
	2/11/11	SNOW REMOVAL	GENERAL FUND	ICE AND SNOW REMOVAL	5,978.65
	2/11/11	TOWER STREET IMPROVEMENTS	IMPROVEMENT CONST	NON-DEPARTMENTAL	87.42-
	2/11/11	SAP BIKE PATH	IMPROVEMENT CONST	NON-DEPARTMENTAL	1,534.95
	2/11/11	2003 SAP ST & STORM IMPROV	IMPROVEMENT CONST	NON-DEPARTMENTAL	4,166.55
	2/11/11	SAP BIKE PATH	IMPROVEMENT CONST	1 AV SW-KNOLLWD TO BIK	1,297.25
	2/11/11	TOWER STREET IMPROVEMENTS	IMPROVEMENT CONST	TOWER-LAKE AV TO 10TH	5,828.00
	2/11/11	2003 SAP ST & STORM IMPROV	IMPROVEMENT CONST	ALLEY BLK 18	2,754.00
	2/11/11	P-ROCK FOR WINTER MAIN BRE	WATER	M-TRANS MAINS	1,215.00
	2/11/11	AIRPORT HANGAR ROAD	AIRPORT	NON-DEPARTMENTAL	325.00-
	2/11/11	AIRPORT HANGAR ROAD	AIRPORT	PROJECT #15	<u>6,500.00</u>
				TOTAL:	30,965.83
WORTHINGTON FOOTWEAR	2/11/11	BOOTS	GENERAL FUND	ENGINEERING ADMIN	176.00
	2/11/11	RESTITCH ZIPPER IN VEST	RECREATION	PARK AREAS	<u>2.68</u>
				TOTAL:	178.68
WORTHINGTON GLASS INC	2/11/11	SHELTER RENTAL BOXES	RECREATION	PARK AREAS	<u>40.57</u>
				TOTAL:	40.57
WORTHINGTON OKABENA WINDSURFERS INC	2/11/11	2011 SPONSORSHIP	GENERAL FUND	OTHER GEN GOVT MISC	<u>500.00</u>
				TOTAL:	500.00
WORTHINGTON REGIONAL ECON DEV CORP	2/11/11	BIOSCIENCE ADVERTISING	ECONOMIC DEV AUTHO	MISC INDUSTRIAL DEVELO	<u>1,500.00</u>
				TOTAL:	1,500.00
WYCOFF DANNY	2/11/11	REIMBURSE	LIQUOR	O-GEN MISC	<u>50.08</u>
				TOTAL:	50.08
CRAIG ZYLSTRA	2/11/11	SNOW REMOVAL LABOR	GENERAL FUND	ICE AND SNOW REMOVAL	<u>175.00</u>
				TOTAL:	175.00
CRAIG ZYLSTRA	2/11/11	SNOW REMOVAL RENTAL	GENERAL FUND	ICE AND SNOW REMOVAL	<u>175.00</u>
				TOTAL:	175.00

VENDOR SORT KEY	DATE	DESCRIPTION	FUND	DEPARTMENT	AMOUNT
===== FUND TOTALS =====					
101		GENERAL FUND			88,012.14
202		COMMUNITY CTR/GRANTS			549.87
204		SMALL CITIES GRANT			31,420.00
207		PD TASK FORCE			3,768.74
229		RECREATION			2,981.84
231		ECONOMIC DEV AUTHORITY			2,299.77
401		IMPROVEMENT CONST			23,024.32
432		EVENT CENTER/AUDITORIUM			104,809.70
601		WATER			1,391.97
602		MUNICIPAL WASTEWATER			32,315.08
604		ELECTRIC			2,810.26
606		STORM WATER MANAGEMENT			20,156.43
609		LIQUOR			99,823.25
612		AIRPORT			16,546.43
614		MEMORIAL AUDITORIUM			663.88
702		DATA PROCESSING			268.65
703		SAFETY PROMO/LOSS CTRL			3,336.80
873		GARBAGE COLLECTION			76,602.02

		GRAND TOTAL:			510,781.15

TOTAL PAGES: 11

VENDOR SORT KEY	DATE	DESCRIPTION	FUND	DEPARTMENT	AMOUNT
APPEL TROY	2/04/11	REIMBURSE	GENERAL FUND	POLICE ADMINISTRATION	30.00
	2/04/11	REIMBURSE	GENERAL FUND	POLICE ADMINISTRATION	<u>30.00</u>
				TOTAL:	60.00
BOLT WILLIAM	2/04/11	REIMBURSE	GENERAL FUND	POLICE ADMINISTRATION	42.00
	2/04/11	REIMBURSE	GENERAL FUND	POLICE ADMINISTRATION	<u>78.00</u>
				TOTAL:	120.00
CRIMINALISTICS INC	2/04/11	REMOTE K-9 DOOR OPENER/SWI	GENERAL FUND	POLICE ADMINISTRATION	<u>106.45</u>
				TOTAL:	106.45
DAWSON, JACLIN	2/04/11	REIMBURSE	GENERAL FUND	POLICE ADMINISTRATION	<u>78.00</u>
				TOTAL:	78.00
DEWILD GRANT RECKERT AND ASSOC	2/04/11	PROFESSIONAL SERVICES	ELECTRIC	O-DISTR MISC	2,590.00
	2/04/11	PROFESSIONAL SERVICES	ELECTRIC	O-DISTR MISC	418.50
	2/04/11	PROFESSIONAL SERVICES	ELECTRIC	FA DISTR POLES TOWERS	6,264.00
	2/04/11	PROFESSIONAL SERVICES	ELECTRIC	FA DISTR POLES TOWERS	<u>1,179.50</u>
				TOTAL:	10,452.00
ECHO GROUP INC	2/04/11	3/4" CONDUIT-FIRE HYDRANT	WATER	M-TRANS HYDRANTS	<u>49.10</u>
				TOTAL:	49.10
ELSING SHAWN	2/04/11	REIMBURSE CMDR TRAINING	GENERAL FUND	POLICE ADMINISTRATION	31.00
	2/04/11	REIMBURSE MSANI	GENERAL FUND	POLICE ADMINISTRATION	<u>30.00</u>
				TOTAL:	61.00
FEIT KIRK	2/04/11	EYE EXAM & SAFETY GLASSES	GENERAL FUND	PAVED STREETS	<u>304.95</u>
				TOTAL:	304.95
FERGUSON ENTERPRISES INC #226	2/04/11	SEWER REPAIR PARTS	WATER	O-DIST UNDERGRND LINES	48.09
	2/04/11	FLEXIBLE WATER LINE CONNEC	MUNICIPAL WASTEWAT	M-PURIFY EQUIPMENT	47.69
	2/04/11	BOILER COUPLING	MUNICIPAL WASTEWAT	M-PURIFY EQUIPMENT	<u>87.57</u>
				TOTAL:	183.35
FERGUSON WATERWORKS INC	2/04/11	7 STAINLESS REPAIR CLAMPS	WATER	M-TRANS MAINS	819.41
	2/04/11	CLAMP EXCHANGE	WATER	M-TRANS MAINS	39.33
	2/04/11	STAINLESS REPAIR CLAMP	WATER	M-TRANS MAINS	<u>76.77</u>
				TOTAL:	935.51
GCC CRMI	2/04/11	TEMPORARY CONCRETE REPAIRS	WATER	M-TRANS MAINS	<u>368.72</u>
				TOTAL:	368.72
GOLF COURSE SUPERINTENDENTS	2/04/11	DUES	RECREATION	GOLF COURSE-GREEN	40.00
	2/04/11	REGISTRATION	RECREATION	GOLF COURSE-GREEN	<u>195.00</u>
				TOTAL:	235.00
GRNJR INC D/B/A SUBWAY	2/04/11	SANDWICHES-OFFICER INTERVI	GENERAL FUND	POLICE ADMINISTRATION	<u>52.35</u>
				TOTAL:	52.35
HARLAND TECHNOLOGY SERVICES	2/04/11	2011 COMPUTER MAINTENANCE	GENERAL FUND	ADMINISTRATION	196.00
	2/04/11	2011 COMPUTER MAINTENANCE	GENERAL FUND	CLERK'S OFFICE	196.00
	2/04/11	2011 COMPUTER MAINTENANCE	GENERAL FUND	ENGINEERING ADMIN	353.00
	2/04/11	2011 COMPUTER MAINTENANCE	GENERAL FUND	ECONOMIC DEVELOPMENT	353.00
	2/04/11	2011 COMPUTER MAINTENANCE	GENERAL FUND	PAVED STREETS	196.00
	2/04/11	2011 COMPUTER MAINTENANCE	DATA PROCESSING	DATA PROCESSING	<u>2,624.00</u>

VENDOR SORT KEY	DATE	DESCRIPTION	FUND	DEPARTMENT	AMOUNT
				TOTAL:	3,918.00
HILLESHEIM CHRISTOPHER	2/04/11	REIMBURSE	GENERAL FUND	POLICE ADMINISTRATION	109.00
				TOTAL:	109.00
JOHNSON CONTROLS INC	2/04/11	TROUBLE SHOOT MAU-MAIN BLD	MUNICIPAL WASTEWAT	M-PURIFY EQUIPMENT	460.50
	2/04/11	TROUBLE SHOOT MAU-MAIN BLD	MUNICIPAL WASTEWAT	M-PURIFY EQUIPMENT	234.98
				TOTAL:	695.48
LAW ENFORCEMENT LABOR SERVICES INC #27	2/04/11	UNION DUES	GENERAL FUND	NON-DEPARTMENTAL	168.00
				TOTAL:	168.00
LIEPOLD RANDY	2/04/11	REIMBURSE	GENERAL FUND	POLICE ADMINISTRATION	99.79
				TOTAL:	99.79
MARCO	2/04/11	COPIER SERVICE	GENERAL FUND	SECURITY CENTER	30.95
	2/04/11	COPIER SERVICE	GENERAL FUND	SECURITY CENTER	30.96
	2/04/11	COPIER SERVICE	GENERAL FUND	SECURITY CENTER	14.84
	2/04/11	COPIER SERVICE	GENERAL FUND	SECURITY CENTER	14.85
				TOTAL:	91.60
MERITAIN HEALTH	2/04/11	HEALTH INS ADMIN	GENERAL FUND	MAYOR AND COUNCIL	1,404.02
	2/04/11	HEALTH INS ADMIN	GENERAL FUND	ADMINISTRATION	352.52
	2/04/11	HEALTH INS ADMIN	GENERAL FUND	CLERK'S OFFICE	525.75
	2/04/11	HEALTH INS ADMIN	GENERAL FUND	ENGINEERING ADMIN	497.83
	2/04/11	HEALTH INS ADMIN	GENERAL FUND	ECONOMIC DEVELOPMENT	694.68
	2/04/11	HEALTH INS ADMIN	GENERAL FUND	GENERAL GOVT BUILDINGS	78.31
	2/04/11	HEALTH INS ADMIN	GENERAL FUND	POLICE ADMINISTRATION	5,779.53
	2/04/11	VERHELST JAN FOR FEB	GENERAL FUND	POLICE ADMINISTRATION	173.23
	2/04/11	HEALTH INS ADMIN	GENERAL FUND	REGULATE LAWFUL GAMBLE	15.84
	2/04/11	HEALTH INS ADMIN	GENERAL FUND	SECURITY CENTER	961.85
	2/04/11	HEALTH INS ADMIN	GENERAL FUND	SECURITY CENTER	961.86
	2/04/11	HEALTH INS ADMIN	GENERAL FUND	ANIMAL CONTROL ENFORCE	94.92
	2/04/11	HEALTH INS ADMIN	GENERAL FUND	PAVED STREETS	437.01
	2/04/11	HEALTH INS ADMIN	GENERAL FUND	ICE AND SNOW REMOVAL	1,390.24
	2/04/11	HEALTH INS ADMIN	GENERAL FUND	MISC SPECIAL DAYS/EVEN	76.40
	2/04/11	HEALTH INS ADMIN	RECREATION	GOLF COURSE-GREEN	141.29
	2/04/11	HEALTH INS ADMIN	RECREATION	PARK AREAS	409.32
	2/04/11	HEALTH INS ADMIN	PIR/TRUNKS	SP ASSESS-ADMIN ESCROW	61.17
	2/04/11	HEALTH INS ADMIN	IMPROVEMENT CONST	W OXFORD-ELMWOOD TO PA	18.50
	2/04/11	HEALTH INS ADMIN	IMPROVEMENT CONST	PEDESTRIAN RAMPS	32.14
	2/04/11	HEALTH INS ADMIN	IMPROVEMENT CONST	TREVOR ST	37.00
	2/04/11	HEALTH INS ADMIN	IMPROVEMENT CONST	FRANKLIN ST	64.28
	2/04/11	HEALTH INS ADMIN	IMPROVEMENT CONST	ALLEY BLOCK 16	18.50
	2/04/11	HEALTH INS ADMIN	IMPROVEMENT CONST	ALLEY BLK 18	106.14
	2/04/11	HEALTH INS ADMIN	IMPROVEMENT CONST	BLOCK 28 ALLEY	10.71
	2/04/11	HEALTH INS ADMIN	IMPROVEMENT CONST	BLOCK 28 ALLEY	18.50
	2/04/11	HEALTH INS ADMIN	WATER	O-SOURCE WELLS & SPRNG	5.17
	2/04/11	HEALTH INS ADMIN	WATER	O-PUMPING	14.44
	2/04/11	HEALTH INS ADMIN	WATER	O-PURIFY LABOR	21.67
	2/04/11	HEALTH INS ADMIN	WATER	O-DISTR SUPER AND ENG	352.52
	2/04/11	HEALTH INS ADMIN	WATER	O-DIST UNDERGRND LINES	166.79
	2/04/11	HEALTH INS ADMIN	WATER	O-DISTR MISC	216.32
	2/04/11	HEALTH INS ADMIN	WATER	M-TRANS MAINS	49.79
	2/04/11	HEALTH INS ADMIN	WATER	M-DISTR METERS	68.31
	2/04/11	HEALTH INS ADMIN	WATER	GENERAL ADMIN	49.78

VENDOR SORT KEY	DATE	DESCRIPTION	FUND	DEPARTMENT	AMOUNT
	2/04/11	HEALTH INS ADMIN	WATER	ADMIN OFFICE SUPPLIES	1.29
	2/04/11	HEALTH INS ADMIN	WATER	ACCTS-METER READING	141.01
	2/04/11	HEALTH INS ADMIN	WATER	ACCTS-RECORDS & COLLEC	127.79
	2/04/11	HEALTH INS ADMIN	WATER	PROJECT #14	625.15
	2/04/11	HEALTH INS ADMIN	MUNICIPAL WASTEWAT	O-SOURCE SUPERVISION	51.97
	2/04/11	HEALTH INS ADMIN	MUNICIPAL WASTEWAT	O-SOURCE MAINS & LIFTS	100.48
	2/04/11	HEALTH INS ADMIN	MUNICIPAL WASTEWAT	O-PURIFY SUPERVISION	121.26
	2/04/11	HEALTH INS ADMIN	MUNICIPAL WASTEWAT	O-PURIFY LABOR	190.92
	2/04/11	HEALTH INS ADMIN	MUNICIPAL WASTEWAT	O-PURIFY LABORATORY	356.85
	2/04/11	HEALTH INS ADMIN	MUNICIPAL WASTEWAT	O-PURIFY MISC	104.01
	2/04/11	HEALTH INS ADMIN	MUNICIPAL WASTEWAT	M-SOURCE MAINS & LIFTS	477.66
	2/04/11	HEALTH INS ADMIN	MUNICIPAL WASTEWAT	M-PURIFY EQUIPMENT	266.60
	2/04/11	HEALTH INS ADMIN	MUNICIPAL WASTEWAT	GENERAL ADMIN	39.82
	2/04/11	HEALTH INS ADMIN	MUNICIPAL WASTEWAT	ADMIN OFFICE SUPPLIES	1.29
	2/04/11	HEALTH INS ADMIN	MUNICIPAL WASTEWAT	ACCT-RECORDS & COLLECT	106.63
	2/04/11	HEALTH INS ADMIN	MUNICIPAL WASTEWAT	PROJECT #8	258.42
	2/04/11	HEALTH INS ADMIN	ELECTRIC	O-DISTR UNDERGRND LINE	30.32
	2/04/11	HEALTH INS ADMIN	ELECTRIC	O-DISTR MISC	329.14
	2/04/11	HEALTH INS ADMIN	ELECTRIC	M-CISTR SUPER & ENG	30.33
	2/04/11	HEALTH INS ADMIN	ELECTRIC	M-DISTR STATION EQUIPM	35.25
	2/04/11	HEALTH INS ADMIN	ELECTRIC	M-DISTR UNDERGRND LINE	418.70
	2/04/11	HEALTH INS ADMIN	ELECTRIC	M-DISTR ST LITE & SIG	35.19
	2/04/11	HEALTH INS ADMIN	ELECTRIC	M-DISTR PLANT MISC	117.42
	2/04/11	HEALTH INS ADMIN	ELECTRIC	GENERAL ADMIN	242.26
	2/04/11	HEALTH INS ADMIN	ELECTRIC	ADMIN OFFICE SUPPLIES	12.91
	2/04/11	HEALTH INS ADMIN	ELECTRIC	ACCTS-METER READING	218.65
	2/04/11	HEALTH INS ADMIN	ELECTRIC	ACCTS-RECORDS & COLLEC	549.93
	2/04/11	HEALTH INS ADMIN	ELECTRIC	ACCTS-ASSISTANCE	176.26
	2/04/11	HEALTH INS ADMIN	ELECTRIC	FA DISTR UNDRGRND COND	74.45
	2/04/11	HEALTH INS ADMIN	ELECTRIC	FA COMMUNICATION EQUIP	35.25
	2/04/11	HEALTH INS ADMIN	INDUSTRIAL WASTEWA	O-PURIFY MISC	33.71
	2/04/11	HEALTH INS ADMIN	STORM WATER MANAGE	STORM DRAINAGE	64.65
	2/04/11	HEALTH INS ADMIN	LIQUOR	O-GEN MISC	692.92
	2/04/11	HEALTH INS ADMIN	AIRPORT	O-GEN MISC	21.98
	2/04/11	HEALTH INS ADMIN	AIRPORT	PROJECT #15	3.90
	2/04/11	HEALTH INS ADMIN	MEMORIAL AUDITORIUM	MEMORIAL AUDITORIUM	346.46
	2/04/11	HEALTH INS ADMIN	DATA PROCESSING	DATA PROCESSING	525.75
	2/04/11	D KLEVE 1/11 FOR 2/11	HEALTH INS PLAN (T	NON-DEPARTMENTAL	173.23
	2/04/11	HIPAA CERT	HEALTH INS PLAN (T	EMPLOYEE PENS & BENEFI	1.50
				TOTAL:	22,447.64
MINNESOTA VALLEY TESTING LABS INC	2/04/11	BOTTLES FOR TESTING	MUNICIPAL WASTEWAT	O-PURIFY LABORATORY	899.54
				TOTAL:	899.54
MISCELLANEOUS V	2/04/11	REFUND OF DEPOSITS-ACCTS F	ELECTRIC	NON-DEPARTMENTAL	88.42
AGWA ABANG A	2/04/11	REFUND OF DEPOSITS-ACCTS F	ELECTRIC	ACCTS-RECORDS & COLLEC	0.04
AILTS ROBERT	2/04/11	CUSTOMER REBATE	ELECTRIC	CUSTOMER INSTALL EXPEN	25.00
EH HSER GAY	2/04/11	REFUND OF DEPOSITS-ACCTS F	ELECTRIC	NON-DEPARTMENTAL	50.49
EH HSER GAY	2/04/11	REFUND OF DEPOSITS-ACCTS F	ELECTRIC	ACCTS-RECORDS & COLLEC	0.03
MARTINEZ ALEMAN MERCED	2/04/11	REFUND OF DEPOSITS-ACCTS F	ELECTRIC	NON-DEPARTMENTAL	10.79
MARTINEZ ALEMAN MERCED	2/04/11	REFUND OF DEPOSITS-ACCTS F	ELECTRIC	ACCTS-RECORDS & COLLEC	0.02
MCDANIEL MICHELLE A	2/04/11	REFUND OF DEPOSITS-ACCTS F	ELECTRIC	NON-DEPARTMENTAL	42.98
MCDANIEL MICHELLE A	2/04/11	REFUND OF DEPOSITS-ACCTS F	ELECTRIC	ACCTS-RECORDS & COLLEC	0.03
MYROM LONNIE	2/04/11	CUSTOMER REBATE	ELECTRIC	CUSTOMER INSTALL EXPEN	50.00
NUNEZ REY G	2/04/11	REFUND OF DEPOSITS-ACCTS F	ELECTRIC	NON-DEPARTMENTAL	40.44
NUNEZ REY G	2/04/11	REFUND OF DEPOSITS-ACCTS F	ELECTRIC	ACCTS-RECORDS & COLLEC	0.04

VENDOR SORT KEY	DATE	DESCRIPTION	FUND	DEPARTMENT	AMOUNT
RAMIREZ MICHAEL	2/04/11	REFUND OF DEPOSITS-ACCTS F	ELECTRIC	NON-DEPARTMENTAL	20.81
RAMIREZ MICHAEL	2/04/11	REFUND OF DEPOSITS-ACCTS F	ELECTRIC	ACCTS-RECORDS & COLLEC	0.03
SODERHOLM KATIE	2/04/11	CUSTOMER REBATE	ELECTRIC	CUSTOMER INSTALL EXPEN	50.00
				TOTAL:	379.12
MN CHILD SUPPORT PAYMENT CTR	2/04/11	GARNISHMENT	WATER	NON-DEPARTMENTAL	294.46
				TOTAL:	294.46
MORRIS ELECTRONICS INC	2/04/11	LAPTOP	MUNICIPAL WASTEWAT	O-PURIFY LABORATORY	400.00
	2/04/11	LAPTOP	ELECTRIC	CUSTOMER INSTALL EXPEN	464.38
	2/04/11	TECHNICAL SUPPORT	ELECTRIC	ACCTS-RECORDS & COLLEC	32.50
				TOTAL:	896.88
NOBLES COOPERATIVE ELECTRIC	2/04/11	ELECTRIC SERVICE CLUBHOUSE	RECREATION	GOLF COURSE-CLUBHOUSE	284.99
	2/04/11	ELECTRIC SERVICE WELL	RECREATION	GOLF COURSE-GREEN	13.36
	2/04/11	ELECTRIC SERVICE MAINT BLD	RECREATION	GOLF COURSE-GREEN	21.51
	2/04/11	ELECTRIC SERVICE PUMPHOUSE	RECREATION	GOLF COURSE-GREEN	80.16
	2/04/11	ELECTRIC SERVICE	WATER	O-PUMPING	54.08
	2/04/11	ELECTRIC SERVICE	WATER	O-PUMPING	122.72
	2/04/11	ELECTRIC SERVICE	AIRPORT	O-GEN MISC	37.79
				TOTAL:	614.61
NOBLES COUNTY AUDITOR/TREASURER	2/04/11	LONG DISTANCE 12/10	GENERAL FUND	NON-DEPARTMENTAL	486.22
	2/04/11	4TH QTR POSTAGE	GENERAL FUND	NON-DEPARTMENTAL	411.56
				TOTAL:	897.78
NORTHEAST WISCONSIN TECHNICAL COLLEGE	2/04/11	TASER CERTIFICATIONS	GENERAL FUND	POLICE ADMINISTRATION	525.00
				TOTAL:	525.00
PELLEGRINOS FIRE EXTINGUISHER SALES	2/04/11	REFILL & RECHARGE EXTINGUI	WATER	O-DISTR MISC	26.55
				TOTAL:	26.55
ROYAL CHEMICAL INC	2/04/11	HIGH EXPANSION FOAM	GENERAL FUND	NON-DEPARTMENTAL	1,359.18
	2/04/11	HIGH EXPANSION FOAM	GENERAL FUND	NON-DEPARTMENTAL	1,359.43
				TOTAL:	2,718.61
RUNNINGS SUPPLY INC-ACCT#9502440	2/04/11	STEP LADDER-FILTER PLANT	WATER	O-PURIFY MISC	101.52
	2/04/11	AIR COMPRESSOR MAINTENANCE	WATER	O-DISTR MISC	19.20
	2/04/11	QUILTED BIB OVERALLS	MUNICIPAL WASTEWAT	O-SOURCE MAINS & LIFTS	89.99
	2/04/11	BALL VALVE	MUNICIPAL WASTEWAT	M-PURIFY EQUIPMENT	5.34
				TOTAL:	216.05
SCHELHAAS KIRK	2/04/11	REIMBURSE BOOTS	GENERAL FUND	POLICE ADMINISTRATION	29.00
	2/04/11	VOID CK#57500 & REISSUED	GENERAL FUND	POLICE ADMINISTRATION	92.00
	2/04/11	VOID CK#57500 & REISSUED	GENERAL FUND	POLICE ADMINISTRATION	38.61
				TOTAL:	159.61
STREICHER'S INC	2/04/11	COTTON WEAPONS CLEANING PA	GENERAL FUND	SECURITY CENTER	12.28
	2/04/11	COTTON WEAPONS CLEANING PA	GENERAL FUND	SECURITY CENTER	12.29
				TOTAL:	24.57
STUGELMEYER BRUCE	2/04/11	REIMBURSE BOOTS	GENERAL FUND	POLICE ADMINISTRATION	164.25
				TOTAL:	164.25
UMMA	2/04/11	2011 UMMA WINFER MEETING R	ELECTRIC	O-DISTR MISC	50.00
				TOTAL:	50.00

VENDOR SORT KEY	DATE	DESCRIPTION	FUND	DEPARTMENT	AMOUNT
UNIFORMS UNLIMITED INC	2/04/11	TASER CARTRIDGES-USE OF FO	GENERAL FUND	SECURITY CENTER	261.87
	2/04/11	TASER CARTRIDGES-USE OF FO	GENERAL FUND	SECURITY CENTER	<u>261.88</u>
	TOTAL:				523.75
VANTAGEPOINT TRANSFER AGENTS-457	2/04/11	DEFERRED COMP	GENERAL FUND	NON-DEPARTMENTAL	351.42
	2/04/11	DEFERRED COMP	GENERAL FUND	POLICE ADMINISTRATION	<u>76.92</u>
	TOTAL:				428.34
VIRGIL VEEN	2/04/11	DEC OIL CHANGES	GENERAL FUND	NON-DEPARTMENTAL	108.00
	2/04/11	OIL CHANGES, REPAIRS TO SQ	GENERAL FUND	POLICE ADMINISTRATION	<u>158.00</u>
	TOTAL:				266.00
VERIZON WIRELESS	2/04/11	WIRELESS PHONE SERVICE	GENERAL FUND	POLICE ADMINISTRATION	698.12
	2/04/11	AIR CARDS	GENERAL FUND	POLICE ADMINISTRATION	312.30
	2/04/11	WIRELESS PHONE SERVICE	GENERAL FUND	SECURITY CENTER	84.40
	2/04/11	WIRELESS PHONE SERVICE	GENERAL FUND	SECURITY CENTER	84.41
	2/04/11	AIR CARDS	GENERAL FUND	SECURITY CENTER	143.12
	2/04/11	AIR CARDS	GENERAL FUND	SECURITY CENTER	143.12
	2/04/11	WIRELESS PHONE SERVICE	GENERAL FUND	CODE ENFORCEMENT	<u>49.81</u>
	TOTAL:				1,515.28
VETERINARY MEDICAL CTR PA	2/04/11	DOG FOOD	GENERAL FUND	POLICE ADMINISTRATION	35.99
	2/04/11	DASUQUIN & DOG FOOD	GENERAL FUND	POLICE ADMINISTRATION	83.42
	2/04/11	LAIKA EMERGENCY CALL	GENERAL FUND	POLICE ADMINISTRATION	75.00
	2/04/11	EUTHANASIA	GENERAL FUND	ANIMAL CONTROL ENFORCE	<u>30.00</u>
	TOTAL:				224.41
VOSSEN DARIN	2/04/11	REIMBURSE	GENERAL FUND	POLICE ADMINISTRATION	42.18
	2/04/11	REIMBURSE	GENERAL FUND	POLICE ADMINISTRATION	<u>42.00</u>
	TOTAL:				84.18

===== FUND TOTALS =====

101	GENERAL FUND	23,520.91
229	RECREATION	1,185.63
321	PIR/TRUNKS	61.17
401	IMPROVEMENT CONST	305.77
601	WATER	3,859.98
602	MUNICIPAL WASTEWATER	4,301.52
604	ELECTRIC	13,684.06
605	INDUSTRIAL WASTEWATER	33.71
606	STORM WATER MANAGEMENT	64.65
609	LIQUOR	692.92
612	AIRPORT	63.67
614	MEMORIAL AUDITORIUM	346.46
702	DATA PROCESSING	3,149.75
705	HEALTH INS PLAN (TPA)	174.73

 GRAND TOTAL: 51,444.93

VENDOR SORT KEY	DATE	DESCRIPTION	FUND	DEPARTMENT	AMOUNT
A & B BUSINESS EQUIPMENT INC	1/28/11	MONTHLY COPIER SERVICE	DATA PROCESSING	COPIER/FAX	<u>110.67</u>
				TOTAL:	110.67
AMERIPRIDE	1/28/11	TOWEL SERVICE FEBRUARY	MUNICIPAL WASTEWAT	O-SOURCE MAINS & LIFTS	<u>63.19</u>
				TOTAL:	63.19
B & R VENTURES LLC	1/28/11	BED TECH TI#13 2010 PAYMEN	BEDFORD TECHNOLOGY	BEDFORD TECHNOLOGIES	4,819.01
	1/28/11	BED TECH TI#13 2010 PAYMEN	BEDFORD TECHNOLOGY	BEDFORD TECHNOLOGIES	7,788.49
	1/28/11	BED TECH TI #3 2011 PAYMEN	BEDFORD TECHNOLOGY	BEDFORD TECHNOLOGIES	4,963.58
	1/28/11	BED TECH TI #3 2011 PAYMEN	BEDFORD TECHNOLOGY	BEDFORD TECHNOLOGIES	<u>7,643.92</u>
				TOTAL:	25,215.00
BOLTON & MENK INC	1/28/11	PRELIM DESIGN SERVICES	IMPROVEMENT CONST	TH 59 N & BIO DR DESIG	5,015.00
	1/28/11	GRANT, FUNDING ASSISTANCE	IMPROVEMENT CONST	TH 59 N & BIO DR DESIG	<u>4,567.50</u>
				TOTAL:	9,582.50
BORDER STATES ELECTRIC SUPPLY	1/28/11	STREET LIGHT LAMPS	ELECTRIC	M-DISTR ST LITE & SIG	<u>243.68</u>
				TOTAL:	243.68
BURNS LOCK & KEY	1/28/11	REPAIR WELL DOOR LOCK	WATER	M-PUMPING	<u>41.03</u>
				TOTAL:	41.03
C&S CHEMICALS INC	1/28/11	3,966 GALLONS ALUM	MUNICIPAL WASTEWAT	O-PURIFY MISC	4,938.04
	1/28/11	4,094 GALLONS ALUM	MUNICIPAL WASTEWAT	O-PURIFY MISC	5,097.41
	1/28/11	4,384 GALLONS ALUM	MUNICIPAL WASTEWAT	O-PURIFY MISC	<u>5,458.49</u>
				TOTAL:	15,493.94
CHAMBER OF COMMERCE	1/28/11	DECEMBER LODGING TAX	TOURISM PROMOTION	LODGING TAX/TOURISM	<u>7,541.57</u>
				TOTAL:	7,541.57
COOPERATIVE ENERGY CO	1/28/11	UNLEAD GAS, CHAIN BAR OIL	GENERAL FUND	FIRE ADMINISTRATION	53.95
	1/28/11	PROPANE FOR SHOP	RECREATION	GOLF COURSE-GREEN	<u>1,032.45</u>
				TOTAL:	1,086.40
COTTONWOOD COUNTY SHERIFF OFFICE	1/28/11	SAFE & SOBER GRANT	GENERAL FUND	POLICE ADMINISTRATION	<u>246.24</u>
				TOTAL:	246.24
DAKOTA SUPPLY GROUP INC	1/28/11	METER REPAIR SUPPLIES	WATER	M-DISTR METERS	<u>418.61</u>
				TOTAL:	418.61
DAVIS TYPEWRITER CO INC	1/28/11	CALENDARS, FILES, PENS	LIQUOR	O-GEN MISC	<u>101.86</u>
				TOTAL:	101.86
DEPARTMENT OF FINANCE	1/28/11	ADMIN FORFEITURE RIENKE	PD TASK FORCE	BUFFALO RIDGE DRUG TAS	<u>142.00</u>
				TOTAL:	142.00
DUBA SHEET METAL WORKS	1/28/11	LIQUOR STORE SERVICE	LIQUOR	O-GEN MISC	201.34
	1/28/11	AIRPORT SERVICE	AIRPORT	O-GEN MISC	23.00
	1/28/11	AIRPORT SERVICE	AIRPORT	O-GEN MISC	<u>65.80</u>
				TOTAL:	290.14
DUECO INC	1/28/11	PART RETURNED	ELECTRIC	O-DISTR UNDERGRND LINE	672.39
	1/28/11	#101 ANNUAL INSPECTION	ELECTRIC	O-DISTR UNDERGRND LINE	<u>917.23</u>
				TOTAL:	244.84
EARL F ANDERSEN INC	1/28/11	SIGNS	GENERAL FUND	SIGNS AND SIGNALS	705.01

VENDOR SORT KEY	DATE	DESCRIPTION	FUND	DEPARTMENT	AMOUNT
				TOTAL:	705.01
ELECTRIC PUMP INC	1/28/11	IS6 SWITCH FOR LIFT STATIO	MUNICIPAL WASTEWAT	M-SOURCE MAINS & LIFTS	521.11
				TOTAL:	521.11
ENVIRONMENTAL RESOURCE ASSOCIATES	1/28/11	QUALITY CONTROL SAMPLES-TE	MUNICIPAL WASTEWAT	O-PURIFY LABORATORY	454.28
				TOTAL:	454.28
FERGUSON ENTERPRISES INC #226	1/28/11	REPAIR SERVICE LINE FREEZE	WATER	O-DIST UNDERGRND LINES	527.04
	1/28/11	6" 45 DEGREE ELBOW	MUNICIPAL WASTEWAT	M-PURIFY STRUCTURES	14.43
	1/28/11	EYE WASH BOWL, SAFETY ITEM	SAFETY PROMO/LOSS	HEALTH/SAFETY/FITNESS	1,559.16
				TOTAL:	2,100.63
FRONTIER COMMUNICATIONS	1/28/11	PHONE SERVICE	GENERAL FUND	MAYOR AND COUNCIL	54.50
	1/28/11	PHONE SERVICE	GENERAL FUND	ADMINISTRATION	370.57
	1/28/11	PHONE SERVICE	GENERAL FUND	CLERK'S OFFICE	173.50
	1/28/11	PHONE SERVICE	GENERAL FUND	ACCOUNTING	63.85
	1/28/11	PHONE SERVICE	GENERAL FUND	ENGINEERING ADMIN	223.68
	1/28/11	PHONE SERVICE	GENERAL FUND	ECONOMIC DEVELOPMENT	115.12
	1/28/11	PHONE SERVICE	GENERAL FUND	OTHER GEN GOVT MISC	23.44
	1/28/11	PHONE SERVICE	GENERAL FUND	FIRE ADMINISTRATION	126.53
	1/28/11	PHONE SERVICE	GENERAL FUND	PAVED STREETS	183.24
	1/28/11	PHONE SERVICE	COMMUNITY CTR/GRAN	COMMUNITY CENTER	121.81
	1/28/11	PHONE SERVICE	RECREATION	GOLF COURSE-CLUBHOUSE	95.05
	1/28/11	PHONE SERVICE	RECREATION	GOLF COURSE-GREEN	115.99
	1/28/11	PHONE SERVICE	RECREATION	PARK AREAS	141.67
	1/28/11	FIRE ALARM	ECONOMIC DEV AUTHO	MISC INDUSTRIAL DEVELO	58.63
	1/28/11	PHONE SERVICE	WATER	O-PUMPING	71.21
	1/28/11	PHONE SERVICE	WATER	O-PURIFY MISC	59.81
	1/28/11	PHONE SERVICE	WATER	O-DISTR STORAGE	37.86
	1/28/11	PHONE SERVICE	WATER	O-DISTR MISC	49.86
	1/28/11	PHONE SERVICE	WATER	ADMIN OFFICE SUPPLIES	24.55
	1/28/11	PHONE SERVICE	WATER	ACCTS-RECORDS & COLLEC	83.85
	1/28/11	PHONE SERVICE	MUNICIPAL WASTEWAT	O-SOURCE MAINS & LIFTS	209.66
	1/28/11	PHONE SERVICE	MUNICIPAL WASTEWAT	O-PURIFY SUPERVISION	24.61
	1/28/11	PHONE SERVICE	MUNICIPAL WASTEWAT	O-PURIFY MISC	46.79
	1/28/11	PHONE SERVICE	MUNICIPAL WASTEWAT	ADMIN OFFICE SUPPLIES	24.55
	1/28/11	PHONE SERVICE	MUNICIPAL WASTEWAT	ACCT-RECORDS & COLLECT	82.29
	1/28/11	PHONE SERVICE	ELECTRIC	O-SOURCE MISC	60.72
	1/28/11	PHONE SERVICE	ELECTRIC	O-DISTR SUPER & ENG	49.47
	1/28/11	PHONE SERVICE	ELECTRIC	O-DISTR MISC	134.54
	1/28/11	PHONE SERVICE	ELECTRIC	M-DISTR STATION EQUIPM	18.93
	1/28/11	PHONE SERVICE	ELECTRIC	ADMIN OFFICE SUPPLIES	62.25
	1/28/11	PHONE SERVICE	ELECTRIC	ACCTS-RECORDS & COLLEC	206.69
	1/28/11	PHONE SERVICE	ELECTRIC	ACCTS-ASSISTANCE	47.70
	1/28/11	PHONE SERVICE	LIQUOR	O-GEN MISC	168.38
	1/28/11	PHONE SERVICE	AIRPORT	O-GEN MISC	81.42
	1/28/11	PHONE SERVICE	MEMORIAL AUDITORIUM	MEMORIAL AUDITORIUM	55.57
	1/28/11	PHONE SERVICE	DATA PROCESSING	DATA PROCESSING	110.95
	1/28/11	PHONE SERVICE	DATA PROCESSING	COPIER/FAX	22.34
				TOTAL:	3,601.58
HAWKINS INC	1/28/11	2 TONS CHLORINE	WATER	O-PURIFY	1,276.31
				TOTAL:	1,276.31
HY-VEE INC-61609	1/28/11	SUPPLIES	WATER	ACCTS-RECORDS & COLLEC	3.16

VENDOR SORT KEY	DATE	DESCRIPTION	FUND	DEPARTMENT	AMOUNT
	1/28/11	SUPPLIES	WATER	ACCTS-RECORDS & COLLEC	2.53
	1/28/11	SUPPLIES	MUNICIPAL WASTEWAT	ACCT-RECORDS & COLLECT	3.15
	1/28/11	SUPPLIES	MUNICIPAL WASTEWAT	ACCT-RECORDS & COLLECT	2.52
	1/28/11	SUPPLIES	ELECTRIC	ACCTS-RECORDS & COLLEC	6.37
	1/28/11	SUPPLIES	ELECTRIC	ACCTS-RECORDS & COLLEC	5.05
				TOTAL:	22.78
IDEQS	1/28/11	LOGITECH M305 MOUSE	PD TASK FORCE	BUFFALO RIDGE DRUG TAS	29.91
				TOTAL:	29.91
INFRARED SERVICES	1/28/11	INFRARED INSPECT & ANALYSI	ELECTRIC	CUSTOMER INSTALL EXPEN	1,100.00
				TOTAL:	1,100.00
JACKSON COUNTY SHERIFFS OFFICE	1/28/11	SAFE & SOBER GRANT	GENERAL FUND	POLICE ADMINISTRATION	580.87
				TOTAL:	580.87
JACKSON POLICE DEPARTMENT	1/28/11	SAFE & SOBER GRANT	GENERAL FUND	POLICE ADMINISTRATION	604.32
				TOTAL:	604.32
KRIS ENGINEERING INC	1/28/11	CURVED CARBIDE INSERT	GENERAL FUND	ICE AND SNOW REMOVAL	457.13
				TOTAL:	457.13
LEAGUE OF MN CITIES INSURANCE TRUST	1/28/11	INSURANCE CLAIM	SAFETY PROMO/LOSS	HEALTH/SAFETY/FITNESS	4,240.59
				TOTAL:	4,240.59
LYON COUNTY SHERIFF OFFICE	1/28/11	SAFE & SOBER GRANT	GENERAL FUND	POLICE ADMINISTRATION	1,565.29
				TOTAL:	1,565.29
MALTERS SHEPHERD & VON HOLTUM	1/28/11	LEGAL FEES	GENERAL FUND	CITY ATTORNEY	1,237.96
	1/28/11	LEGAL FEES	GENERAL FUND	CITY ATTORNEY	161.15
	1/28/11	LEGAL FEES	GENERAL FUND	CITY ATTORNEY	29.30
	1/28/11	LEGAL FEES	GENERAL FUND	CITY ATTORNEY	505.43
	1/28/11	LEGAL FEES	GENERAL FUND	CITY ATTORNEY	30.00
	1/28/11	LEGAL FEES	GENERAL FUND	ECONOMIC DEVELOPMENT	146.52
	1/28/11	LEGAL FEES	GENERAL FUND	CODE ENFORCEMENT	14.65
	1/28/11	LEGAL FEES	EVENT CENTER/AUDIT	EVENT CENTER	293.00
	1/28/11	LEGAL FEES	AIRPORT	O-GEN MISC	117.20
				TOTAL:	2,535.21
MARSHALL POLICE DEPARTMENT	1/28/11	SAFE & SOBER GRANT	GENERAL FUND	POLICE ADMINISTRATION	572.71
				TOTAL:	572.71
MEAD & HUNT INC	1/28/11	PROFESSIONAL SERVICES	AIRPORT	O-GEN MISC	400.00
	1/28/11	PROFESSIONAL SERVICES	AIRPORT	O-GEN MISC	90.00
	1/28/11	PROFESSIONAL SERVICES	AIRPORT	PROJECT #7	2,128.71
				TOTAL:	2,618.71
MID-STATES ORGANIZED CRIME INFO CENTER	1/28/11	2011 ANNUAL MEMBERSHIP FEE	PD TASK FORCE	BUFFALO RIDGE DRUG TAS	100.00
				TOTAL:	100.00
MILLS & MILLER INC	1/28/11	DEICING SALT	GENERAL FUND	ICE AND SNOW REMOVAL	4,620.40
	1/28/11	DEICING SALT	GENERAL FUND	ICE AND SNOW REMOVAL	3,039.34
				TOTAL:	7,659.74
MINNESOTA DEPARTMENT OF AGRICULTURE	1/28/11	PLAN REVIEW TH 60 WATER MA WATER		PROJECT #14	150.00
				TOTAL:	150.00

VENDOR SORT KEY	DATE	DESCRIPTION	FUND	DEPARTMENT	AMOUNT
MISCELLANEOUS V ALGOOD SHARON	1/28/11	CUSTOMER REBATE	ELECTRIC	CUSTOMER INSTALL EXPEN	250.00
CARAWAY GEORGE	1/28/11	CUSTOMER REBATE	ELECTRIC	CUSTOMER INSTALL EXPEN	25.00
DONOVAN KEVIN	1/28/11	CUSTOMER REBATE	ELECTRIC	CUSTOMER INSTALL EXPEN	10.00
FARAGHER JEFF	1/28/11	CUSTOMER REBATE	ELECTRIC	CUSTOMER INSTALL EXPEN	250.00
KOEPSSELL CARROLL	1/28/11	CUSTOMER REBATE	ELECTRIC	CUSTOMER INSTALL EXPEN	100.00
LOWE KEVIN	1/28/11	CUSTOMER REBATE	ELECTRIC	CUSTOMER INSTALL EXPEN	225.00
MACKLIN TOM & DARLENE	1/28/11	CUSTOMER REBATE	ELECTRIC	CUSTOMER INSTALL EXPEN	50.00
MAMMEN LEE	1/28/11	CUSTOMER REBATE	ELECTRIC	CUSTOMER INSTALL EXPEN	250.00
MUNIZ MARIA	1/28/11	CUSTOMER REBATE	ELECTRIC	CUSTOMER INSTALL EXPEN	50.00
REKER WAYNE	1/28/11	CUSTOMER REBATE	ELECTRIC	CUSTOMER INSTALL EXPEN	50.00
RICKER RICHARD	1/28/11	CUSTOMER REBATE	ELECTRIC	CUSTOMER INSTALL EXPEN	150.00
RIPPERDA MARILYN	1/28/11	CUSTOMER REBATE	ELECTRIC	CUSTOMER INSTALL EXPEN	250.00
SHRUBB RICHARD	1/28/11	CUSTOMER REBATE	ELECTRIC	CUSTOMER INSTALL EXPEN	250.00
TANG HA SU	1/28/11	CUSTOMER REBATE	ELECTRIC	CUSTOMER INSTALL EXPEN	10.00
TIRITILLI JERRY	1/28/11	CUSTOMER REBATE	ELECTRIC	CUSTOMER INSTALL EXPEN	250.00
TRENDS SALON	1/28/11	CUSTOMER REBATE	ELECTRIC	CUSTOMER INSTALL EXPEN	450.00
WALKER MONTE	1/28/11	CUSTOMER REBATE	ELECTRIC	CUSTOMER INSTALL EXPEN	250.00
WESSELINK TAMI	1/28/11	CUSTOMER REBATE	ELECTRIC	CUSTOMER INSTALL EXPEN	250.00
WILDEMAN LINDA	1/28/11	CUSTOMER REBATE	ELECTRIC	CUSTOMER INSTALL EXPEN	150.00
				TOTAL:	3,270.00
MN DEPT TRANSPORTATION	1/28/11	MATERIAL TESTING & INSPECT IMPROVEMENT CONST		RAY DR, RYAN'S RD, 59	1,038.27
				TOTAL:	1,038.27
MURRAY COUNTY SHERIFFS OFFICE	1/28/11	4TH QTR 2010 REIMBURSEMENT	PD TASK FORCE	BUFFALO RIDGE DRUG TAS	12,500.00
				TOTAL:	12,500.00
NOBLES COUNTY	1/28/11	CUSTOMER OWNED GENERATION	ELECTRIC	NON-DEPARTMENTAL	3,052.80
				TOTAL:	3,052.80
NOBLES COUNTY ATTORNEY	1/28/11	ADMIN FORFEITURE RIENKE	PD TASK FORCE	BUFFALO RIDGE DRUG TAS	284.00
				TOTAL:	284.00
NOBLES COUNTY AUDITOR/TREASURER	1/28/11	4TH QTR SECURITY	GENERAL FUND	SECURITY CENTER	1,185.12
	1/28/11	4TH QTR SECURITY	GENERAL FUND	SECURITY CENTER	8,713.91
	1/28/11	4TH QTR SECURITY	GENERAL FUND	SECURITY CENTER	393.58
	1/28/11	4TH QTR SECURITY	GENERAL FUND	SECURITY CENTER	26.72
	1/28/11	4TH QTR SECURITY	GENERAL FUND	SECURITY CENTER	295.07
	1/28/11	4TH QTR SECURITY	GENERAL FUND	SECURITY CENTER	2,746.08
	1/28/11	4TH QTR SECURITY	GENERAL FUND	SECURITY CENTER	14.61
	1/28/11	4TH QTR SECURITY	GENERAL FUND	SECURITY CENTER	1,122.92
	1/28/11	4TH QTR SECURITY	GENERAL FUND	SECURITY CENTER	6,529.64
	1/28/11	4TH QTR SECURITY	GENERAL FUND	SECURITY CENTER	133.18
	1/28/11	4TH QTR SECURITY	GENERAL FUND	SECURITY CENTER	337.79
	1/28/11	4TH QTR SECURITY	GENERAL FUND	SECURITY CENTER	6,234.46
	1/28/11	DECEMBER 2010 SOLID WASTE	WASTE MANAGEMENT C	SOLID WASTE/RECYCLE	7,192.00
				TOTAL:	34,925.08
NOBLES COUNTY SHERIFF	1/28/11	SAFE & SOBER GRANT	GENERAL FUND	POLICE ADMINISTRATION	177.67
	1/28/11	4TH QTR REIMBURSEMENT	PD TASK FORCE	BUFFALO RIDGE DRUG TAS	12,500.00
				TOTAL:	12,677.67
NOBLES-ROCK COMMUNITY HEALTH SERVICES	1/28/11	FLU SHOTS	SAFETY PROMO/LOSS	HEALTH/SAFETY/FITNESS	1,863.00
				TOTAL:	1,863.00
PEER ENGINEERING INC	1/28/11	PROFESSIONAL FBES	IMPROVEMENT CONST	ADI DEVELOPMENT	141.50

VENDOR SORT KEY	DATE	DESCRIPTION	FUND	DEPARTMENT	AMOUNT
				TOTAL:	141.50
PIPESTONE COUNTY SHERIFF OFFICE	1/28/11	4TH QTR REIMBURSEMENT	PD TASK FORCE	BUFFALO RIDGE DRUG TAS	12,500.00
				TOTAL:	12,500.00
PITNEY BOWES INC	1/28/11	QUARTERLY MAILING SYSTEM	WATER	ACCTS-RECORDS & COLLEC	370.73
	1/28/11	QUARTERLY MAILING SYSTEM	MUNICIPAL WASTEWAT	ACCT-RECORDS & COLLECT	370.72
	1/28/11	QUARTERLY MAILING SYSTEM	ELECTRIC	ACCTS-RECORDS & COLLEC	741.45
				TOTAL:	1,482.90
ROCK COUNTY SHERIFFS OFFICE	1/28/11	SAFE & SOBER GRANT	GENERAL FUND	POLICE ADMINISTRATION	669.18
				TOTAL:	669.18
RANDY T TRAYLOR	1/28/11	PLASTER REPAIRS	EVENT CENTER/AUDIT	MEMORIAL AUDITORIUM	2,773.00
				TOTAL:	2,773.00
RUNNINGS SUPPLY INC-ACCT#9502440	1/28/11	ROLLER CHAIN FOR SNOW BLOW	MUNICIPAL WASTEWAT	M-PURIFY EQUIPMENT	48.09
	1/28/11	READY ROD FOR SLUDGE LINE	MUNICIPAL WASTEWAT	M-PURIFY EQUIPMENT	17.61
				TOTAL:	65.70
RUNNINGS SUPPLY INC-ACCT#9502485	1/28/11	BULK NUTS/BOLTS/WASHERS	GENERAL FUND	ICE AND SNOW REMOVAL	19.55
	1/28/11	HARDWARE, BULK BOLTS/WASHE	RECREATION	PARK AREAS	82.49
	1/28/11	BOLTS-TRASH CANS	RECREATION	PARK AREAS	5.48
	1/28/11	UPS SHIPPING CHARGES	AIRPORT	O-GEN MISC	10.54
				TOTAL:	118.06
SANFORD REGIONAL HOSPITAL WORTHINGTON	1/28/11	CUSTOMER OWNED GENERATION	ELECTRIC	NON-DEPARTMENTAL	5,812.95
				TOTAL:	5,812.95
SCHAAP SANITATION INC	1/28/11	GARBAGE SERVICE	GENERAL FUND	FIRE ADMINISTRATION	35.78
				TOTAL:	35.78
SCHWALBACH ACE #6067	1/28/11	WATER HEATER-MAIN CONTROL	MUNICIPAL WASTEWAT	M-PURIFY EQUIPMENT	277.86
				TOTAL:	277.86
SPECIAL OLYMPICS MINNESOTA	1/28/11	TWO ATTENDEES MARCH TRAINI	GENERAL FUND	POLICE ADMINISTRATION	500.00
				TOTAL:	500.00
STUART C IRBY CO	1/28/11	FR CLOTHING	ELECTRIC	O-DISTR MISC	458.44
	1/28/11	FR CLOTHING RETURNED	ELECTRIC	O-DISTR MISC	219.04
	1/28/11	GLOVE TESTING	ELECTRIC	O-DISTR MISC	134.99
	1/28/11	METERS 3 PHASE	ELECTRIC	FA DISTR METERS	5,275.00
				TOTAL:	5,649.39
TACTICAL TECHNOLOGIES INC	1/28/11	500TX ANTENNA AND 18" MIC	PD TASK FORCE	BUFFALO RIDGE DRUG TAS	136.00
				TOTAL:	136.00
UNITED PARCEL SERVICE	1/28/11	INTERNET SHIPPING CHARGES	ELECTRIC	O-DISTR MISC	115.05
				TOTAL:	115.05
WAL MART BUSINESS	1/28/11	SR CENTER COFFEE	COMMUNITY CTR/GRAN	COMMUNITY CENTER	16.96
				TOTAL:	16.96
WESTMOR INDUSTRIES LLC	1/28/11	AIRCRAFT FUELING SYSTEM	AIRPORT	NON-DEPARTMENTAL	4,396.06
	1/28/11	AIRCRAFT FUELING SYSTEM	AIRPORT	PROJECT #8	87,921.20
				TOTAL:	83,525.14

VENDOR SORT KEY	DATE	DESCRIPTION	FUND	DEPARTMENT	AMOUNT
WIRTZ BEVERAGE MINNESOTA WINE & SPIRIT	1/28/11	WINE	LIQUOR	NON-DEPARTMENTAL	320.00
	1/28/11	LIQUOR	LIQUOR	NON-DEPARTMENTAL	3,914.78
	1/28/11	MIX	LIQUOR	NON-DEPARTMENTAL	26.95
	1/28/11	WINE	LIQUOR	NON-DEPARTMENTAL	555.20
				TOTAL:	4,816.93
WORTHINGTON AUTO SUPPLY	1/28/11	WAX	WATER	O-DISTR MISC	6.63
				TOTAL:	6.63
WORTHINGTON EXCAVATING INC	1/28/11	SNOW REMOVAL-DECEMBER	GENERAL FUND	ICE AND SNOW REMOVAL	11,647.50
	1/28/11	SAILBOARD BEACH SOD FINAL	RECREATION	PARK AREAS	4,749.88
				TOTAL:	16,397.38
WORTHINGTON HOCKEY ASSOC	1/28/11	2011 ADVERTISING	ELECTRIC	ACCTS-INFO & INSTR ADV	500.00
				TOTAL:	500.00

===== FUND TOTALS =====

101	GENERAL FUND	56,687.46
202	COMMUNITY CTR/GRANTS	138.77
207	PD TASK FORCE	38,191.91
229	RECREATION	6,223.01
231	ECONOMIC DEV AUTHORITY	58.63
401	IMPROVEMENT CONST	10,762.27
427	BEDFORD TECHNOLOGY PROJ	25,215.00
432	EVENT CENTER/AUDITORIUM	3,066.00
601	WATER	3,123.18
602	MUNICIPAL WASTEWATER	17,654.80
604	ELECTRIC	21,321.88
609	LIQUOR	5,288.51
612	AIRPORT	86,441.81
614	MEMORIAL AUDITORIUM	55.57
702	DATA PROCESSING	243.96
703	SAFETY PROMO/LOSS CTRL	7,662.75
878	WASTE MANAGEMENT COLL	7,192.00
882	TOURISM PROMOTION	7,541.57

 GRAND TOTAL: 296,869.08
